

ORGANISATIONAL PURPOSE AND RESPONSIBILITIES

ACT AND BOARD OF TRUSTEES

The Queensland Art Gallery Board of Trustees is the governing body of the Queensland Art Gallery and draws its powers from the *Queensland Art Gallery Act 1987*. The Act provides that the Board is to consist of the number of members appointed by the Governor-in-Council. Trustees are appointed for a term of not more than five years, and are eligible for reappointment as Trustees at the expiration of their respective terms.

During the 2004–05 year, the Board met on eight occasions.

FUNCTIONS OF THE BOARD

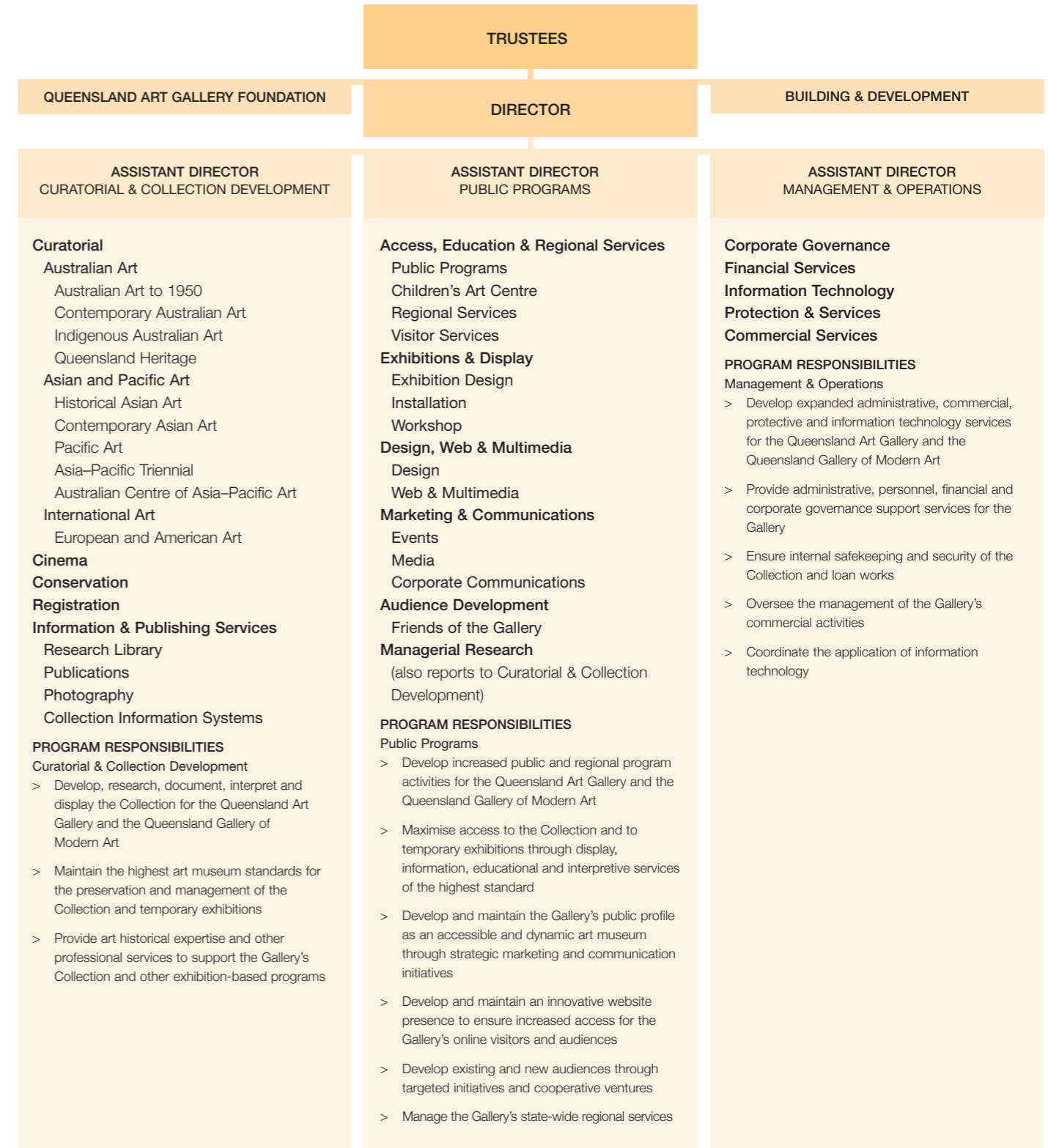
- (a) to control, manage and maintain the Art Gallery and each branch thereof and all property in the possession of the Board; and
- (b) to minister to the needs of the community in any or all branches of the visual arts by
 - (i) displaying works of art; and
 - (ii) promoting artistic taste and achievement through the illustration of the history and development of the visual arts; and
 - (iii) promoting and providing lectures, films, broadcasts, telecasts, publications and other educational or cultural instruction or material; and
 - (iv) promoting research; and
- (c) to control and manage all land and premises vested in or placed under the control of the Board; and
- (d) to restore and repair works of art in the possession of the Board; and
- (e) to frame and package, and manufacture display materials for, works of art in the possession of the Board; and
- (f) to encourage artistic achievements by artists resident in Queensland; and
- (g) to perform the functions given to the Board under another Act; and
- (h) to perform functions that are incidental, complementary or helpful to, or likely to enhance the effective and efficient performance of, the functions mentioned in paragraphs (a) to (g); and
- (i) to perform functions of the type to which paragraph (h) applies and which are given to the Board in writing by the Minister.

MINISTERIAL DIRECTIONS

The Minister for the Arts gave no directions to the Board of Trustees during the year.

POWERS OF THE BOARD

- (1) For performing its functions, the Board has all the powers of an individual and may, for example:
 - (a) enter into arrangements, agreements, contracts and deeds; and
 - (b) acquire, hold, deal with and dispose of property; and
 - (c) engage consultants; and
 - (d) appoint agents and attorneys; and
 - (e) charge, and fix terms, for goods, services, facilities and information supplied by it; and
 - (f) do anything else necessary or desirable to be done in performing its functions.
- (2) Without limiting subsection (1), the Board has the powers given to it under this or another Act.
- (3) The Board may exercise its powers inside and outside Queensland, including outside Australia.
- (4) In this section — ‘power’ includes legal capacity.



VISION

Increased quality of life for all Queenslanders through enhanced access, understanding and enjoyment of the visual arts and furtherance of Queensland's reputation as a culturally dynamic state.

MISSION

To be the focus for the visual arts in Queensland and a dynamic and accessible art museum of international standing.

Key Strategic Directions

- > Enhance the Gallery's profile through greater emphasis on its Collection, increased focus on children and youth programs, and tours of diverse exhibitions and education programs to regional Queensland centres.
- > Maintain focus on modern and contemporary Australian and international art, Indigenous Australian art and contemporary art of the Asia-Pacific region in the expansion to a two-site institution.

KEY PRIORITIES AND INITIATIVES

- > Continue to promote and present the Gallery as a centre of international standing specifically in the areas of visual arts practice and audience engagement with the visual arts.
- > Continue to develop exhibition, education and interpretive programs for people of all ages.
- > Attract new audiences through a range of innovative and diverse programs.
- > Improve access to the Collection and related visual arts information irrespective of where people live in Queensland.
- > Present a range of exhibitions drawn from the Collection.
- > Present a wide-ranging program of exhibitions from other national and international institutions.
- > Collect and exhibit Australian and international art including the art of Aboriginal and Torres Strait Islander peoples and the art of the Asia-Pacific region.
- > Continue and expand partnerships with Education Queensland and tertiary education providers to assist in the development and delivery of programs and services.
- > Focus on research, scholarship and publishing; creative partnerships and alliances; residencies, internships, grants and innovative professional practice.
- > Expand and strengthen important partnerships and alliances between the Gallery and key international museums and organisations, in relation to professional opportunities.

- > Maintain and enhance the Gallery's services to regional and remote Queensland through exhibitions, educational services, new technologies and professional development and consultancies.
- > Continue to develop and expand the support of the private sector for the Gallery's activities.
- > Maximise the Gallery's contribution to Government outcomes and priorities through appropriate planning and development of the Queensland Gallery of Modern Art and the refurbishment of the existing Gallery.

GOALS

The Gallery focused on the following goals to ensure its contribution to the attainment of the Government's policy priorities (see p.28). These goals will remain current for the Gallery's Strategic Plan covering the next five-year planning cycle, 2005-10:

- > Develop, manage and conserve the Collection to the highest art museum standards for the benefit and enjoyment of present and future users.
- > Display and promote the Collection and the Gallery's facilities, and provide access to exhibitions, educational services and interpretive programs of excellence to a diversity of cultures and publics with particular attention to the principles of lifelong learning.
- > Develop and manage an exhibitions program to the highest art museum standards, which extends to regional and remote Queensland, for the benefit and enjoyment of present and future audiences.
- > Continue to develop services provided to regional areas in order to support such communities in the development of their unique cultural assets and distinctive identities, while also benefiting from cultural exchange with such regions.
- > Ensure the Gallery's building and strategic development, including the Queensland Gallery of Modern Art Project, meet the needs of the community and the Gallery.
- > Provide assistance and encouragement to young emerging artists and professional development and employment opportunities for young persons seeking a career in the visual arts.
- > Continue to develop an organisational culture that articulates best practice throughout the Gallery's operations.
- > Develop, where appropriate, productive partnerships with other Government agencies and with the private, education and community sectors.
- > Provide museum professionals and Queensland Art Gallery staff with opportunities for professional development, so as to create a community of highly skilled and educated people.

OPERATIONAL PLAN

The Gallery's Operational Plan documents the major activities undertaken during the 12-month period from 1 July 2004 to 30 June 2005, and is underpinned by the Strategic Plan.

COLLECTION

The Gallery's Collection currently consists of 11 961 works of art. Works are acquired each year in accordance with the following priorities in the Collection Development Policy endorsed by Trustees:

- > Acquire works of art to build, refine and enhance the Collection.
- > Manage the display of the Collection to provide maximum access through permanent displays and regular rotations.
- > Implement a schedule of Collection-based displays and activities that reflects Collection strengths and developments, including tours throughout regional Queensland.
- > Maintain a strategic focus on works by Queensland-born or Queensland-based artists, and on art of relevance to Queensland's social and cultural diversity.
- > Pursue a leadership role in the acquisition of contemporary art of the Asia-Pacific region.
- > Provide and maintain complete and accurate information on the Collection and objects in the temporary custody of the Gallery.
- > Provide and maintain a level of physical safety for the Collection consistent with current international museum standards.
- > Establish and implement appropriate practices and standards for the conservation of the Collection.

INITIATIVES AND SERVICES

- > Continue to foster research into the Collection and communicate the results through interpretive programs for a diversity of audiences.
- > Continue to develop and implement integrated public education programs to support the Collection and exhibitions.
- > Investigate and implement enhanced public access to the Collection and the innovative delivery of education and information services to Queensland including the development and enhancement of the Gallery's website.
- > Organise and present exhibitions at the Queensland Art Gallery.
- > Develop, coordinate and tour exhibitions to regional Queensland.
- > Continue to advise and consult with the education sector in urban and regional Queensland.
- > Continue to develop a leading research facility to foster research into, and the development of, the Asia-Pacific collection and major exhibitions/projects.
- > Continue to provide consultancy services and professional support to local government-funded regional galleries.
- > Continue to provide professional development opportunities for arts workers in regional Queensland.
- > Continue to support Gallery touring exhibitions with a range of related education and information resources and programs.

EXHIBITIONS AND AUDIENCES

- > Organise and present exhibitions at the Queensland Art Gallery.
- > Develop, coordinate and tour exhibitions to regional Queensland.
- > Develop, coordinate and tour exhibitions that showcase the work of regional Queensland artists.
- > Continue to develop collaborative and consultative procedures for developing exhibitions and supporting programs to travel to regional Queensland.

QUEENSLAND GALLERY OF MODERN ART

- > Coordinate planning for developing the programming for the Queensland Gallery of Modern Art.
- > Develop community liaison activities addressing the Queensland Gallery of Modern Art.
- > Consult with regional Queensland communities and arts organisations throughout the development of the Queensland Gallery of Modern Art.
- > Continue the design and construction documentation for the Queensland Gallery of Modern Art.
- > Promote the Queensland Gallery of Modern Art as a key component of the Gallery's development strategy.

PROGRAMS OF ASSISTANCE

- > Conduct annual awarding of scholarships and bursaries.
- > Continue youth training and apprenticeship program.

ORGANISATIONAL CULTURE

- > Facilitate ongoing series of inter-section workshops to ensure collaborative interaction.
- > Undertake debriefings and evaluations and communicate outcomes to staff.
- > Identify and support training and professional development opportunities for staff.
- > Implement strategies contained in the Equal Employment Opportunity Plan.

MEETING THE GOVERNMENT'S POLICY PRIORITIES

Relationship between the Gallery's goals and outputs and the Government's policy priorities

The Queensland Art Gallery, together with the Queensland Gallery of Modern Art, deliver the output, 'Access to the Visual Arts (Queensland Art Gallery)', and contribute to the Government's priorities as indicated below.

GOVERNMENT PRIORITIES	QUEENSLAND ART GALLERY / QUEENSLAND GALLERY OF MODERN ART PRIORITY OUTPUTS
STRENGTHENING QUEENSLAND COMMUNITIES	
> Safe and secure communities.	> Continue to preserve, document and build the Gallery's Collection in order to promote enhanced understanding and recognition of Queensland's cultural heritage.
> Healthy, active individuals and communities.	
> A fair, socially cohesive and culturally vibrant society.	> Provide enhanced, accessible and innovative programs, products and services for all Queenslanders.
	> Promote reconciliation with Indigenous Queenslanders through programs, services and consultative processes.
	> Ensure the cultural maintenance of Indigenous art works and follow appropriate protocols for management and display.
	> Utilise partnerships and alliances to create professional and social development opportunities in regional Queensland.
	> Contribute to the liveability of cities, towns, regions and remote communities through the provision of greatly increased cultural products and services.
	> Provide enhanced programs, products and services that value and raise community appreciation of diversity through cultural knowledge and awareness.
BUILDING QUEENSLAND'S ECONOMY	
> A strong diversified economy.	> Develop education programs for children, youth, adults and mature adults with an emphasis on the principles of lifelong learning.
> A community of well-skilled and knowledgeable people.	> Develop a highly skilled, adaptable workforce, with an emphasis on providing opportunities for artists, scholars, educators, curators and young museum professionals.
> Improved standard of living for all Queenslanders.	> Utilise digital and other innovative technologies to improve knowledge of, and access to, the Gallery's Collection and to Gallery programs and services.
	> Provide opportunities for skills enhancement and professional development to colleagues in regional Queensland.
	> Create an expanded, sustained workforce to meet the product and service delivery needs of the new 'two-site, one-vision' institution.
	> Attract local, national and international visitors to Brisbane and regional centres, thus adding value to them as destinations.
	> Provide educational, cultural and knowledge products and services to the people of Queensland.

OUTPUT / PERFORMANCE STATEMENT 2004-05

MEASURES	PUBLISHED TARGETS (as per MPS*)	ACTUAL ACHIEVEMENT to 30 June 2005
QUANTITY		
Number of exhibitions presented	14	17
Number of Collection-based exhibitions presented	8	8
Number of exhibitions touring regional Queensland	3	3
Total attendance at Queensland Art Gallery	320 000	350 765
Number of internships/traineeships	4	4
QUALITY		
Level of satisfaction of audiences with Collection-based displays, programs and activities	90%	90%
Increase in loan requests and requests for reproductions from the Collection from external agencies	10%	0%
Collection stored safely and securely to international museum standards	100%	93%
Extent of client satisfaction with exhibition program	90%	93%
Number of trainees/apprentices completing traineeships	100%	100%
LOCATION		
Travelling exhibitions through regional Queensland	3	3
Number of regional locations receiving travelling exhibitions and education, interpretive and information services	15	33
*Ministerial Portfolio Statement		

COLLECTION ACQUISITIONS

DONORS

Donations and Gifts through the Queensland Art Gallery Foundation

Andrew Baker Art Dealer
Anonymous donors
Mrs Arijia Austin
Marion Borgelt
Corrs Chambers Westgarth
Estate of Jessica Ellis
James and Jessica Ellis
Julie Ewington
Jan and Spencer Grammer
Estate of Lawrence King
Geoff Kleem
Lee Ufan
Macquarie Bank Foundation
Margaret Olley Art Trust
Garry Menzies
Don and Alison Mitchell
Dr Cathryn J. Mittelheuser, AM
Margaret Mittelheuser, AM
Daphne Morgan
William A. Park, CBE, AM, and Lesley H. Park
Mike Parr
The Queensland Art Gallery Foundation
Fairweather Art Appeal
Stephen Tonge
Phyllis Whiteman and Josephine Whiteman
Ken Woolley, AM
Judith Wright

CULTURAL GIFTS PROGRAM

Mrs Arijia Austin
Marion Borgelt
Laima Jomantas
Geoff Kleem
Garry Menzies
Don and Alison Mitchell
Daphne Morgan
William A. Park, CBE, AM, and Lesley H. Park
Mike Parr
Stephen Tonge
Phyllis Whiteman and Josephine Whiteman
Judith Wright

PURCHASED THROUGH BEQUESTS AND FUNDS

John Darnell Bequest
The Queensland Government's Queensland Gallery of Modern Art Acquisitions Fund
The Queensland Government's special Centenary Fund

COMMISSIONS

Queensland Government

GIFTS, BEQUESTS, PURCHASES

AH KEE, Vernon
Australia b.1967
(Kuku Yalanji/Waanyi/Yidinji/Guugu Yimithirr language groups)
This man is . . . this woman is . . . 2003
Inkjet on polypropylene, satin laminated
24 panels: 29.5 x 21 x 0.5cm (each)
Acc. 2005.191.001–024
Commissioned 2005. John Darnell Bequest

AH XIAN
China/Australia b.1960
China China – bust no.63 2002
Porcelain with stained colour relief landscape design
38.5 x 38.7 x 22cm
Acc. 2004.258
Purchased 2004. The Queensland Government's Queensland Gallery of Modern Art Acquisitions Fund

ALI, Khadim
Pakistan b.1978
Untitled (from 'Jashn-e-Gulle-e-surkh' (Celebration of red tulips) series) 2004–05
Gouache on wasli paper
Six sheets: 15.3 x 20.7cm (comp.); 19 x 24.3cm (comp.); 28.7 x 19cm (comp.); 15.3 x 20.7cm (comp.); 19 x 26.5cm (comp.); 14.8 x 20.2cm (comp.)
Purchased 2005

AMARU, Aline
Tahiti b.1941
La Famille Pomare (tifaifai) (Pa'oti style) 1991
Commercial cotton cloth and thread in appliqué and embroidered technique
231 x 238cm
Acc. 2004.314
Purchased 2004. Queensland Art Gallery Foundation Grant

ANDREW, Tawan
Papua New Guinea b.1984
Bilum (bag) 2004
Looped handmade string with quail feathers
64 x 19cm (diam.)
Acc. 2004.218
Purchased 2004. The Queensland Government's Queensland Gallery of Modern Art Acquisitions Fund

ANNING, Michael Boiyool
Australia b.1955
(Yidinji language group)
Bama (The people)
Bark canoes
Cockatoo pairs
Fruit bats (heading out)
Kangaroo trail (between the hills)
Osprey (rising up)
Skipping mullet
Waves (water)
Boomerangs
Coolamons
2003
Natural pigments on softwood (*Alstonia scholaris* or *Argyrodendron perlatum*)
10 shields: 101 x 41 x 9.5cm (irreg., each, approx.)
Acc. 2004.162–171
Purchased 2004. The Queensland Government's special Centenary Fund

BALDESSARI, John
United States b.1931
I am making art 1971
Digital Betacam (PAL): 18:40 minutes, black and white, sound, ed. unlimited

John Baldessari sings Sol LeWitt 1972
Digital Betacam (PAL): 15 minutes, black and white, sound, ed. unlimited
Acc. 2005.206–207
Purchased 2005

BAYPUNGALA, Judy
Australia b.1941
(Wurlaki language group)
Nganiyal (woven conical form) 2002
Twined pandanus palm leaf (*Pandanus spiralis*) with natural dyes
64 x 130cm (irreg.)
Acc. 2004.205
Purchased 2004. Queensland Art Gallery Foundation

Mat 2004
Twined pandanus palm leaf (*Pandanus spiralis*) with natural dyes
307cm (diam., including fringe, irreg.)
Acc. 2005.062
Purchased 2005. Queensland Art Gallery Foundation Grant

BENNETT, Gordon
Australia b.1955
Scale from the stick #1–4 2003
Synthetic polymer paint on BFK Rives paper
Four sheets: 80 x 121.5cm (each)
Acc. 2004.153a–d
Purchased 2004. Queensland Art Gallery Foundation

top:
Ah Xian
China/Australia b.1960
China China – bust no.63 2002
Porcelain with stained colour relief landscape design
38.5 x 38.7 x 22cm
Purchased 2004. The Queensland Government's Queensland Gallery of Modern Art Acquisitions Fund

Judy Baypungala
Australia b.1941
(Wurlaki language group)
Mat 2004
Twined pandanus palm leaf (*Pandanus spiralis*) with natural dyes
307cm (diam., including fringe, irreg.)
Purchased 2005. Queensland Art Gallery Foundation Grant
© Judy Baypungala, 2004. Licensed by VISCOPY, Sydney, 2005



BENNETT, Gordon

Australia b.1955
Self portrait #1–8, #11, #14, #17, #23, #36, #37, #38 and #42 (from 'Self portraits' series) 2004
UV inkjet prints on photographic paper
16 sheets: 72.5 x 61cm (each); comp. sizes ranging from 51 x 51cm to 63 x 51cm, A.P.
Acc. 2005.172–187
Purchased 2005. The Queensland Government's special Centenary Fund

BLYFIELD, Julie

Australia b.1957
Pod 2003
Oxidised copper, hand-raised, chased
13.7 x 4.3cm (diam., irreg.)

Pod 2003
Fine silver, hand-raised, chased
8.8 x 12.1cm (diam., irreg.)

Sliced pod 2003
Sterling silver
8.5 x 10.2 x 1.5cm
Acc. 2004.154–155 & 157
Purchased 2004 with funds from the Estate of Jessica Ellis through the Queensland Art Gallery Foundation

Pod 2004
Fine silver, hand-raised, chased
7 x 8cm (diam., irreg.)
Acc. 2004.156
Commissioned 2004 with funds from the Estate of Jessica Ellis through the Queensland Art Gallery Foundation

BODE, Edwin

Australia 1859–1926
Coomera River 1899
Watercolour
42 x 57.5cm
Acc. 2005.164
Purchased 2005. John Darnell Bequest

BORGELT, Marion

Australia b.1954
Bloodlight stack (nos 1, 3, 4, 5, 7, 8, 9, 10, 11 and 14) 2001–02
Paper, synthetic polymer paint, pigment, perspex, wood, screws
10 pieces ranging from 21.5 x 15.5 x 10cm to 64 x 15 x 5.7cm
Acc. 2005.135–144
Gift of the artist through the Queensland Art Gallery Foundation 2005

BROWNHALL, Robert

Australia b.1968
Afternoon storm, Brisbane 2005
Oil on canvas
Diptych: 122 x 330cm (overall)
Acc. 2005.002a–b
Commissioned 2005 with funds from the Queensland Government

BURARN.GARRA, Bonny

Australia b.1959
(Burarra language group)
Mat 2004
Twined pandanus palm leaf (*Pandanus spiralis*), feathers with natural dyes
263cm (diam., including fringe)
Acc. 2005.041
Purchased 2004. The Queensland Government's special Centenary Fund

BUSTARD, William

England/Australia 1894–1973
(Darling Downs landscape) c.1930s
Watercolour over pencil
24.5 x 35cm (sight)

(Farm landscape) c.1930s
Watercolour over pencil
25.3 x 36.5cm (sight)
Acc. 2004.236–237
Purchased 2004. Queensland Art Gallery Foundation Grant

CAMPBELL, John

Australia 1855–1924
Sidney House 1890
Watercolour
39 x 63cm
Acc. 2005.046
Purchased 2004 with funds derived from the Maria Therese Treweeke gift

CARCHESIO, Eugene

Australia b.1960
Test pattern for hope 2001
Paper cones on paper
180 x 225cm (sight)
Acc. 2005.146
Purchased 2005. Queensland Art Gallery Foundation

CARLOS, Juanita

Republic of Palau b.1952
Lei 2004
Crochet wool, aluminium ring-pulls
36.5 (long) x 5cm (diam.)

Lei 2004
Crochet wool, aluminium ring-pulls
47 (long) x 4cm (diam.)

Lei 2004
Crochet wool, aluminium ring-pulls
36.5 (long) x 5cm (diam.)

Lei 2004
Coconut fibre, commercial dyes, plastic, string
47.5 (long) x 6cm (diam.)

Lei 2004
Coconut fibre, plastic
54.5 (long) x 6cm (diam.)
Acc. 2004.211–215
Purchased 2004. The Queensland Government's Queensland Gallery of Modern Art Acquisitions Fund

CHINA

Ewer c.17–18th century
White porcelain with cobalt oxide underglaze in the form of two mandarin ducks with foliage and water patterns
16 x 18 x 12cm

Bowl c.19th century
White porcelain with cobalt oxide underglaze with couples on the exterior, children on the interior and plum blossoms around rim
7.5 x 16cm (diam.)

Censer c.19th century
White porcelain with cobalt oxide underglaze with scholar and two attendants
11 x 13cm (diam.)

Jar c. early 19th century
White porcelain with cobalt oxide underglaze with landscape; wooden lid
27.5 x 23cm (diam., overall)

Pair of brush pots c.20th century
White porcelain with cobalt oxide underglaze dragon and cloud design
14 x 10cm (diam., each)

Bottle c.20th century
Stoneware bottle with lotus bud mouth; celadon glaze
28 x 13cm (diam.)
Acc. 2005.154–159
Gift of Mrs Arija Austin in memory of her husband Mr Richard Wigram Locke Austin, AO, OBE, The Order of the Rising Sun Gold Rays with neck Ribbons [Japan] through the Queensland Art Gallery Foundation 2005

COLE, Duncan (photographer)

New Zealand b.1969
KIHARA, Shigeyuki (concept developer)
Samoa b.1975

The high chief and his subjects
Daughter of the high chief
Tama and his vahine
Three sisters (from 'Savage nobility' series) 2001, printed 2004
Gelatin silver photographs, ed. 1/2
Four sheets: 59.3 x 46.7cm (comp., each, approx.)
Acc. 2004.315–318
Purchased 2004. Queensland Art Gallery Foundation Grant

COLQUHOUN, Brett

Australia b.1958
Tarmac 2 2004
Synthetic polymer paint on canvas
152 x 183cm
Acc. 2005.147
Purchased 2005. Queensland Art Gallery Foundation

COTTON, Olive

Australia 1911–2003
Plum blossom 1937 (inscr. 1935)
Gelatin silver photograph
32.5 x 23.6cm (comp.)
Acc. 2005.001
Purchased 2005. Queensland Art Gallery Foundation Grant

Flight 1982, printed 1986
Gelatin silver photograph, ed. 3/25
38.6 x 30.6cm (comp., sight)
Acc. 2005.012
Gift of Daphne Morgan through the Queensland Art Gallery Foundation 2005

DANGAR, Anne Garvin

Australia/France 1885–1951
(Platter with Celtic tracery and stylised zoomorphic figures representing the four apocalyptic beasts) c.1948
Wheelthrown terracotta clay with green, cream and brown–black glazes, incised
3 x 44.3cm (diam.)

(Large four-handled urn with lid, with geometric decoration) c.1948
Wheelthrown earthenware, four-handled form with brown–black glaze and abstract calligraphic motifs in cream and green
40 x 32.5cm (diam., complete)
Acc. 2004.207–208
Purchased 2004. Queensland Art Gallery Foundation

de MEDICI, eX

Australia b.1959
Skull (blue and green) 2004
Watercolour
57.5 x 55cm (comp., sight)
Acc. 2004.300
Purchased 2004. Queensland Art Gallery Foundation Grant

de MOMPIER, Circle of Joos (artist)

The Netherlands 1564–1635
Monogrammist IC (currently unidentified) (painter of staffage)
Jesus healing the blind c.1600–20
Oil on timber panel
40 x 69.5cm
Acc. 2004.288
Purchased 2004 with funds from anonymous donors through the Queensland Art Gallery Foundation

de SILVA, Kahikina

Hawaii b.1977
Lei 2004
Twined cotton thread with commercial dyes, goose feathers, wool and ribbon
66.5 (long) x 5.5cm (diam.)
Acc. 2004.223
Purchased 2004. The Queensland Government's Queensland Gallery of Modern Art Acquisitions Fund

DEACON, Destiny

Australia b.1957
(Kuku and Erub/Mer language groups)
Forced into images (portfolio) 2001
Bubble jet print from polaroid photographs, ed. 12/20
4 sheets: 77.3 x 95.3cm (comp., each, approx.); 6 sheets: 95.3 x 77.1cm (comp., each, approx.)
Acc. 2004.172a–j

DEACON, Destiny (artist)

Australia b.1957
(Kuku and Erub/Mer language groups)
FRASER, Virginia (collaborating artist)
Australia
Forced into images 2001
DVD and Betacam SP formats: 9 minutes, colour, silent, ed. 2/20
Acc. 2004.173
Purchased 2004. Queensland Art Gallery Foundation

DJUTTARA, Elizabeth

Australia b.1942
(Ganalbingu language group)
Wanydjajipi (Yam sculpture) 2004
Bark fibre string, paperbark
65 x 190cm (installed, approx.)
Acc. 2005.061
Purchased 2005. Queensland Art Gallery Foundation Grant

DR WALL (WORCESTER)

England 1751–83
Leaf dish: (fancy birds) c.1770–83
Porcelain, soft-paste press moulded, with birds and butterflies in polychrome colours over blue glaze. Gilt details
12 x 32 x 24.5cm

Coffee pot: (famille rose) c.1770–72
Porcelain, soft-paste, baluster shape with overglaze colours in famille rose palette over light blue glaze. Gilt dentil rim
24 x 16 x 13cm (complete)
Acc. 2004.202–203

Reeded coffee pot c.1758–60
Hard-paste porcelain slip cast with reeded exterior and hand-painted details in underglaze cobalt blue
23.5 x 18.2 x 11cm (complete)
Acc. 2004.241a–b
Gift of the Estate of James and Jessica Ellis in memory of Tory and Beatrice Cossart, Boonah, through the Queensland Art Gallery Foundation 2004

ENRIGHT, Malcolm

Australia b.1949
2441 pics Volume 1-2-3 / 10-8-2001 2001
CD (Mac OS and PC (hybrid) compatible), ed. master copy

Horizontal domain 1: 24 meditations on life (spent horizontal) 2000
Printed, bound booklet of 12 leaves, ed. 18/30
10.5 x 14.5 x 0.3cm

Horizontal domain 2: 24 meditations on (+ life) 2000
Printed, bound booklet of 12 leaves, ed. 18/30
10.5 x 14.5 x 0.3cm
Acc. 2005.043–045
Purchased 2005. Queensland Art Gallery Foundation Grant

ESCOTT, Melville

Australia b.1947
(Gangalidda language group)
Leg and arm design 2005
Synthetic polymer paint on canvas
137 x 53cm
Purchased 2005

ESELI, James

Australia b.1929
(Kala lagaw ya language group)
Ubirikubiri (Crocodile) headdress 2004
Synthetic polymer paint on wood, feathers, plastic, raffia, copper wire
17 components: 80 x 55 x 177cm (complete)
Acc. 2005.063a–q
Purchased 2005. Queensland Art Gallery Foundation Grant

FAIRWEATHER, Ian

Scotland/Australia 1891–1974
Café tables 1957
Gouache, watercolour and synthetic polymer paint on cardboard adhered to composition board
53.2 x 37.8cm (irreg.)
Acc. 2004.238
Purchased 2004 with funds from The Queensland Art Gallery Foundation
Fairweather Art Appeal, Jan and Spencer Grammer and the Queensland Art Gallery Foundation Grant

clockwise from left:

Anne Dangar
Australia/France 1885–1951
Platter with Celtic tracery and stylised zoomorphic figures representing the four apocalyptic beasts c.1948
Wheelthrown terracotta clay with green, cream and brown-black glazes, incised
3 x 44.3cm (diam.)
Purchased 2004. Queensland Art Gallery Foundation

Julie Blyfield
Australia b.1957
Sliced pod and Pods 2003–04
Sterling silver, oxidised copper, fine silver, hand-raised, chased
Dimensions variable
Purchased and commissioned 2004 with funds from the Estate of Jessica Ellis through the Queensland Art Gallery Foundation

Dr Wall (Worcester)
England 1751–83
Coffee pot: (famille rose) c.1770–72
Porcelain, soft-paste, baluster shape with overglaze colours in famille rose palette over light blue glaze. Gilt dentil rim
24 x 16 x 13cm (complete)
Gift of the Estate of James and Jessica Ellis in memory of Tory and Beatrice Cossart, Boonah, through the Queensland Art Gallery Foundation 2004



FAVRE, Jean-François
France b.1940
Dynastie des Pomare (from 'Legendes Polynesiennes' series) 1991
Linocut on wood veneer
29.2 x 50.3cm
Acc. 2005.162
Purchased 2005. Queensland Art Gallery Foundation

FLETCHER, Marjorie
Australia 1912–88
Self-torso 1934, cast 1992
Bronze, ed. 2/12
52.5 x 22 x 19.8cm (irreg.)
Acc. 2005.011
Gift of Don and Alison Mitchell through the Queensland Art Gallery Foundation 2005

FRASER, Andrea
United States b.1965
Little Frank and his carp 2001
Digital Betacam and DVD formats (transferred from Mini DV): 6 minutes, colour, sound, ed. 11/25
Acc. 2005.060
Purchased 2004

FROESE, Joachim
Australia b.1963
Rhopography #24 (figs) 2002–03
Silver gelatin prints
Three sheets: 36.2 x 29cm (overall comp.), ed. 3/6

Rhopography #39 (fish) 2002–03
Silver gelatin prints
Three sheets: 36.1 x 89.4 (overall comp.), ed. 3/6

Rhopography #42 (paw paw) 2002–03
Silver gelatin prints
Four sheets: 36.1 x 117cm (overall comp.), ed. 4/6
Acc. 2005.188–190
Purchased 2005. Queensland Art Gallery Foundation

GADJARWALA, Michael
Australia b.1948
(Wurlaki language group)
Gom.guborkbork (Mud mussels) 2003
Natural pigments on bark
201 x 81cm
Acc. 2004.174
Purchased 2004 with funds from Corrs Chambers Westgarth through the Queensland Art Gallery Foundation

GALNARDIWUY, Richard
Australia b.1940
(Dhamarrandji language group)
Banumbirr (Morning Star pole) 2003
Wood, feathers, bark fibre string, beeswax with synthetic polymer paint
205.5 x 21cm (diam.)

Banumbirr (Morning Star pole) 2003
Wood, feathers, bark fibre string, beeswax with synthetic polymer paint
203.5 x 12cm (diam.)
Acc. 2005.030–031
Purchased 2004

GANAMBARR, Mavis Warrngiina
Australia b.1966
(Dativuy language group)
Conical basket 2002
Coil-woven pandanus palm leaf (*Pandanus spiralis*), natural dyes and natural pigments with bark string
24.5 x 16cm (irreg.)
Acc. 2004.210
Purchased 2004. Queensland Art Gallery Foundation

GARRIMARRA, Sally
Australia b.1967
(Ganalbingu language group)
Fish trap 2004
Twined pandanus palm leaf (*Pandanus spiralis*) with natural dyes
93 x 32cm (irreg.)

Fish trap 2004
Twined pandanus palm leaf (*Pandanus spiralis*) with natural dyes
113 x 41cm (irreg.)
Acc. 2004.206–207
Purchased 2004. Queensland Art Gallery Foundation

GILBERT, Linda
Australia b.1975
(Merramaninjei language group)
Grass skirt design 2002
Synthetic polymer paint on canvas
166 x 123cm
Acc. 2005.032
Purchased 2004. The Queensland Government's special Centenary Fund

GILES, Naraby
Australia b.(c.)1944
(Ngaanyatjarra language group)
Basket with manguri (circular hair ring) 2004
Coil-woven desert grass (*tjanpi*), with synthetic raffia and dyed and natural raffia; desert grass (*tjanpi*) bound with natural raffia
43 x 39.5cm (diam., complete)
Acc. 2004.301a–b
Purchased 2004

GITJPULU, Julie-Anne
Australia b.1979
(Ganalbingu language group)
Triangular basket 2004
Coil-woven pandanus palm leaf (*Pandanus spiralis*), natural dyes with bark string
30 x 52 x 14cm (excluding handle)

Triangular basket 2004
Coil-woven pandanus palm leaf (*Pandanus spiralis*), natural dyes with bark string
25 x 54.5 x 14cm (excluding handle)
Acc. 2004.208–209
Purchased 2004. Queensland Art Gallery Foundation

GRIFFIN, Murray
Australia 1903–92
The wave 1934
Colour linocut, ed. 4/14
27.6 x 35cm (comp.)
Acc. 2004.239
Purchased 2004. Queensland Art Gallery Foundation

GRIFFITHS, Alan
Australia b.1941
(Ngarinyman/Ngaliwurri language groups)
Balmoorra 1
Balmoorra 2
Balmoorra 3
Balmoorra, Bullo River
Balmoorra, small boat
Balmoorra, large boat
Balmoorra, Morning Star
Balmoorra, Seven Sisters
Balmoorra, untitled
Balmoorra, hand held
Balmoorra, hand held
Balmoorra, hand held
Balmoorra, hand held
Balmoorra, hand held
Balmoorra, hand held
2002

Wool and wood
16 pieces: 255.5 x 82.5 x 5cm; 290 x 91 x 12cm; 261 x 76 x 10cm; 337.5 x 92.5 x 8cm; 49 x 166 x 4cm; 54 x 182 x 5.5cm; 284 x 80 x 14.5cm; 346 x 103 x 12cm; 278 x 83.5 x 5cm; 68 x 21 x 3.2cm; 70.5 x 27.7 x 3.3cm; 89 x 25 x 3.8cm; 83 x 22 x 3.5cm; 79 x 25.5 x 4cm; 82 x 27 x 4.2cm; 81 x 24 x 3.5cm
Acc. 2005.023.001–016
Purchased 2005. Queensland Art Gallery Foundation

GURRUWIWI, Gali
Australia b.1942
(Galpu language group)
Banumbirr (Morning Star poles) 2003
Wood, feathers, bark string, beeswax with natural pigments
Two poles: 186 x 30cm (diam.) (each)

Banumbirr (Morning Star poles) 2003
Wood, feathers, cotton thread with natural pigments
Three poles: 199 x 17cm (diam.) (each, approx.)
Acc. 2004.227–231
Purchased 2004. Queensland Art Gallery Foundation

GURRUWIWI, Gali

Australia b.1942
(Galpu language group)
Banumbirr (Morning Star poles) 2003
Wood, feathers, bark fibre string, beeswax with synthetic polymer paint
Five poles: 184.5 x 14cm (diam.); 142 x 16cm (diam.); 207.5 x 17.5cm (diam.); 184 x 12cm (diam.); 207 x 17cm (diam.)
Acc. 2005.024–028
Purchased 2004

GURRUWIWI, Paul

Australia b.1975
(Galpu language group)
Banumbirr (Morning Star pole) 2003
Wood, feathers, bark fibre string, beeswax with synthetic polymer paint
173 x 20cm (diam.)
Acc. 2005.029
Purchased 2004

GURRUWIWI, Trevor

Australia b.1973
(Galpu language group)
Banumbirr (Morning Star poles) 2003
Wood, feathers, bark string, cotton thread with natural pigments
Three poles: 171 x 11cm (diam.); 157.5 x 15cm (diam.); 149.5 x 8cm (diam.)
Acc. 2004.232–234
Purchased 2004. Queensland Art Gallery Foundation

HAMILTON, Richard

England b.1922
Carapace 1954
Oil on canvas
41 x 76.5cm
Acc. 2004.299
Gift of Phyllis Whiteman and Josephine Whiteman through the Queensland Art Gallery Foundation 2004

HAWKINS, Weaver

England/Australia 1893–1977
The round table 1940
Oil on canvas
88.5 x 69.2cm (sight)
Acc. 2004.193
Gift of the Margaret Olley Art Trust through the Queensland Art Gallery Foundation 2004

HEMRY, Madison

Marshall Islands b.1964
Necktie 2004
Woven coconut fibre with plastic beads and cat's eye shells
42 x 8.5 x 0.5cm

Fan 2004

Woven coconut fibre and pandanus with cowry shells
40.5 x 29.5 x 1.5cm

Fan 2004

Woven coconut fibre, commercial dyes
42.5 x 33 x 2.7cm
Acc. 2004.224–226
Purchased 2004. The Queensland Government's Queensland Gallery of Modern Art Acquisitions Fund

HOEDEMAN, Co

The Netherlands/Canada b.1940
Le château de sable (The sand castle) 1977
16mm and Digital Betacam formats: 13:12 minutes, colour, sound

Le trésor des Grotocéans (The treasure of the Grotoceans) 1980

16mm and Digital Betacam formats: 15:32 minutes, colour, sound

Le jardin d'Écos (The garden of Ecos) 1997

35mm and Digital Betacam formats: 10:45 minutes, colour, sound
Purchased 2004. The Queensland Government's Queensland Gallery of Modern Art Acquisitions Fund

HUDSON, Noreen Ngala (potter)

Australia b.1947
(Arremte language group)
HERMANNsburg POTTERS (pottery workshop)
Australia est. 1990
Eeritja (Eagles) 1997
Earthenware, hand-built terracotta with underglaze colours and applied decoration
41.5 x 38cm (diam., complete)

Lorikeets 1996

Earthenware, hand-built terracotta with underglaze colours and applied decoration
28 x 33cm (diam., complete)
Acc. 2005.014–015
Gift of Daphne Morgan through the Queensland Art Gallery Foundation 2005

INKAMALA, Judith (potter)

Australia b.1948
(Arremte (Aranda) language group)
HERMANNsburg POTTERS (pottery workshop)
Australia est. 1990
Kangaroo 1996
Earthenware, hand-built terracotta with underglaze colours and applied decoration
29 x 19cm (diam., complete)
Acc. 2005.016a–b
Gift of Daphne Morgan through the Queensland Art Gallery Foundation 2005

JACKSON, Nancy

Australia b.(c.)1954
(Pitjantjara language group)
Basket 2004
Coil-woven desert grass (*tjanpi*), with synthetic raffia and dyed and natural raffia
19 x 39.6cm (diam.)

Basket 2004

Coil-woven desert grass (*tjanpi*), with synthetic raffia and dyed and natural raffia and emu feathers (*wipiya*)
23.5 x 45.5cm (diam.)
Acc. 2004.302–303
Purchased 2004

JACOBSEN, Arne (designer)

Denmark 1902–71
STELTON (manufacturer)
Denmark est. 1960
From 'Cylinda Line' series, designed 1964–67
Serving dish with strainer
Polished and brushed stainless steel
Two parts: 46.1 x 20.3 x 2.5cm (complete)

Small ice bucket (1 litre)

Brushed stainless steel
Two parts: 11 x 12 x 13cm (complete)

Ice bucket (2.5 litres)

Brushed stainless steel
Two parts: 15.1 x 19 x 20cm (complete)

Wine cooler

Brushed stainless steel
Two parts: 21.1 x 18 x 20.7cm (complete)

Mixer spoon

Polished stainless steel
25 x 4.5 x 3.8cm

Revolving ashtray (small)

Polished and brushed stainless steel
Two parts: 6.7 x 7.6 x 11.1cm (complete)

Revolving ashtray (large)

Polished and brushed stainless steel
Two parts: 8.1 x 10.6 x 15cm (complete)

Salt, pepper and mustard set

Brushed stainless steel, rubber stoppers
Five parts: 10.4 x 10.4 x 6.6cm (complete)

Tea pot (1.25 litres)

Brushed stainless steel with moulded plastic
12.6 x 11 x 23.8cm (complete)

Coffee pot (1.5 litres)

Brushed stainless steel with moulded plastic
20 x 10 x 23cm (complete)

Ice tongs

Polished stainless steel
17.5 x 4.6 x 1.3cm
Acc. 2005.064–074
Purchased 1982

JENNER, Isaac Walter

England/Australia 1836–1902
Brisbane River, view up the river opposite the Hamilton Hotel 1894
Oil on cardboard
12.8 x 20.2cm

Brisbane River, Bulimba Reach 1894

Oil on cardboard
12.8 x 20cm

Brisbane River, Garden Reach from near dry dock looking down river 1894

Oil on cardboard
12.8 x 20cm

Brisbane River, from North Quay looking towards Toowong 1894

Oil on cardboard
12.8 x 20.2cm
Acc. 2004.194.001–004
Gift from the Estate of Dr Elizabeth (Pat) Marks through the Queensland Art Gallery Foundation 2004

JIBAE, Emilyann

Marshall Islands b.1988
Arno bag 2004
Woven pandanus, hibiscus and coconut fibres
21 x 13 x 7cm

Arno bag 2004

Woven pandanus and coconut fibres
20 x 15 x 8.5cm
Acc. 2004.221–222
Purchased 2004. The Queensland Government's Queensland Gallery of Modern Art Acquisitions Fund

JIN-GUBARANGUNYJA, Lorna

Australia b.1952
(Burarra (Martay dialect) language group)
Fish trap 2003
Twined pandanus palm leaf (*Pandanus spiralis*) with natural dyes
125 x 65cm (diam.)
Acc. 2005.040
Purchased 2004. The Queensland Government's special Centenary Fund

JOMANTAS, Vincas

Lithuania/Australia 1922–2001
Beacon I 1985
Milled and carved wood, stained and waxed
157 x 60 x 36cm
Acc. 2005.013a–b
Gift of Laima Jomantas 2005

JULI, Mabel

(Gija language group)
Australia b.(c.)1933
Marranyji and Dinal 2004
Natural pigments on canvas
140 x 220cm
Acc. 2005.007
Purchased 2005 with funds from Dr Cathryn J. Mittelheuser, AM, through the Queensland Art Gallery Foundation

KOONS, Jeff

United States b.1955
Radial champs 2003
Inflatable plastic elements and wooden stool with perspex stand, ed. of 1000
Four components: 176 x 88 x 170cm (installed)
Acc. 2005.059a–e
Purchased 2004. The Queensland Government's special Centenary Fund

KOPPEL, Henning (designer)

Denmark 1918–81
GEORG JENSEN (manufacturer)
Denmark est. 1904
From 'New York' series, designed 1963
Dinner knife
Polished stainless steel
21 x 2.4 x 0.8cm

Dinner fork

19.1 x 2.4 x 2.2cm

Luncheon knife

19.7 x 2.1 x 0.9cm

Luncheon/salad fork

17.1 x 2.5 x 2.3cm

Pastry fork

15.4 x 2.3 x 1.1cm

Cold cut fork

17 x 2 x 1.1cm

Teaspoon

13.8 x 3.3 x 1.5cm

Coffee spoon

11.9 x 3 x 1cm

Dinner spoon

17.3 x 4.5 x 1.9cm

Serving spoon

23 x 6.2 x 3cm

Fish knife

18.7 x 2.8 x 0.5cm

Butter spreader

17 x 2.4 x 1cm

Sauce ladle

18.5 x 6.1 x 3.5cm
Acc. 2005.076–088
Purchased 1982

KORKATAIN, Duncan

Australia b.1949
(Wik–Alkan/Wik–Nathan language groups)
Crane with fish 2004
Natural pigments and synthetic polymer paint on wood
84.5 x 53 x 30cm
Acc. 2005.192
Purchased 2005

LAIFOO, Joey

Australia b.1978
(Kala Lagaw Ya language group)
Pearling days 2002
Colour linocut, ed. 19/35
54 x 43.2cm (comp.)
Acc. 2004.242
Purchased 2004. Queensland Art Gallery Foundation

LAING, Rosemary

Australia b.1959
Natural disasters: Departure of the Orient – Circular Quay (floods) (from 'Natural disasters' series) 1988
Photograph, steel, wood, gesso and synthetic polymer paint
56.5 x 259 x 3.5cm

from Paradise work (work #4) (from 'from Paradise work / 1990–1992' series) 1991
Laser-etched Diaglas, wood veneer
79.7 x 238 x 1cm

from Paradise work (work #5) (from 'from Paradise work / 1990–1992' series) 1991
Fujichrome, clear and tinted shinkolite
80 x 240 x 10cm

brownwork #3 1996
Computer-generated print on vinyl
298.5 x 298cm
Acc. 2004.196–199

Gift of Geoff Kleem through the Queensland Art Gallery Foundation 2004

LAKARRINY, David

Australia b.1957
(Galpu language group)
Banumbirr (Morning Star pole) 2003
Wood, feathers, bark string, cotton thread with natural pigments
226 x 20cm
Acc. 2004.235
Purchased 2004. Queensland Art Gallery Foundation

LEALOFI, Susana
 Wallis b.1946
Leis 2004
 Buao tree bark fibre, commercial dyes
 51 (long) x 5cm x 6cm (irreg.);
 48 (long) x 5 x 4.5cm (irreg.)
 Acc. 2004.216–217
 Purchased 2004. The Queensland
 Government's Queensland Gallery of Modern
 Art Acquisitions Fund

LEE Ufan
 South Korea/Japan b.1936
From line 1981
From line 1981
From line 1982
 Charcoal
 Three sheets: 56 x 75.7cm (each)
 Acc. 2004.259–261
 Purchased 2004. The Queensland
 Government's special Centenary Fund

In Milano 1–5 1992
 Lithographs with drypoint, ed. 15/50
 Three sheets: 152 x 89cm (comp., each,
 approx.); two sheets: 89 x 150cm (comp.,
 each)
 Acc. 2004.262.001–005
 Purchased 2004. The Queensland
 Government's Queensland Gallery of Modern
 Art Acquisitions Fund

Push up 1967
 Pencil on Japanese washi paper
 39.5 x 54.7cm

From point 1972
 Charcoal on Arches Aquarelle paper
 56.8 x 76cm

From line 1975
 Charcoal on Arches paper
 56.8 x 76cm
 Acc. 2004.296–298
 Gift of the artist through the Queensland Art
 Gallery Foundation 2004

LEMEKI, Tonga
 Tonga b.(c.)1979
Salu salu 2005
 Plaited pandanus and tufted commercial
 wools
 29.2 x 50.3cm
 Acc. 2005.161
 Purchased 2005. Queensland Art Gallery
 Foundation

MAGNUSSEN, Erik (designer)
 Denmark b.1940
STELTON (manufacturer)
 Denmark est. 1960
Vacuum jug (1 litre) (from 'Stelton classic'
 series) designed 1977
 Brushed stainless steel with moulded plastic,
 glass vacuum flask and rubber seal
 Two parts: 30.2 x 10.5 x 16.3cm (complete)
 Acc. 2005.075a–b
 Purchased 1982

MAIMA, Gau
 Papua New Guinea b.1959
Bilum (bag) 2004
 Looped handmade and commercial string
 with cassowary feathers
 84 x 64 x 7cm

Bilum (bag) 2004
 Looped handmade string with commercial
 dyes and rooster feathers
 68 x 45 x 5cm
 Acc. 2004.219–220
 Purchased 2004. The Queensland
 Government's Queensland Gallery of Modern
 Art Acquisitions Fund

MAIS, Hilarie
 England/United States/Australia b.1952
The Waiting 1984
 Oil paint on ply
 124 x 182 x 5cm
 Acc. 2005.003
 Purchased 2005 with funds from Macquarie
 Bank Foundation and with the assistance of
 Ken Woolley, AM, through the Queensland Art
 Gallery Foundation

MALGARRICH, Shirley
 Australia b.1947
 (Burrarra (Anbarra dialect) language group)
Jina-bakara (fish trap) 2004
 Twined pandanus palm leaf (*Pandanus
 spiralis*), natural dyes and bark string
 106 x 35cm (irreg.)
 Acc. 2004.246
 Purchased 2004. Queensland Art Gallery
 Foundation

Fish traps 2004
 Twined pandanus palm leaf (*Pandanus
 spiralis*) with natural dyes
 130 x 44cm (diam.); 144 x 36cm (diam.)
 Acc. 2005.037–038
 Purchased 2004. The Queensland
 Government's special Centenary Fund

MARIKA, Banduk
 Australia b.1954
 (Rirratjingu language group)
Banumbirr (Morning Star) (no. 1 from
 'Yalangbara' suite) 2000
 Linocut, A.P.
 26.6 x 20.6cm (comp.)
 Acc. 2004.200
 Gift of Julie Ewington through the Queensland
 Art Gallery Foundation 2004

*Djan'kawu (The Djan'kawu standing at his
 home Burralku)* (no. 2 from 'Yalangbara' suite)
 2000
 Linocut, ed. 18/30
 30.3 x 20.9cm (comp.)

*Bol'ngu (The Thunderman – bringer of storms
 during their journey)* (no. 4 from 'Yalangbara'
 suite) 2000
 Linocut, ed. 18/30
 30.8 x 21.9cm (comp.)

Milingurr (The sacred waterhole) (no. 6 from
 'Yalangbara' suite) 2000
 Linocut, ed. 18/30
 29.5 x 20.8cm (comp.)

*Guwuluru (The canoe in which the Djan'kawu
 set out on their journey)* (no. 3 from
 'Yalangbara' suite) 2000, printed 2004
 Linocut on Magnani Pescia 300gsm paper,
 A.P.
 30.8 x 20.8cm (comp.)

Guyamala (The naming of the fishes) (no. 5
 from 'Yalangbara' suite) 2000, printed 2004
 Linocut on Magnani Pescia 300gsm paper,
 A.P.
 20.6 x 28.9cm (comp.)
 Acc. 2004.248–252
 Purchased 2004. John Darnell Bequest

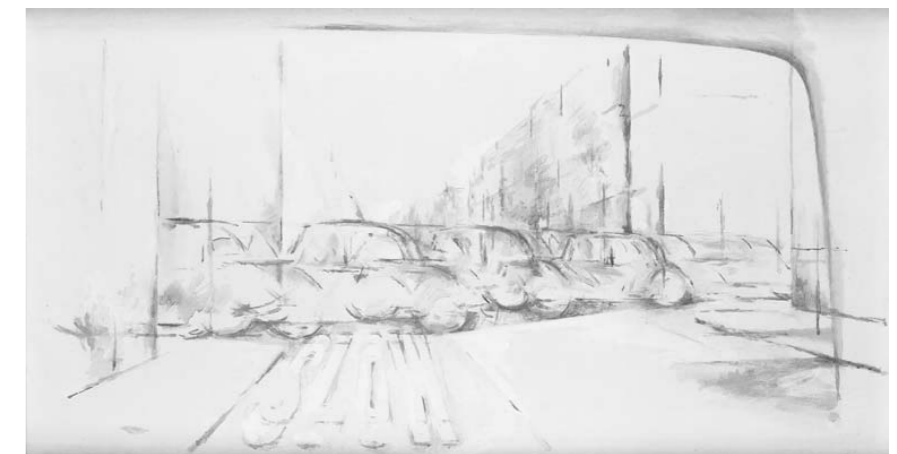
MELLOR, Danie
 Australia b.1971
 (Mamu/Ngadjonji language groups)
A captive audience 2005
 Pencil and crayon
 71 x 101cm

Whether you like it or not 2005
 Pencil
 71 x 101cm
 Acc. 2005.193–194
 Purchased 2005

clockwise from left:
 Weaver Hawkins
 England/Australia 1893–1977
The round table 1940
 Oil on canvas
 88.5 x 69.2cm (sight)
 Gift of the Margaret Olley Art Trust through the
 Queensland Art Gallery Foundation 2004

Hilarie Mais
 England/United States/Australia b.1952
The Waiting 1984
 Oil paint on ply
 124 x 182 x 5cm
 Purchased 2005 with funds from Macquarie Bank
 Foundation and with the assistance of Ken
 Woolley, AM, through the Queensland Art Gallery
 Foundation
 © Hilarie Mais, 1984. Licensed by VISCOPY, Sydney 2005

Richard Hamilton
 England b.1922
Carapace 1954
 Oil on canvas
 41 x 76.5cm
 Gift of Phyllis Whiteman and Josephine Whiteman
 through the Queensland Art Gallery Foundation
 2004
 © Richard Hamilton, 1954/DACS. Licensed by VISCOPY,
 Sydney 2005



MOHAMEDI, Nasreen

India 1937–90
Untitled c.1958–c.1981
Gelatin silver photographs, ed. 7/10
24 sheets: 27.4 x 38cm (comp.); 23.9 x 30.5cm (comp.); 24.4 x 38.4cm (comp.); 25 x 38.4cm (comp.); 24.9 x 38.5cm (comp.); 25.1 x 30.9cm (comp.); 20.9 x 38.3cm (comp.); 30.5 x 38.3cm (comp.); 25.2 x 38.2cm (comp.); 21.9 x 36.3cm (comp.); 20.8 x 38.2cm (comp.); 22.9 x 38.1cm (comp.); 23.9 x 30.4cm (comp.); 30.9 x 30.8cm (comp.); Triptych: left sheet: 29.5 x 37.1cm (comp.), centre sheet: 30.5 x 37.6cm (comp.), right sheet: 30.2 x 38cm (comp.); 27.3 x 36.3cm (comp.); 23.8 x 30.5cm (comp.); 23.6 x 30.2cm (comp.); 23.8 x 30.4cm (comp.); 30.8 x 30.4cm (comp.); 23.8 x 30.3cm (comp.); 23.9 x 30.3cm (comp.); 23.9 x 30.3cm (comp.); 23.9 x 30.3cm (comp.)
Acc. 2004.263–286
Purchased 2004. The Queensland Government's Queensland Gallery of Modern Art Acquisitions Fund

NALMAKARRA, Mary

Australia b.1942
(Burrarra (Gulala dialect) language group)
Fish trap 2004
Twined pandanus palm leaf (*Pandanus spiralis*) with natural dyes
97.5 x 29cm (diam.)
Acc. 2005.039
Purchased 2004. The Queensland Government's special Centenary Fund

NAMATJIRA, Gabriel

Australia 1941–69
(Arrente (Aranda) language group)
(*Family of gums, Central Australia*) c.1965–69
Watercolour
34.5 x 50cm (sight)
Acc. 2004.178
Gift of William A. Park, CBE, AM, and Lesley H. Park through the Queensland Art Gallery Foundation 2004

NAMPAJIMPA, Patsy Briscoe

Australia b.(c.)1945
(Arrente (Aranda) language group)
Women's night ceremony 1996
Earthenware, hand-built terracotta with underglaze colours
12 x 28.5cm (diam.)
Acc. 2005.017
Gift of Daphne Morgan through the Queensland Art Gallery Foundation 2005

NGALLAMETTA, Old Man

Australia 1945–2005
(Kugu Muminh/Kugu Uwanh language groups)
Thum-pup (fire-stick) 2004
Milkwood (*Alstonia muellerana*) with natural pigments, seeds, fibre and wax
142.5 x 8.5 x 7.5cm
Acc. 2004.201
Gift of Andrew Baker Art Dealer through the Queensland Art Gallery Foundation 2004

Kang'khan brothers 2004

Carved milkwood (*Alstonia muellerana*) with synthetic polymer paint, natural pigments, fibre, feathers and cotton thread
153 x 56 x 50cm; 153 x 39 x 38cm
Acc. 2004.253a–b
Purchased 2004. Queensland Art Gallery Foundation

Thap yongk (law pole) 2004

Natural pigments with PVC fixative on linen
61 x 91cm

Kang'khan brother: face 2004

Natural pigments with PVC fixative on linen
76 x 52cm

Pole design 2004

Natural pigments with PVC fixative on linen
40 x 60cm

Kang'khan brother: face and body painting 2004

Natural pigments with PVC fixative on linen
56 x 42cm
Acc. 2005.195–198
Purchased 2005. The Queensland Government's special Centenary Fund

NONA, Dennis

Australia b.1973
(Kala Lagaw Ya language group)
Sazi 2003
Drypoint, A.P.
49.2 x 29.3cm (comp., irreg.)
Acc. 2004.247
Purchased 2004. Queensland Art Gallery Foundation Grant

Sessere 2004

Hand-coloured linocut
112 x 200cm (comp), ed. 3/45
Acc. 2005.199
Purchased 2005

NORRIE, Susan

Australia b.1953
Enola 2004
Digital Betacam and DVD formats: 8:37 minutes, colour, sound, with 10 steel and ply stools, hand-painted, ed. 2/6
10 stools: 37.9 x 45 x 29.9cm (each)
Acc. 2004.186a–k
Purchased 2004 with funds from the Estate of Lawrence King in memory of the late Mr and Mrs SW King through the Queensland Art Gallery Foundation

NUPURRA, Henry Gambika

Australia b.1932
(Djambarrpuyngu language group)
Banumbirr (Morning Star poles) 2003
Wood, feathers, bark fibre string, beeswax with synthetic polymer paint
174.5 x 13.5cm (diam.); 218 x 16cm (diam.); 183 x 19.5cm (diam.)
Acc. 2005.033–035
Purchased 2004

ORSTO, Maria Josette

Australia b.1962
(Tiwi language group)
Jilamara and Kulama 1990
Synthetic polymer paint on canvas
90.5 x 133cm

Untitled 1990

Gouache
54 x 77.5cm (comp.)

Untitled 1990

Gouache
54 x 77.5cm (comp.)
Acc. 2005.018–020
Gift of Daphne Morgan through the Queensland Art Gallery Foundation 2005

PALMER, Ethleen

Australia 1908–65
Granite Peaks 1938
Colour linocut, A.P.
27.1 x 36.1cm (comp.)
Acc. 2004.304
Purchased 2004

PAREROULTJA, Otto

Australia 1914–73
(Arrente (Aranda) language group)
(*James Range country*) c.1965–70
Watercolour
53 x 73cm (sight)
Acc. 2004.179
Gift of William A. Park, CBE, AM, and Lesley H. Park through the Queensland Art Gallery Foundation 2004

PARR, Mike

Australia b.1945
Stepped wedge 1998
Beeswax and graphite cast on form ply
7 sections: 197 x 1684 x 76cm (overall)
Acc. 2005.145a–g
Gift of the artist through the Queensland Art Gallery Foundation 2005

POWELL, Geoffrey

Australia 1918–89
Untitled (Surrealist still life) 1937, printed 2005
Gelatin silver photograph
41 x 28.6cm

Untitled (portrait of Elaine Hamill) 1939,

printed 2005
Gelatin silver photograph
40.3 x 30.2cm

Untitled (construction of Story Bridge) 1939,

printed 2005
Gelatin silver photograph
22.4 x 33.5cm

Untitled (portrait of flat mate, Spring Hill)

1939, printed 2005
Gelatin silver photograph
22.5 x 34.5cm

Families awaiting eviction 1945, printed 2005

Gelatin silver photograph
34 x 33.5cm

Untitled (factory worker welding, Sydney)

1945, printed 2005
Gelatin silver photograph
35.3 x 37.5cm

Untitled (coal miner at home, Helensburgh)

1947, printed 2005
Gelatin silver photograph
33 x 33.5cm
Acc. 2005.165–171
Purchased 2005

RINYBUMA, Margaret

Australia b.1949
(Murrungun/Djinang language groups)
Mindirr (conical basket) 2004
Twined pandanus palm leaf (*Pandanus spiralis*), natural dyes and bark string
33 x 24cm
Acc. 2004.245
Purchased 2004. Queensland Art Gallery Foundation

ROBERTS, Luke

Australia b.1952
Christ + Kahlo 1989
From photographic performance series '1 + 1 = 8, Brisbane'; performers Luke Roberts and Joanna Meighan; camera Carl Warner
Inkjet print, ed. 1/5
100 x 100cm (comp.)
Acc. 2005.042
Purchased 2005. Queensland Art Gallery Foundation

RONTJI, Carol (potter)

Australia b.1972
(Arrente (Aranda) language group)
HERMANNsburg POTTERS (pottery workshop)
Australia est. 1990
Tompa (Perentie) 1997
Earthenware, hand-built terracotta with underglaze colours and applied decoration
31 x 25cm (diam., complete)
Acc. 2005.021a–b
Gift of Daphne Morgan through the Queensland Art Gallery Foundation 2005

ROSETZKY, David

Australia b.1970
Untouchable 2003
DVD (3 channels) and Digital Betacam formats: 18:38 minutes, colour, sound, ed. 2/3
100 x 515 x 230cm (installed, variable)

Weekender 2001

DVD and Digital Betacam formats: 16:37 minutes, colour, sound, ed. 5/6
Acc. 2005.004–005
Purchased 2005. The Queensland Government's Queensland Gallery of Modern Art Acquisitions Fund

ROUGHSEY, Joelene

Australia b.1980
(Lardil language group)
Headband 2005
Synthetic polymer paint on canvas
142 x 86cm
Purchased 2005

SEMU, Greg

New Zealand b.1971
Self portrait with pe'a (front view)
Self portrait with pe'a (back view)
Self portrait with pe'a (side view)
Self portrait with pe'a (crucified)
1995, printed 2004
Gelatin silver photographs, A.P.
One sheet: 59.8 x 49.8cm (comp.); three sheets: 59.2 x 49.2cm (comp., each)
Acc. 2004.289–292
Purchased 2004. Queensland Art Gallery Foundation Grant

STERBAK, Jana

Czech Republic/Canada b.1955
From here to there 2003
6-channel video installation on server: 12:30 minutes, colour, sound, ed. 1/4
280 x 1285 x 710cm (installed, approx.)
Acc. 2004.254
Purchased 2004. The Queensland Government's Queensland Gallery of Modern Art Acquisitions Fund

THAIDAY Sr, Ken

Australia b.1950
(Meriam Mir language group)
Frigatebird (Folded wings) 2004
Plywood, synthetic polymer paint, fishing line
71 x 91 x 51.5cm

Weres 2004

Bamboo and cotton cord
183 x 57.5cm (diam.)
Acc. 2004.182–183
Purchased 2004

Waumer (Frigatebird) 2004

Plywood, synthetic polymer paint, black bamboo, plastic, fishing line
150 x 200 x 240cm
Acc. 2004.184
Purchased 2004. Queensland Art Gallery Foundation Grant

TJAMPITJIN, Sunfly

(Kukatja language group)
Australia 1916–96
Poyarri 1988
Synthetic polymer paint on canvas
119.5 x 85cm
Acc. 2005.022
Gift of Daphne Morgan through the Queensland Art Gallery Foundation 2005

TSE, Sara

Hong Kong b.1974
Porcelain, fabric dipped in slip and fired
Trans/form no. 9.1 2003
Two components: 2.8 x 6.3 x 18.7cm; 3.3 x 6.2 x 18.5cm

Trans/form no. 10.2 2003

Two components: 3.7 x 6 x 21cm; 3.9 x 6.4 x 21cm

Dress no. 66 2003

4.7 x 20.7 x 24cm

Dress no. 68 2003

4.5 x 21 x 24.8cm

Dress no. 69 2003

3.7 x 17 x 22cm
Acc. 2004.309–313
Purchased 2004. Queensland Art Gallery Foundation Grant

clockwise from left:
 David Rosetzky
 Australia b.1970
Untouchable (still) 2003
 DVD: 18:38 minutes, colour, sound, ed. 2/3
 100 x 515 x 230cm (installed, variable)
 Purchased 2005. The Queensland Government's
 Queensland Gallery of Modern Art Acquisitions
 Fund

Greg Semu
 New Zealand b.1971
Self portrait with pe'a (back view)
 1995, printed 2004
 Gelatin silver photograph, A.P.
 59.2 x 49.2cm (comp.)
 Purchased 2004. Queensland Art Gallery
 Foundation Grant

Ronnie van Hout
 New Zealand b.1962
'after Peryer' (from an untitled portfolio) 1999,
 printed 2004
 Lambda print, ed. 7/20
 37.5 x 49.5cm (comp.)
 Purchased 2004



UNKNOWN
 Australia
(Brisbane panorama) 1910
 Gelatin silver photograph
 23.5 x 120.1cm (comp., sight)
 Acc. 2004.195
 Gift of Garry Menzies through the Queensland
 Art Gallery Foundation 2004

Bellenden-Ker blacks c.1890
 Albumen photograph
 17.8 x 22.3cm (comp., irreg.)

At Campoven Creek Cairns railway c.1885
 Albumen photograph
 17.4 x 22.6cm (comp., irreg.)

Stony Creek Falls c.1900
 Gelatin silver photograph
 22.8 x 17.5cm (comp., irreg.)

Barron Falls Cairns railway c.1900
 Gelatin silver photograph
 22.9 x 17.6cm (comp., irreg.)

(Pineapples) c.1890
 Albumen photograph
 17.1 x 22.9cm (comp., irreg.)

Paw paws c.1890
 Albumen photograph
 23.6 x 17.6cm (comp., irreg.)

Banana garden c.1890
 Albumen photograph
 17.7 x 22.6cm (comp., irreg.)

Coffee plantation c.1890
 Albumen photograph
 17.8 x 22cm (comp., irreg.)

(Sugar cane) c.1890
 Albumen photograph
 17.3 x 23cm (comp., irreg.)

Giant fig tree c.1890
 Albumen photograph
 22.9 x 17.9cm (comp., irreg.)

(Duck hunt) c.1905
 Gelatin silver photograph
 15.7 x 20.6cm (comp., irreg.)
 Acc. 2005.047-057
 Purchased 2005. The Queensland
 Government's special Centenary Fund

UNKNOWN
 England
Three piece garniture: (Billingsley roses)
 c.1810-20
 Bone china, slip cast and painted with classic
 ruins and flowers in polychrome overglaze
 colours and richly gilt
 Large urn: 18.7 x 11.7cm (diam.); small urns:
 15.2 x 9.5cm (diam.) (each)
 Acc. 2004.204a-c
 Gift of the Estate of James and Jessica Ellis in
 memory of Tory and Beatrice Cossart,
 Boonah, through the Queensland Art Gallery
 Foundation 2004

VAAGI, Sivaimauga
 Samoa b.1964
Fala su'i 2005
 Woven laufala (pandanus) and commercial
 wools
 137.5 x 213cm (irreg., including fringes)
 Acc. 2005.160
 Purchased 2005. Queensland Art Gallery
 Foundation

VAEPAE, Vilealava
 Samoa b.1928
Fala lau'ie 2005
 Woven laufala (pandanus) and commercial
 wools
 186 x 202cm
 Acc. 2005.163
 Commissioned 2005. Queensland Art Gallery
 Foundation

VALAMANESH, Hossein
 Australia b.1949
Miniature with maiden hair fern leaves 2004
 Maiden hair fern leaves with wax varnish on
 paper
 7 x 7.3cm (comp.)

Miniature with rose petals 2003
 Rose petals with wax varnish on paper
 7.1 x 7.1cm (comp.)
 Acc. 2004.191-192
 Purchased 2004. Queensland Art Gallery
 Foundation

VALAMANESH, Hossein
 Australia b.1949
VALAMANESH, Angela
 Australia b.1953
Miniature with bougainvillea petals 1 2004
 Bougainvillea petals with wax varnish on
 paper
 7.2 x 7.2cm (comp.)

Miniature with bougainvillea petals 2 2004
 Bougainvillea petals with wax varnish on
 paper
 7.2 x 7.2cm (comp.)

Miniature with alstromerea petals 1 2003
 Alstromerea petals with wax varnish on paper
 7 x 6.9cm (comp.)

Miniature with alstromerea petals 2 2003
 Alstromerea petals with wax varnish on paper
 7.2 x 7cm (comp.)
 Acc. 2004.187-190
 Purchased 2004. Queensland Art Gallery
 Foundation

van HOUT, Ronnie
 New Zealand b.1962
Abduct (from an untitled portfolio) 1999,
 printed 2004
 Lambda print, ed. 9/20
 37.5 x 49.5cm (comp.)

'after Peryer' (from an untitled portfolio) 1999,
 printed 2004
 Lambda print, ed. 7/20
 37.5 x 49.5cm (comp.)

Hybrid (from an untitled portfolio) 1999,
 printed 2004
 Lambda print, ed. 9/20
 37.5 x 49.5cm (comp.)
 Acc. 2004.293-295
 Purchased 2004

VARIOUS ARTISTS
 Point of view: An anthology of the moving
 image (series) 2003

ALYS, Francis
 Belgium b.1959
El gringo
 DVD: 4:12 minutes, colour, sound, ed.
 unlimited

CLAERBOUT, David
 Belgium b.1969
Le moment

DVD: 2:44 minutes, colour, sound, ed.
 unlimited

GORDON, Douglas
 Scotland b.1966

Over my shoulder
 DVD: 13:48 minutes, colour, sound, ed.
 unlimited

HILL, Gary
 United States b.1951

Blind spot
 DVD: 12:27 minutes, colour, sound, ed.
 unlimited

HUYGHE, Pierre
 France b.1962

I Jedi
 DVD: 5:00 minutes, colour, sound, ed.
 unlimited

JONAS, Joan
 United States b.1936

Waltz
 DVD: 6:24 minutes, colour, sound, ed.
 unlimited

JULIEN, Isaac
 England b.1960

Encore (Paradise Omeros: Redux)
 DVD: 4:38 minutes, colour, sound, ed.
 unlimited

KENTRIDGE, William
 South Africa b.1955
Automatic writing
 DVD: 2:38 minutes, colour, sound, ed. unlimited
McCARTHY, Paul
 United States b.1945
WGG (Wild Gone Girls)
 DVD: 5:20 minutes, colour, sound, ed. unlimited
RIST, Pipilotti
 Switzerland b.1962
I want to see how you see
 DVD: 4:48 minutes, colour, sound, ed. unlimited
SALA, Anri
 Albania b.1974
Time after time
 DVD: 5:22 minutes, colour, sound, ed. unlimited
 Acc. 2004.319.001-011
 Purchased 2004. Queensland Art Gallery Foundation

von **STURMER, Daniel**
 New Zealand/Australia b.1972
The Truth Effect 2003
 DVD and Digital Betacam formats:
 (sequence 1) 1:34 minutes, colour, sound; (sequence 2) 4:17 minutes, colour, silent; (sequence 3) 2:06 minutes, colour, silent; (sequence 4) 1:42 minutes, colour, sound; (sequence 5) 1:58 minutes, colour, silent; with five custom screens, ed. 2/3
 Five screens: 54 x 40.5 x 18cm, 58 x 43.5 x 19.5cm, 54 x 40.5 x 20cm, 60 x 45 x 18cm, 40 x 30 x 13.5cm; (installed dimensions variable)
 Acc. 2005.006
 Purchased 2005. The Queensland Government's Queensland Gallery of Modern Art Acquisitions Fund

WALLER, Christian
 Australia 1894-1954
The Golden Faun (from 'The Great Breath' portfolio) 1932
 Linocut on white wove translucent paper 31.7 x 13.5cm (comp.)
 Acc. 2004.240
 Purchased 2004. Queensland Art Gallery Foundation

WASHBOURNE, Thomas
 Australia active 1860s-90s
(Wannon Falls) c.1870
 Albumen photograph laid down on cardboard 22.2 x 27.6cm (comp., irreg.)
 Acc. 2005.058
 Purchased 2005. The Queensland Government's special Centenary Fund

WATT, Gordon
 Australia b.1939
 (Lardil language group)
Leg markings 2005
 Synthetic polymer paint on canvas 137 x 121cm
 Purchased 2005

WEI Dong
 China b.1968
Snapshot 1999
 Ink and pigment on paper 32.5 x 131.5cm (sight)
 Acc. 2004.287
 Purchased 2004. Queensland Art Gallery Foundation Grant

WILLIAMS, Daryl
 Australia b.1957
 (Lardil language group)
Thuwathu resting place (sandbar) 2005
 Synthetic polymer paint on canvas 137 x 61cm
 Purchased 2005

WILLIAMS, Wunun Wayne
 Australia b.1961
 (Lardil language group)
Birri headband 2005
 Synthetic polymer paint on canvas 137 x 121cm
 Purchased 2005

WILSON, Bradley
 Australia b.1974
 (Lardil language group)
Thambe chest markings II 2005
 Synthetic polymer paint on canvas 121 x 91cm
 Purchased 2005

WILSON, Regina
 Australia b.1948
 (Nganikurrungurr language group)
Syaw (Fish net) 2004
 Synthetic polymer paint on canvas 200 x 210.5cm
 Acc. 2004.175
 Purchased 2004. Queensland Art Gallery Foundation

WONAEAMIRRI, Pedro
 Australia b.1974
 (Tivi language group)
Pwoja (Pukumani body paint design) 2003
 Natural pigments on paper
 Two sheets: 76 x 56cm (each)
 Acc. 2004.305-306
 Purchased 2004

WRIGHT, Judith
 Australia b.1945
Blind of sight III 2001
 Synthetic polymer paint on paper
 Three sheets: 199.5 x 198.5cm (each, approx.)
 Acc. 2004.158-160
 Purchased 2004 with funds from Dr Cathryn J. Mittelheuser, AM, and Margaret Mittelheuser, AM, through the Queensland Art Gallery Foundation

Blind of sight 1 2000
 Betacam SP and DVD formats: 20:00 minutes, black and white, silent, ed. 2/6

Blind of sight 2 2000
 Betacam SP and DVD formats: 10:00 minutes, colour, silent, ed. 2/6
 Acc. 2004.176-177
 Gift of the artist through the Queensland Art Gallery Foundation 2004

YANG, William
 Australia b.1943
About my mother (portfolio) 2003
 Gelatin silver photographs, ed. 2/10
 30 sheets: 51.3 x 61.1cm (comp., each)
 Acc. 2004.161a-dd
 Purchased 2004. Queensland Art Gallery Foundation Grant

YARINKURA, Lena
 Australia b.1961
 (Kune/Rembarrnga language groups)
Yawkyawk (female water spirit) 2004
 Twined pandanus palm leaf (*Pandanus spiralis*), paperbark, natural pigments, feathers and PVC fixative
 195.5 x 47 x 26cm

Yawkyawk (female water spirit) 2004
 Twined pandanus palm leaf (*Pandanus spiralis*), paperbark, natural pigments, natural dyes, feathers and PVC fixative
 216 x 56 x 28.5cm
 Acc. 2004.243-244
 Purchased 2004. Queensland Art Gallery Foundation

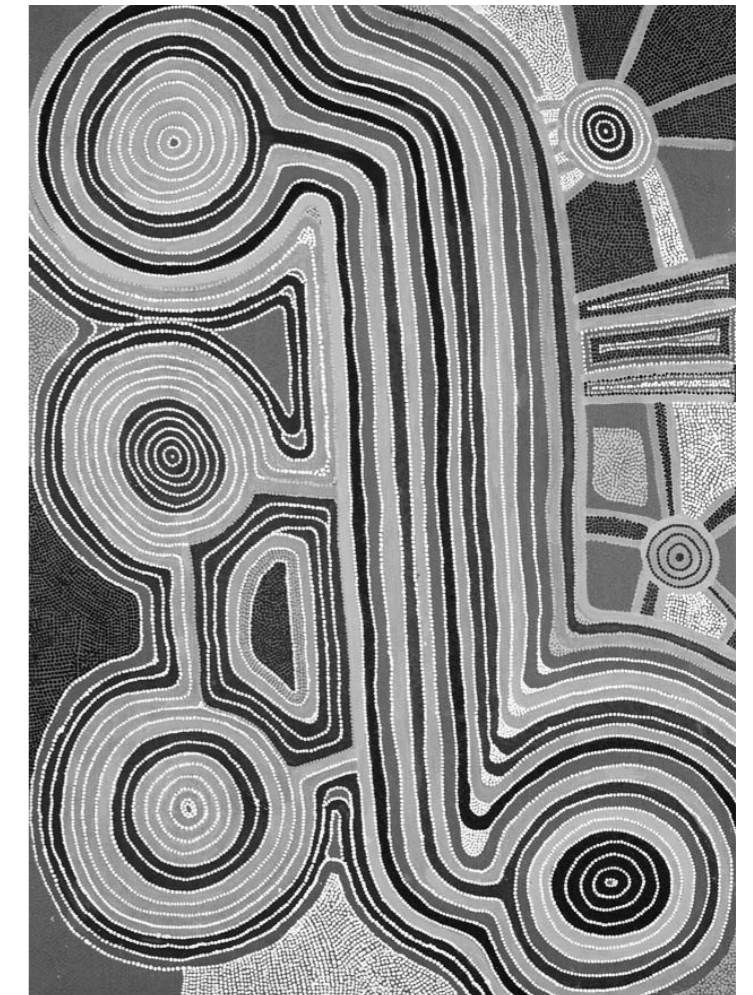
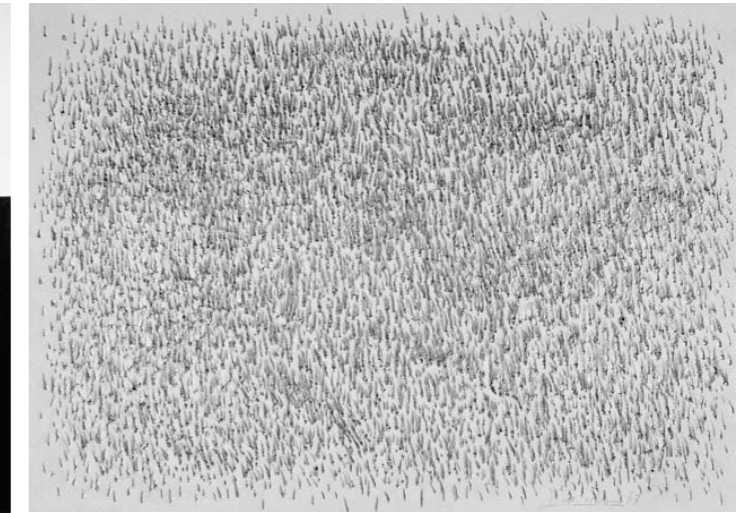
Ngalyod (Rainbow serpent) 2004
 Twined pandanus palm leaf (*Pandanus spiralis*), wood, feathers, paperbark with natural pigments
 23.5 x 370 x 14cm (complete)
 Acc. 2005.036a-c
 Purchased 2004. The Queensland Government's special Centenary Fund

YUNUPINGU, Gulumbu
 Australia b.1945
 (Gumatj language group)
Garak, The Universe 2004
 Natural pigments on bark
 174 x 59cm

clockwise from left:
 Nasreen Mohamedi
 India 1937-90
Untitled c.1971
 Gelatin silver photograph, ed. 7/10
 30.5 x 38.3cm (comp.)
 Purchased 2004. The Queensland Government's Queensland Gallery of Modern Art Acquisitions Fund

Lee Ufan
 South Korea/Japan b.1936
Push up 1967
 Pencil on Japanese washi paper
 39.5 x 54.7cm
 Gift of the artist through the Queensland Art Gallery Foundation 2004

Sunfly Tjampitjin
 (Kukatja language group)
 Australia 1916-96
Poyarrri 1988
 Synthetic polymer paint on canvas
 119.5 x 85cm
 Gift of Daphne Morgan through the Queensland Art Gallery Foundation 2005
 © Sunfly Tjampitjin, 1988. Licensed by VISCOPY, Sydney, 2005



YUNUPINGU, Gulumbu
Australia b.1945
(Gumatj language group)
Garak, The Universe 2004
Natural pigments on bark
204 x 39cm

Garak, The Universe (Larrakitj) 2004
Natural pigments on wood (*Eucalyptus tetradonta*)
385 x 20cm (irreg.)
Acc. 2005.008–010
Purchased 2005

DEACCESSIONS

AFGHAN, TURKMEN PEOPLE

Afghanistan
Rug c.1920
Wool (pile, warp and weft)
332 x 86cm
Acc. 4:0788
Bequest of Blanche Louisa Buttner 1972

ALTON, Aby.

England/Australia/United States 1866–1949
Portrait of a young girl c.1900
Oil on canvas
62 x 52cm
Acc. 1983.066.001
Gift of Lady Trout 1983

ARDEBIL STYLE

Iran
Kelim c.1930
Wool (pile, warp and weft)
323 x 132cm
Acc. 4:0777
Gift of the Queensland Art Gallery Society 1979

ARTS & CRAFTS

England 1880–1900
Sideboard c.1890–94
Stained oak, leaded glass, beaten copper and brass
195 x 155.8 x 56cm
Acc. 1992.272
Purchased 1992 with funds derived from the Blanche Louisa Buttner Bequest

ASTLEY, Charles

Australia 1869–1929
Rose of Evening 1926
Oil on canvas
51 x 91.5cm
Acc. 1:0145
Gift of Cecil B. Astley (the artist's son) 1926

AULD, Muir

Australia 1879–1942
Self portrait c.1930
Oil on canvas on plywood
61.4 x 46cm
Acc. 1:0337
Gift of Robert Auld 1944

BALFOUR, Lawson

Australia 1870–1966
Head study 1941
Oil on canvas
60.6 x 50.2cm (sight)
Acc. 1:0774
Purchased 1958

BELOUCHI PEOPLE

Afghanistan
Balisht (grain/storage sack, front piece) c.1920
Wool (pile, warp and weft)
90 x 62cm
Acc. 4:0761
Bequest of Dr Ernest Singer 1975

Rug c.1900

Wool (pile, warp and weft)
197 x 133cm
Acc. 4:0762
Bequest of Dr Ernest Singer 1975

BIEDERMEIER STYLE

Austria
Parlour setting (settee and 6 chairs) c.1850
Fruitwood upholstered in green and gold stripe fabric
Settee: 95.7 x 146.6 x 65.5cm;
chairs: 89.1 x 46 x 45cm (each)
Acc. 4:0852.001–7
Bequest of Dr Ernest Singer 1975

BOYD, Arthur

Australia 1920–99
Morning landscape c.1961–62
Oil on canvas on plywood
89.7 x 90.2cm (sight)
Acc. 1:1022
Purchased 1965

BOYD, Guy

Australia 1923–88
The tennis player 1975
Bronze on black granite base, ed. 5/6
51.5 x 83.5 x 20cm; 51.8 x 86 x 20cm (with base)
Acc. 1994.115
Gift of Grace Davies and Nell Davies 1994

BUSH, Charles

Australia 1919–89
Near Les Invalides 1952
Oil on composition board
67.5 x 87.7cm
Acc. 1:0552
Purchased 1952

Nude (sketch) c.1940

Oil on cardboard
22 x 16.8cm
Acc. 1:0863
Gift of Sir Daryl Lindsay 1961

BUTLER, J. Somerset

England 1882–unknown
Portrait of Field Marshall Smuts c.1941–59
Oil on canvas
54.2 x 45.6cm
Acc. 1:0800
Gift of the artist 1959

COBURN, Frederick Simpson

Canada 1871–1960
Logging 1933
Oil on canvas laid down on composition board
46 x 61cm
Acc. 1:0216
Purchased 1937

DOBELL, William

Australia 1899–1970
Sketch for Wangi boy c.1955–57
Oil on paper on composition board
27 x 21.8cm (sight)
Acc. 1:0892
Purchased 1962

EDWARDS, Oscar

Australia 1905–96
T'ang dancers and birds 1974
Collage and ink on composition board
90 x 70cm
Acc. 1:1363
Gift of the artist 1975

EDWELL-BURKE, Mary

Australia 1894–1988
Fijian girl reverie 1936
Oil on western red cedar panel
30.7 x 30.5cm (sight)
Acc. 1:0240
Gift of Miss Maria Therese Treweeke 1937

Dorothea and roses 1927

Oil on canvas laid down on composition board
107.8 x 94cm (sight)
Acc. 1:0450
Purchased 1949

ERIVAN

Armenia (Russia)
Rug c.1920
Wool (pile, warp and weft)
148 x 91cm
Acc. 1988.111
Gift of Dr Gertrud Wenzel 1988

ERSARI, TURKMEN PEOPLE

Afghanistan
Rug c.1930
Wool (pile, warp and weft)
175 x 105cm
Acc. 4:0783
Bequest of Blanche Louisa Buttner 1972

GABBEH STYLE

Iran
Rug c.1950–75
Wool (pile, warp and weft)
215 x 104cm
Acc. 4:0767
Bequest of Dr Ernest Singer 1975

GALLOP, Herbert

Australia 1890–1958
Along the creek, Central NSW c.1946
Oil on canvas on composition board
38.1 x 45.7cm
Acc. 1:0381
Purchased 1946

GIBSON, Bessie

Australia 1868–1961
Portrait (woman sitting in chair) c.1940s
Oil on canvas
73 x 59.5cm
Acc. 1:1417

Portrait (woman in blue coat) 1920s

verso image: (*Profile study*) 1920s
Oil on canvas
55 x 45.5cm
Acc. 1:1420a–b
Gift of Dr Walter Lockhart Gibson 1975

GODSON, John B.

England/Australia 1882–1957
Entrance to village, Narellan, NSW c.1946
Oil on canvas on cardboard
26.7 x 34.7cm (sight)
Acc. 1:0376
Purchased 1946

GREENE, Anne Alison

Australia 1878–1954
L'Église Saint-Germain-des-Près, Paris c.1935
Oil on canvas
65.4 x 74cm
Acc. 1:0918
Purchased 1963

GRUNER, Elioth

Australia 1882–1939
The wattles c.1922
Drypoint on cream wove paper, A.P.
17.3 x 21.7cm (comp.)
Acc. 2:0498
Purchased 1962

HALL, Oliver

England 1869–1957
Cotherstone Moor, Yorkshire 1935
Oil on canvas
54 x 75cm
Acc. 1:0262
Gift of the Godfrey Rivers Trust 1939

HANKE, Henry

Australia 1901–89
Portrait of William Rubery Bennett 1958
Oil on canvas
86.4 x 66cm
Acc. 1987.057
Gift of Mrs Violet M. Bennett 1987

HARRISON, H.B.

Australia 1878–1948
Portrait of my wife 1919
Oil on canvas
119.4 x 99.1cm
Acc. 1:0142
Purchased 1924

HERMAN, Josef

England/Wales 1911–2000
Scene on the shore 1973
Oil on canvas
51.4 x 60.8cm
Acc. 1:1297
Purchased 1973

HOUTHUESEN, Albert

England 1903–79
Mansands Bay by Brixham 1965
Oil on composition board
71 x 91.2cm
Acc. 1:1126
Gift of the Contemporary Art Society, London 1970

HUDSON, School of Thomas

England 1701–79
Portrait of a gentleman c.1752–56
Oil on canvas
67.8 x 50.5cm
Acc. 1:1464
Purchased 1976

HULBERT, Thelma

England 1913–95
Flowers by night 1948
Oil on canvas
76 x 63.5cm
Acc. 1:0804
Gift of Sir James (Robert) McGregor, KBE, 1959

JOHNSON, Robert

Australia 1890–1964
Milking time c.1930
Oil on canvas on composition board
37 x 44.7cm (sight)
Acc. 1:0676
Purchased 1955

KARACHOV, KAZAK PEOPLE

Russia (Caucasus)
Rug c.1880
Wool (pile, warp and weft)
256 x 182cm
Acc. 4:0769
Bequest of Dr Ernest Singer 1975

Prayer rug c.1900

Wool (pile, warp and weft)
124 x 174cm
Acc. 4:0778
Bequest of Blanche Louisa Buttner 1972

KURDISH PEOPLE

Iran
Bag face c.1870–1900
Wool (pile) and cotton (warp and weft)
50.4 x 60.5cm
Acc. 4:0760
Bequest of Dr Ernest Singer 1975

LAWRENCE, George

Australia 1901–81
Street gossips 1946
Oil on composition board
29.3 x 21.5cm
Acc. 1:0390
Purchased 1946

Street scene, Paris c.1967

Oil on composition board
45 x 60.2cm (sight)
Acc. 1:1121
Gift of Robert Wilson 1970

(*Street scene*) 1955

Gouache on cardboard laid down on composition board
62.2 x 75cm (sight)
Acc. 1:1732
Purchased 1980

LINDSAY, Lionel

Australia 1874–1961
Morning glory 1932
Wood engraving on thin smooth wove paper, ed. of 100
25.3 x 14.6cm (comp.)
Acc. 2:0838

Indian vulture 1933

Wood engraving and woodcut on thin smooth laid India paper, ed. of 100
18.5 x 11.3cm (comp.)
Acc. 2:0841
Purchased 1975

LINDSAY, Norman

Australia 1879–1969
Little mermaid 1934
Etching and aquatint on cream wove paper, ed. 27/40
17.2 x 12.7cm (comp.)
Acc. 2:0676
Purchased 1972. Lady Trout Gift

Ambush 1927

Etching and aquatint, ed. 55/55
27.7 x 20cm (comp.)
Acc. 2:0880
Purchased 1975

LINDSAY, Raymond
Australia 1904–1960
Portrait of Cherie 1940
Oil on canvas
52 x 39.5cm (sight)
Acc. 1:1365
Gift of Oscar Edwards 1975

LURI STYLE
Iran
Rug c.1950
Wool (pile and weft), cotton and wool (warp)
290 x 142cm
Acc. 4:0776
Purchased 1976

MANN, G.V.F.
Australia 1863–1948
Mt. Gilead, Appin, NSW 1937
Oil on canvas
30.4 x 61 cm
Acc. 1:0343
Purchased 1944

MARMOL, Ignacio
Spain/Australia 1934–94
The pillar of the races 1967
Mixed media on composition board
Four panels: 137 x 183cm (each)
Acc. 1:1109
Purchased 1969

MAZLAGAN STYLE
Iran
Rug c.1940
Wool (pile) and cotton (warp and weft)
197 x 133cm
Acc. 4:0789
Bequest of Blanche Louisa Buttner 1972

McINNES, W.B.
Australia 1889–1939
Landscape c.1919
Oil on wood laid down on composition board
16.5 x 59.6cm (sight)
Acc. 1:1602
Gift of Lady Trout 1978

MOGHAN, KAZAK PEOPLE
Russia (Caucasus)
Rug c.1881
Wool (pile, warp and weft)
258 x 128cm
Acc. 4:0785
Bequest of Blanche Louisa Buttner 1972

OBIN, Seneque
Haiti 1893–1977
(Huntsman with two dogs shooting fowl) mid 20th century
Oil on composition board
51 x 61cm
Acc. 1:1818
Gift of Oscar Edwards 1982

PENDLEBURY, Scott
Australia 1914–86
Towards the city 1953
Oil on composition board
50.9 x 60.5cm
Acc. 1:0623
Purchased 1954

PLANTE, Ada May
New Zealand/Australia 1875–1950
St Mary's, Sydney 1920s
Oil on wood
22.5 x 16.7cm (sight)
Acc. 1:1052
Purchased 1966

RIEDEL, August
Germany/Italy 1799–1883
Rose of Alsace 19th century
Oil on canvas
88 x 64.6cm
Acc. 1:0207
Purchased 1936

RUIZ PIPÓ, Manuel
Spain/France 1929–98
Priere 1974
Oil on canvas
68.7 x 48.8cm
Acc. 1:1325

Oceanica 1974
Oil on canvas
39.4 x 49.2cm
Acc. 1:1326

Maternida en Amarillo 1974
Oil on canvas
99 x 79cm
Acc. 1:1327

Nu rouge (Red nude) 1972
Oil on canvas
98 x 79cm
Acc. 1:1344

Desnudo Triste 1972
Oil on canvas
98.5 x 78.5cm
Acc. 1:1345

(Mother and child)
Etching, ed. 15/20
32 x 24.6cm (comp.)
Acc. 2:0815

(Woman with flowers)
Colour lithograph
57.4 x 41.7cm (comp.)
Acc. 2:0816

(Two figures at a table)
Drypoint, ed. 6/25
16 x 21.5cm (comp.)
Acc. 2:0817

(Bull fighting)
Drypoint, ed. 12/25
24.5 x 32cm (comp.)
Acc. 2:0818

Untitled (portfolio) 1969
Reproductions of lithographs
Ten sheets: 46.2 x 30cm (comp.);
45.8 x 31cm (comp.); 45.5 x 29.8cm (comp.);
46.9 x 30.8cm (comp.); 46 x 26cm (comp.);
44.5 x 27.5cm (comp.); 45.8 x 31.3cm
(comp.); 46.7 x 29.4cm (comp.); 43.5 x
27.8cm (comp.); 41.7 x 28.8cm (comp.)
Acc. 2:0862.001–010
Gift of Mr W. Bowmore 1975

SALOR, TURKMEN PEOPLE
Iran
Rug c.1930–70
Wool (pile) and cotton (warp and weft)
184 x 110cm
Acc. 4:0759
Bequest of Dr Ernest Singer 1975

SALVANA, John
Australia 1873–1956
Sunny morning near Camden, New South Wales 1946
Oil on canvas
50 x 68.6cm
Acc. 1:0382
Purchased 1946

SHIRAZ STYLE
Iran
Rug c.1950
Wool (pile) and cotton (warp and weft)
107 x 81cm
Acc. 4:0774
Bequest of Dr Ernest Singer 1975

SHIRVAN STYLE
Russia (Caucasus)
Rug c.1900
Wool (pile, warp and weft)
127 x 95cm
Acc. 4:0786
Bequest of Blanche Louisa Buttner 1972

SMITH, Jack Carington
Australia 1908–72
Portrait of Frank D. Clewlow 1954
Oil on canvas
94.7 x 76.2cm
Acc. 1:0675
Purchased 1955

SMITH, John Raphael
England 1752–1812
Portrait of Elizabeth Benson 1803
Pastel
26.7 x 24.1cm
Acc. 1:1807
Bequest of Marjorie Beswick Hall 1981

SMITH, Joshua
Australia 1905–95
Portrait of Mignon McKelvey 1967
Oil on plywood
79.7 x 55.9cm
Acc. 1:1077
Gift of Mr S.H. Ervin 1968

Portrait of the artist's mother 1932
Oil on canvas board
34.5 x 30.5cm (sight)
Acc. 1:1463
Purchased 1976

SOLOMON, Lance
Australia 1913–89
Grey gum c.1945–51
Oil on canvas on composition board
40.8 x 44.1cm
Acc. 1:0490
Purchased 1951

TALISH PEOPLE
Russia (Caucasus)
Rug c.1900
Wool (pile, warp and weft)
119 x 77cm
Acc. 4:0763
Bequest of Dr Ernest Singer 1975

UNKNOWN
Head of St John 18th century
Oil on canvas
49.5 x 41cm
Acc. 1:0022
Gift of Stanley G. Hill 1896

UNKNOWN
Macbeth and the witches 19th century
Oil on canvas
119.7 x 148.5cm
Acc. 1:0842A
Bequest of Rebecca Charlotte Wilkins 1960

UNKNOWN
England
Chest with cabriole legs and claw and ball feet c.1715–60
Walnut veneers with cross bandings
78.5 x 66 x 42.6cm
Acc. 4:0815

VICTORIAN
England 1837–1901
Chair c.1840
Mahogany upholstered in floral needlepoint
tapestry
86.9 x 52.4 x 52.1cm
Acc. 4:0845
Bequest of Blanche Louisa Buttner 1972

WAKELIN, Roland
New Zealand/Australia 1887–1971
Interior 1939
Oil on canvas on cardboard
44 x 54.5cm (sight)
Acc. 1:0265
Gift of Miss Maria Therese Treweeke 1939

Flower piece 1944
Oil on cardboard
54.7 x 44.7cm (sight)
Acc. 1:0336
Gift of Miss Maria Therese Treweeke 1944

WHITELEY, Brett
Australia 1939–92
Figure on orange background 1962
Screenprint on wove handmade paper, ed.
15/75
67.9 x 52cm (comp.)
Acc. 2:0560
Purchased 1964

WIGLEY, James
Australia 1918–99
Man with cockatoo c.1969
Oil and synthetic polymer paint on
composition board
91.4 x 68.5cm
Acc. 1:1106
Purchased 1969

WILKIE, Leslie
Australia 1879–1935
Self portrait c.1929
Oil on composition board
36.8 x 24.2cm (sight)
Acc. 1:0411
Gift of Miss Florence Wilkie 1947

WILLIAM AND MARY
England 1689–1702
Secretaire c.1695
Walnut veneers with brass furniture and locks
158.4 x 109 x 50.5cm
Acc. 4:0358
Bequest of Miss Edris Marks 1978

Chest of drawers on stand c.1695
Walnut veneers on an oak carcass
118.5 x 109.5 x 72.5cm
Acc. 4:0799
Purchased 1960

WITHERS, Walter
Australia 1854–1914
Pasturing c.1909
Oil on cedar panel
23.6 x 34.2cm (sight)
Acc. 1:1214
Purchased 1972. Sir Leon Trout Gift

WOLINSKI, Joseph
Germany/Australia 1872–1955
Portrait of A.H. Davis (Steele Rudaj) 1933
Oil on canvas
90 x 70.4cm (sight)
Acc. 1:0257
Purchased 1938

YURUK PEOPLE
Anatolia
Rug c.1930
Wool (pile, warp and weft)
175 x 99cm
Acc. 4:0764

Rug c.1900–20
Wool (pile, warp and weft)
176 x 101cm
Acc. 4:0766

Rug c.1950
Wool (pile, warp and weft)
163 x 100cm
Acc. 4:0770
Bequest of Dr Ernest Singer 1975

EXHIBITIONS SCHEDULE AND SPONSORS

EXHIBITIONS PRESENTED AT THE GALLERY

MAN RAY

8 May – 18 July 2004

An exhibition organised by the Art Gallery of New South Wales

Sponsored by The President's Council of New South Wales

Media Sponsor in Queensland: Adshel

Known as 'the poet of the darkroom', Man Ray's images helped define the twentieth century. 'Man Ray' featured nearly 200 iconic photographs direct from Paris, drawn from the collection of the artist's former assistant, Lucien Treillard, and the Centre Georges Pompidou.

MINIATURES

29 May – 29 August 2004

Presented by the Gallery, 'Miniatures' explored the resurgence of interest in the miniature in South Asian art, and the politically inspired, radical art that draws on the tradition of the miniature from sixteenth-century India.

THE LOOK OF FAITH

26 June 2004 – 20 February 2005

Art and the expression of spirituality have a long and intimate history. Presented by the Gallery, 'The Look of Faith' explored artists' 'poetic' and artistic responses to ideas, expressions and questionings of religious and spiritual faith, throughout several centuries.

BLAK INSIGHTS: CONTEMPORARY INDIGENOUS ART FROM THE QUEENSLAND ART GALLERY COLLECTION

3 July – 3 October 2004

Celebrating NAIDOC Week 2004, 'Blak Insights' presented a fresh perspective on Indigenous Australian art. Featuring more than 140 works displayed over 7 exhibition spaces, 'Blak Insights' exhibited the scope and depth of the Gallery's contemporary Indigenous collection, acquired over the past 20 years.

CLIFFORD POSSUM TJAPALTJARRI

7 August – 24 October 2004

An Art Gallery of South Australia Touring Exhibition

National tour sponsors:

SANTOS

Gordon Darling Foundation

Visions of Australia

Media Sponsor in Queensland: Network Ten

A pioneer and 'star' of the Western Desert dot-painting movement and a charismatic ambassador for his culture, Clifford Possum Tjapaltjarrri revolutionised the way the art of Indigenous peoples was perceived worldwide. This major retrospective exhibition honoured his contribution to Australian art, and featured work from throughout his career.

ESSENTIALLY MODERN: AUSTRALIAN PRINTS FROM THE COLLECTION

11 September 2004 – 30 January 2005

'Essentially Modern' captured the richness and vibrancy of Australian printmaking in the early decades of the twentieth century. It featured arresting hand-coloured woodcuts by Margaret Preston and Thea Proctor, linocuts by Ethel Spowers and Eveline Syme, and the striking black-and-white prints of Christian Waller and Ella Osborn Fry from the Gallery's Collection.

WHITE/LIGHT

23 October 2004 – 13 March 2005

'White/Light' explored the visual qualities and cultural connotations of white and light in a beautiful group of minimalist works from the Gallery's Collection. Yayoi Kusama's magnificent *Narcissus garden* 1966/2002 was installed for the first time since APT 2002, taking centre stage in the Gallery's Watermill, while the surrounding galleries featured works by Lee Ufan, Howard Taylor and Bea Maddock.

TEN THOUGHTS ABOUT FRAMES

13 November 2004 – 28 March 2005

Presented by the Gallery, 'Ten Thoughts about Frames' was an intriguing exploration of the art, history and techniques of framing. From gilded decorative frames of the Middle Ages to contemporary paintings and modern cinema, the exhibition addressed the often overlooked influence of the frame in Western art.

THE NATURE MACHINE: CONTEMPORARY ART, NATURE AND TECHNOLOGY

4 December 2004 – 13 February 2005

Media sponsors:

Quest Community Newspapers

Adshel

HarrisonNess

With the premise 'serious art can be serious fun!', 'The Nature Machine' — the Gallery's annual exhibition for children and families — explored ideas about nature, technology and visions of the future. Innovative exhibition spaces and interactive elements encouraged children to encounter the wonders of the natural as well as future worlds.

SMOKE AND MIRRORS

12 February – 26 June 2005

Drawn from the Gallery's collection of contemporary photography, 'Smoke and Mirrors' explored the ambiguous territory between reality and disguise in self-portraits.

EDUCATION MINISTER'S AWARDS FOR EXCELLENCE IN ART

10 March – 29 May 2005

Supported by:

Department of Education and the Arts

Museum and Gallery Services Queensland

This annual exhibition presents the outstanding achievements of art students from secondary schools throughout Queensland. In 2005, 47 works from entries by approximately 15 000 senior art students were exhibited.

RON MUECK: THE MAKING OF PREGNANT WOMAN 2002

12 March – 5 June 2005

A National Gallery of Australia Travelling Exhibition

Sponsored by:

Australian Air Express

Pregnant woman 2002 is one of Melbourne-born, London-based Ron Mueck's most ambitious works to date. Made predominantly of fibreglass and standing at 2.5 metres, the sculpture is a monumental and contemporary portrayal of motherhood, at once extraordinarily lifelike, yet hyper-real. The display of this work included preparatory sketches, maquettes by the artist and a documentary showing the artist at work.

THE ART OF FIONA HALL

19 March – 5 June 2005

Fiona Hall is one of Australia's leading contemporary artists. Hall's work speaks of the artist's curiosity for the world around her. While some works are whimsical, and others ironic or savagely critical, the wit, passion and knowledge Hall brings to her work consistently beguiles and fascinates audiences. Focusing on works from 1988 to early 2005, this exhibition was the first survey of Fiona Hall's work to be staged by an Australian gallery in more than a decade. Following its presentation at the Gallery, the exhibition travelled to the Art Gallery of South Australia.

PRIME 2005: NEW ART FROM QUEENSLAND

2 April – 12 June 2005

Showcasing the work of contemporary Queensland artists aged 35 and under, 'Prime 2005' was presented by the Gallery to highlight the strength and diversity of current art practice in Queensland.

NO ORDINARY PLACE: THE ART OF DAVID MALANGI

23 April – 17 July 2005

A National Gallery of Australia Travelling Exhibition

Principal Sponsor: Newmont, The Gold Company

A proud partner of Reconciliation Australia

Visions of Australia

Northern Territory Government

in association with Bula'bula Arts,

Ramingining

Channel 7

Australian Air Express

David Malangi Daymirringu was a leading figure in the development of the distinctive central Arnhem Land bark painting movement, and a true innovator in the medium. 'No Ordinary Place' featured around 50 works, brought together for the first time from private and public collections.

DESIGN EXCELLENCE IN QUEENSLAND

4–19 June 2005

Presented by the Design Institute of Australia in association with the Queensland Art Gallery, this exhibition profiled the finalists in the 2005 Queensland Design Awards.

I AM MAKING ART

25 June – 25 September 2005

Exploring performance-based art works from the Gallery's Collection from the 1960s to the present, 'I am Making Art' presented works exploring the idiosyncratic languages of the body and human movement, captured through photography, text and video.

FOCUS/THEMATIC DISPLAYS PRESENTED AT THE GALLERY

FAMILIES AND FICTIONS: CONTEMPORARY PHOTOGRAPHY FROM THE COLLECTION

23 October 2004 – 3 April 2005

'Families and Fictions' featured contemporary photographic works from the Gallery's Collection from the past three decades. The display focused on works that feature the human figure and draw on established photographic traditions in innovative and unexpected ways.

NORTH BY NORTH-WEST: CONTEMPORARY INDIGENOUS ART FROM THE QUEENSLAND ART GALLERY COLLECTION

23 October 2004 – 3 April 2005

Featuring art from Cape York in Queensland to the Kimberley region of Western Australia, this Gallery display celebrated the contemporary artistic achievements derived from knowledge of Country and culture.

PASTELS IN FOCUS

23 October 2004 – 3 April 2005

Highlighting the beautiful, and sometimes daring, work produced in the pastel medium by Australian women artists during the early twentieth century, this Gallery display featured artists who were challenging accepted artistic convention, often using flamboyant style or depicting controversial subject matter.

LUMINOUS: WATERCOLOUR LANDSCAPES OF THE FEDERATION ERA

11 April – 2 October 2005

In the era of Australia's Federation in 1901, the pastoral landscape became a symbol of strong national sentiment. This Gallery exhibition explored the work of Australian watercolourists of this period who promoted this connection, creating light-filled representations of the Australian bush.

NEW ACQUISITIONS: INDIGENOUS AUSTRALIAN ART

June 2005 – March 2006

Encompassing a variety of media — dance and performance, Arnhem Land and desert art, and fibre works — this display presented the many works by contemporary Indigenous artists recently acquired by the Gallery.

EXHIBITIONS PRESENTED IN REGIONAL QUEENSLAND

POP: THE CONTINUING INFLUENCE OF POPULAR CULTURE ON CONTEMPORARY ART

6 August 2003 – 28 November 2004

A Queensland Art Gallery Travelling Exhibition

Principal sponsor: Commonwealth Bank

Logan Art Gallery

6 August – 6 September 2003

Toowoomba Regional Art Gallery

19 September – 2 November 2003

Artspace Mackay

8 November – 21 December 2003

Redcliffe City Art Gallery

7 January – 14 February 2004

Bundaberg Arts Centre

26 February – 21 March 2004

Gladstone Regional Art Gallery and Museum

26 March – 15 May 2004

Perc Tucker Regional Gallery, Townsville

16 July – 5 September 2004

Ipswich Art Gallery

18 September – 28 November 2004

STORY PLACE: INDIGENOUS ART OF CAPE YORK AND THE RAINFOREST

19 May 2004 – 19 June 2005

A Queensland Art Gallery Travelling Exhibition

Sponsored by the Queensland Government, ATSIIC and Comalco

This exhibition is an initiative of the Queensland Art Gallery, supported by the Queensland Gallery of Modern Art

Hervey Bay Regional Gallery

19 May – 23 June 2004

Cairns Regional Gallery

2 July – 29 August 2004

Rockhampton Art Gallery

10 September – 31 October 2004

Cooloolo Shire Art Gallery, Gympie

10 November – 12 December 2004

Artspace Mackay

18 December 2004 – 12 February 2005

Gladstone Regional Art Gallery and Museum

18 February – 9 April 2005

Perc Tucker Regional Gallery, Townsville

22 April – 19 June 2005

STREETON: WORKS FROM THE QUEENSLAND ART GALLERY COLLECTION

8 April 2005 – 4 July 2006

A Queensland Art Gallery Travelling Exhibition

Outback Regional Gallery, Winton

8 April – 12 May 2005

Qantas Founders Outback Museum,

Longreach

28 May – 10 July 2005

Gladstone Regional Art Gallery and Museum

16 July – 24 September 2005

Noosa Regional Gallery

22 October – 27 November 2005

Hervey Bay Regional Gallery

7 December 2005 – 21 January 2006

Dogwood Crossing Art Gallery, Miles

11 February – 26 March 2006

Toowoomba Regional Art Gallery

31 March – 21 May 2006

Stanthorpe Regional Art Gallery

26 May – 4 July 2006

PUBLISHED BY THE GALLERY

Artlines.

[magazine published for the Members of the Queensland Art Gallery]
Spring 2004 – Autumn 2005. (20pp., illus: col.).

Staff contributions:

Arden, Holly. 'Anxiety and morality at the Sydney Biennale'. (Spring 2004, p.9).

Arden, Holly. 'Prime 2005: New Art from Queensland'. (Autumn 2005, p.16).

Butt, Zoe, Ewington, Julie, O'Reilly, Rachel and Simmonds, Toni Mia. "'The Nature Machine" . . . on screen'. (Summer 2004–05, pp.10–13).

Chambers, Nicholas. 'New acquisition: Heads or tails: The art of Orozco'. (Spring 2004, p.5).

Chambers, Nicholas. 'Olafur Eliasson's white lego'. (Autumn 2005, p.17).

Chambers, Nicholas. 'Urban contrasts:

"Manifesta 5": European Biennial of Contemporary Art'. (Summer 2004–05, p.18).

Cooke, Glenn. 'New acquisition: John Campbell's *Sydney House*'. (Autumn 2005, p.5).

Dezuanni, Rebecca. 'Book review: *Strangely Familiar: Design and Everyday Life*'. (Summer 2004–05, p.17).

Ewington, Julie. 'Life and times of a revered painter: Ian Fairweather'. (Summer 2004–05, pp.8–9).

Ewington, Julie. 'White/Light'. (Spring 2004, pp.12–13).

Goddard, Angela. 'On tour with "Story Place"'. (Summer 2004–05, p.15).

Goddard, Angela. 'Romanticism and swimming in bush creeks: Arthur Streeton'. (Autumn 2005, pp.14–15).

Gunning, Judy. 'Sharmini Pereira'. (Summer 2004–05, p.16).

Hall, Doug. 'Dr Bruce Gutteridge 1928–2005'. (Autumn 2005, p.16).

Kirker, Anne. 'Book review: A classic in revisionist art history . . .'. (Spring 2004, p.18).

Lee, Alison. 'New acquisition: William Yang's *About my mother*'. (Summer 2004–05, p.5).

Littley, Samantha. 'Essentially Modern'. (Spring 2004, pp.14–16).

McDougall, Ruth. 'Like a skin: The work of Judith Wright'. (Summer 2004–05, p.14).

Meredith, Eric. 'Book review: *No Ordinary Place: The Art of David Malangi*'. (Autumn 2005, p.17).

Mundine, Djon. 'Michael Riley 1960–2004'. (Summer 2004–05, p.18).

Mundine, Djon. 'Why make art? Because we can: In conversation with Richard Bell'. (Spring 2004, pp.6–8).

Page, Maud. 'A woven day'. (Spring 2004, p.10–11).

Ryan, Kate. "'The Nature Machine" Summer Festival children's program'. (Autumn 2005, pp.12–13).

Were, Ian. 'The art of Fiona Hall: In conversation with the artist'. (Autumn 2005, pp.8–11).

Were, Ian. 'Book review: *Goddess: The Classical Mode*'. (Summer 2004–05, p.17).

Artmail.

(e-bulletins) No.64–87, 2004–05.

The Art of Fiona Hall.

(2005, education resource kit, illus: col.). <http://www.qag.qld.gov.au/exhibitions/travelling/the_art_of_fiona_hall>

Asia–Pacific Triennial of Contemporary Art 2006.

(2005, brochure, illus: col., b/w).

Kuril's Deadly Insights.

(2004, children's activity book, illus: col.).

The Nature Machine: Contemporary Art, Nature and Technology.

(2004, brochure, illus: col.).

The Nature Machine: Contemporary Art, Nature and Technology.

(2004, children's activity book, illus: col.).

Preview.

(quarterly, brochure, illus: col.).

Queensland Art Gallery Annual Report 2003–04.

(2004, 68pp., illus: b/w).

Queensland Art Gallery Foundation Annual Report 2003–04.

(2004, 56pp., illus: col., b/w).

Streeton: Works from the Queensland Art Gallery Collection.

(2005, brochure, illus: col.).

Streeton: Works from the Queensland Art Gallery Collection.

(2005, online education resource kit, illus: col.). <<http://www.qag.qld.gov.au/exhibitions/travelling/streeton>>

PUBLICATIONS IN PROGRESS AT 30 JUNE

Asia–Pacific Collection.

[working title] (book, illus: col., b/w.).

APT 2006: Asia–Pacific Triennial of Contemporary Art.

(exhibition catalogue).

Australian Art Collection 1966–2005.

[working title] (book, illus: col., b/w.).

Barbara Heath: Jeweller to the Lost.

(exhibition catalogue).

Kiss of the Beast.

(exhibition catalogue).

Sparse Shadows, Flying Pearls: A Japanese Screen Revealed.

(exhibition catalogue).

CONTRIBUTIONS TO EXTERNAL PUBLICATIONS

Campbell, Jessica. 'Andrew Reward'.

Collaberatum, Queensland College of Art and University of Queensland Society of Fine Arts, 2005.

Campbell, Jessica. 'Janice Kuczkowski'.

Collaberatum, Queensland College of Art and University of Queensland Society of Fine Arts, 2005.

Campbell, Jessica. 'Re<growth imag.in.ing nature'. *Local Art*, issue 17, December 2004, pp.10–11.

Cooke, Glenn. 'From coal mines to rain forests: Lloyd Bird'. *Australian Garden History*, February–April 2005, pp.15–17.

Cooke, Glenn. 'The image of the Glasshouses'. *The World of Antiques and Art*, August 2004 – February 2005, pp.140–7.

Cooke, Glenn. 'Isaac Walter Jenner: Views of Brisbane River'. *The World of Antiques and Art*, February–August 2005, pp.126–7.

Cooke, Glenn. 'Lawrence Daws: The development of justice in Queensland'. *Artworks Queensland* (Arts Queensland), 2004, pp.16–19.

Cooke, Glenn. 'Louis Bilton and Australian flora'. *Australiana*, vol.26, no.3, August 2004, pp.4–6.

Cooke, Glenn. 'Pottery by Bessie Devereaux'. *The World of Antiques and Art*, vol.68, February–August 2005, pp.98–102.

Cooke, Glenn. 'Wilson artists'. *Wilson Architects 1884–2004: Four Generations of Continuous Practice*. University Art Museum, St Lucia, 2004, pp.31–5.

Dudley, Andrew. 'Droit de suite: Fair rewards for Aboriginal artists?'. *The Art Newspaper*, no.149, July–August 2004, p.27.

Ewington, Julie. *Fiona Hall*. Piper Press, Annandale, NSW, 2005. (192pp., illus: col.)

Ewington, Julie. 'Helen Britton: Second nature'. *Helen Britton: Second Nature*, Form, Contemporary Craft and Design WA, Perth, 2004.

Hall, Nicola. 'Modern art, new museums'.

International Institute for Conservation of Historic and Artistic Works, 2004, <http://www.iiconservation.org/conferences/bilbao/blb_review.php>

Kirker, Anne. 'The 33rd Alice Prize 2004'.

State of the Arts, 2004, <<http://www.stateart.com.au/sota/>>

Kirker, Anne. 'Coupling: Responding to recent work of Judith Wright'. *Eyeline*, no.54, Winter 2004, pp.32–3.

Kirker, Anne. 'Cultural Beacon for Tokyo'. *Museums Australia Magazine*, vol.13, no.4, May 2005, pp.22–3.

Kirker, Anne. 'Double bond: The Paris etchings 1993–1999'. *Nature/Culture: Raymond Arnold Prints 1983–2004* [exhibition catalogue]. Australian Galleries in association with the Embassy of Australia, Washington DC, 2005, pp.25–30.

Kirker, Anne. 'A New Zealander at the Pacific rim: Philippa Blair in Venice'. *Art New Zealand*, no.113, Summer 2004–05, pp.58–61.

Littley, Samantha. 'Godfrey Rivers's Sir Samuel Walker Griffith'. *Artworks Queensland* (Arts Queensland), 2004, pp.28–31.

O'Reilly, Rachel. "'Cooking Stories" at the Melbourne Immigration Museum' [review]. *Postcolonial Studies*, vol.8, no.1, 2005, pp.45–50.

O'Reilly, Rachel. "'Mecha-lust, Mecha-love" at Straight Out of Brisbane' [review]. *RealTime*, no.65, February–March 2005, p.30.

O'Reilly, Rachel. 'Strategies of ambiguity: "Liminal Insterstices: The Crevice in Ambiguous Space" by Leah King-Smith' [review]. *RealTime*, no.67, May–June 2005.

O'Reilly, Rachel. 'Vile inarticulateness' and 'The hieroglyphics of love'. *Grant Stevens: When There's Love* [exhibition catalogue]. Metro Arts, Brisbane, 2005.

Pemble-Smith, Cathy. 'Queensland Art Gallery Research Library'. *ARLIS/ANZ Journal: Journal of the Arts Libraries Society, Australia and New Zealand*, no.58, December 2004, pp.72–5.

Seear, Lynne. *William Robinson: Paintings and Sculptures 2003–2005*. Australian Galleries, Collingwood, Victoria, 2005. (65pp., illus: col.)

Weir, Kathryn. 'Make-up call: Cindy Sherman'. *Art Monthly*, no.177, March 2005, pp.6–7.

Weir, Kathryn. 'She dresses up like that to go out for noodles? Fashion and restraint in Wong Kar-wai's *In the Mood for Love*'. *TAASA Review: The Journal of the Asian Arts Society of Australia*, vol.14, no.1, March 2005, pp.16–18.

Were, Ian. 'Craft + design. What's in a name?'. *Art Monthly*, Canberra, no.171, July 2004, pp.30–3.

Were, Ian. 'Critic's choice' [book reviews]. *State of the Arts*, Sydney, January–March, 2005, p.35.

Were, Ian. 'In the Pacific rim: International artist residencies'. *Object*, Sydney, no.45 (Dec. 2004), pp.64–7.

Were, Ian. 'Retrospective reviews (1984–1994): A personal view'. *Object*, Sydney, no.44 (July 2004), p.50.

Were, Ian. 'Stranger than Photography' [exhibition review]. *Photofile*, Sydney, no.73, Summer 2005, p.77.

Woods, Chantelle. 'Return to Queensland's top end: Lockhart River Art Centre'. *Artlink*, vol.25, no.2, 2005, p.63.

PAPERS PRESENTED (UNPUBLISHED)

Cooke, Glenn. 'Campbell's Pottery Garden Statuary and Urns'. Australian Garden History Society, Brisbane, 26 March 2005.

Dudley, Andrew and Flatt, Naomi.'Pentimento: The Master of Frankfurt's *Virgin and child*'. University of Queensland 'Looking at Art' course, Queensland Art Gallery, Brisbane, 12 April 2005.

Ewington, Julie. 'The Art of Fiona Hall'. AAANZ Conference, University of Auckland, Auckland, 1–3 December 2004.

Ewington, Julie. 'The Art of Fiona Hall'. University of Queensland, Brisbane, 14 September 2004.

Ewington, Julie. 'The Art of Fiona Hall'. Queensland College of Art, Brisbane, 26 April 2005.

Ewington, Julie. 'Emiko Kasahara'. Biennale of Sydney Education Program, Art Gallery of New South Wales, Sydney, 13 August 2004.

Flatt, Naomi and Heron, Don. 'Ten Thoughts about Frames'. Queensland University of Technology Interior Design Course, Queensland Art Gallery, Brisbane, 24 March 2005.

Gunning, Judy. 'Archives in the Art Museum: Contemporary Asian Art at the Queensland Art Gallery'. Asia Art Archive: Archiving the Contemporary: Documenting Asian Art Today, Yesterday and Tomorrow, Hong Kong, 19 April 2005.

Hall, Doug. 'The Asia–Pacific Triennial of Contemporary Art and the Queensland Gallery of Modern Art'. World Expo 2005: Queensland Week Arts and Culture in Queensland, Aichi, Japan, 15 April 2005.

Hall, Doug. 'Expanding Practice and Creating a New Paradigm'. CIMAM Seoul 2004 General Conference: The Shifting Landscape of Art, Seoul, 1–4 October 2004.

Hall, Doug. 'The Gifts of Sir Leon and Lady Trout to the Queensland Art Gallery'. The Felton Centenary Symposium: Private Philanthropy and Public Art Museums in Australia, Melbourne, 26 November 2004.

Kirker, Anne. 'Engaging Discontent: Fluxus Printed Matter'. 2nd Australian Artists' Books Forum, Artspace Mackay, 25 February 2005.

Raffel, Suhanya. 'Privileging the Art of Now: Collecting Contemporary Asian Art'. Asia Art Archive: Collecting Contemporary Asian Art and the Art Market, Hong Kong, 13 July 2004.

WEBSITES PRODUCED BY THE

GALLERY

Australian Art Books Online

<www.australianartbooks.com.au>

Prime 2005: New Art from Queensland

<www.prime2005.com>

Queensland Art Gallery

<www.qag.qld.gov.au>

VIDEOS AND DVDS PRODUCED BY THE GALLERY

I am Making Art

Artist Performances [originally filmed in 1997 in association with the Queensland Art Gallery exhibition 'Francesco Conz and the Intermedia Avant-garde'; edited for 'I am Making Art' screening room]
Elision, *Untitled*.

Duration: 11:47 minutes, 2005 [1997]

Alison Knowles, *Newspaper music*.

Duration: 7:31 minutes, 2005 [1997]

Ben Patterson, *A simple opera*.

Duration: 3:28 minutes, 2005 [1997]

Ben Patterson, *World weather*.

Duration: 33:55 minutes, 2005 [1997]

The Nature Machine: Contemporary Art, Nature and Technology

Canine-cam [30 'Canine-cam' DVDs].

Duration: 3:28 minutes [each], 2005

Co Hoedeman: Children's animation workshop [6 children's animations].

Duration: 4 minutes, 2005

Prime 2005: New Art from Queensland

Artist Interviews [8 artist interviews for 'Prime 2005' website].

Peter Alwast.

Duration: 1:19 minutes, 2005

Chris Handran.

Duration: 2:15 minutes, 2005

Natalya Hughes.

Duration: 2:03 minutes, 2005

Alasdair Macintyre.

Duration: 1:51 minutes, 2005

Sandra Selig.

Duration: 2:07 minutes, 2005

Grant Stevens.

Duration: 2:13 minutes, 2005

Daniel Templeman.

Duration: 1:50 minutes, 2005

Jemima Wyman.

Duration: 2:26 minutes, 2005

Ten Thoughts about Frames

Thought 10: Framing is a technique used in film.

Duration: 5:25 minutes, 2004

Exhibition branding projection

[for exhibition entry].

Duration: 1 minute, 2004

BOARD OF TRUSTEES AND EXECUTIVE MANAGEMENT TEAM

STAFF PROFILE

STATISTICAL SUMMARY

BOARD OF TRUSTEES	TERM OF APPOINTMENT	
CHAIR		
Mr Wayne Goss	24/06/02 to 23/06/05	24/06/05 to 02/02/08
DEPUTY CHAIR		
Ms Ann Gamble Myer	24/06/02 to 23/06/05	24/06/05 to 02/02/08
MEMBERS		
Mr Tim Fairfax, AM	24/06/02 to 23/06/05	24/06/05 to 02/02/08
Mr Mark Gray	24/06/02 to 23/06/05	24/06/05 to 02/02/08
Dr Morris Low	24/06/02 to 23/06/05	(resigned 09/02/05)
Ms Katrina McGill	24/06/02 to 23/06/05	24/06/05 to 02/02/08
Ms Sue Purdon	31/01/02 to 30/01/05	03/02/05 to 02/02/08
Mr Brian Robinson	24/06/02 to 23/06/05	24/06/05 to 02/02/08
Ms Maureen Hansen	12/06/03 to 11/06/06	
Mr Craig Koomeeta	03/02/05 to 02/02/08	
Professor Michael Wesley	23/06/05 to 02/02/08	
(Section 6 (1) of the <i>Queensland Art Gallery Act 1987</i> provides for the Board to consist of the number of members appointed by the Governor in Council)		
EXECUTIVE MANAGEMENT TEAM		
The Executive Management Team provides strategic direction and manages the Gallery's operations and programs.		
DIRECTOR		
Mr Doug Hall, AM		
ASSISTANT DIRECTOR, CURATORIAL & COLLECTION DEVELOPMENT		
Ms Lynne Seear		
ASSISTANT DIRECTOR, MANAGEMENT & OPERATIONS		
Mr Alan Wilson		
ASSISTANT DIRECTOR, PUBLIC PROGRAMS		
Mr Andrew Clark		

STAFF PROFILE AS OF 30 JUNE 2005	Permanent	Temporary	Casual	Trainee
Directorate				
Directorate	2			
Building & Development	2	1		
Foundation	1	2		
Curatorial & Collection Development				
Administration	1			
Curatorial	9	14		1
Conservation	9	4	2	
Registration	4	1		
Information & Publishing Services	9	3	1	
Public Programs				
Administration	2			
Managerial Research	1	4		
Exhibitions & Display	5	5		1
Access, Education & Regional Services	4	8		
Marketing & Communications	2	5		1
Audience Development	2	1		
Design, Web & Multimedia	2	6		
Management & Operations				
Administration	5			
Financial Services	4			
Gallery Store	5		2	
Protection & Services	33		3	
Information Technology	4	1		
TOTAL	106	55	8	3

NUMBER OF BOARD OF TRUSTEES MEETINGS	8
ATTENDANCE	
Total Gallery attendance	350 765
Total attendance at exhibitions in regional Queensland	48 825
EXHIBITIONS AND SERVICES — REGIONAL QUEENSLAND	
Total travelling exhibitions	3
Exhibition venues	9
Total exhibition attendances	48 825
Total visits by Gallery staff to regional Queensland	122
POP: THE CONTINUING INFLUENCE OF POPULAR CULTURE ON CONTEMPORARY ART	
Last 2 of 8 venues (48 works)	
Perc Tucker Regional Gallery, Townsville	9821
Ipswich Art Gallery	10 323
Total attendance last 2 venues	20 144
STORY PLACE: INDIGENOUS ART OF CAPE YORK AND THE RAINFOREST	
Last 6 of 7 venues (44 works)	
Cairns Regional Gallery	8993
Rockhampton Art Gallery	1262
Cooloola Shire Art Gallery, Gympie	560
Artspace Mackay	4801
Gladstone Regional Art Gallery and Museum	2455
Perc Tucker Regional Gallery, Townsville	8611
Total attendance last 6 venues	26 682
STREETON: WORKS FROM THE QUEENSLAND ART GALLERY COLLECTION	
First venue (11 works)	
Outback Regional Gallery, Winton	1999
ACQUISITIONS	
Asian art	6
Australian art	34
Contemporary Asian and Pacific art	75
Contemporary Australian art	66
Indigenous Australian art	118
International art	41
Total	340
Acquired through Foundation	152

EDUCATION — ACCESS	
Students participating in booked tours (guided and unguided)	30 793
Schools receiving Education Brochure	1787
Children's programs/events total attendance	144 496
Children's activities and workshops	75
Total attendance	3031
Public programs total attendance (youth, tertiary and adult)	3414
PHOTOGRAPHIC REPRODUCTIONS AND COPYRIGHT CLEARANCES	
External reproduction requests (240 works)	106
Internal reproduction requests (355 works)	50
Internal copyright clearances sought (299 works)	53
PUBLICATIONS	
Published by the Gallery	12
In progress at 30 June	6
Staff contributions to external publications	35
Papers presented (unpublished)	13
Websites	3
Videos	42
WEBSITE USAGE	
Queensland Art Gallery *(<www.qag.qld.gov.au>)	
Total hits	11 213 212
Page views	2 221 891
User sessions	398 198
*Includes the main Queensland Art Gallery website and all exhibition websites hosted within the <www.qag.qld.gov.au> domain, but excludes the Gallery Store website.	
VOLUNTEERS	
Curatorial volunteers	4
Information Officer volunteers	27
Library volunteers	8
Children's program volunteers	1
Survey volunteers	8
Volunteer Guides	121

OVERSEAS TRAVEL

Overseas travel in the 2004–05 financial year has focused on undertaking key research and Collection development for 'APT 2006: Asia-Pacific Triennial of Contemporary Art'. Research for Queensland Gallery of Modern Art (QGMA) exhibitions, programs and initiatives, including the Australian Centre of Asia-Pacific Art, Children's Art Centre and Australian Cinémathèque, has also been a focus of overseas travel.

NAME OF OFFICER AND POSITION	DESTINATION	REASON FOR TRAVEL	AGENCY COST \$	\$*
Tony Albert Exhibitions Project Officer and Indigenous Trainee Coordinator	Italy	To participate in the Emerging Curators Initiative at the 2005 Venice Biennale.	–	5000
Anne Carter Head of Conservation	Germany, Spain	To attend the International Institute for Conservation's Modern Art, New Museums congress in Bilbao, Spain; view the 'MoMa in Berlin' exhibition; visit various galleries and museums.	7139	–
Nicholas Chambers Assistant Curator, Contemporary International Art	Italy, Spain, Germany	To courier the Gallery's art work, <i>Trois danseuses à la classe de danse (Three dancers at a dancing class)</i> c.1888–90 by Edgar Degas to Italy; raise awareness of the Gallery's building development and new initiatives; meet with gallerists about proposed acquisitions; visit a major international exhibition in San Sebastian.	8863	9000
	Italy, Switzerland, Germany, England, USA	To undertake a residency at the Yale Center for British Art; participate in the Emerging Curators Initiative at the Venice Biennale; conduct research towards the Andy Warhol exhibition, forthcoming exhibitions, and the Gallery's contemporary international art collection.	9176	5000
Andrew Clark Assistant Director, Public Programs	Japan, China, Germany, Italy	To supervise the demount, condition reporting and packing of the Gallery's art work <i>Trois danseuses à la classe de danse (Three dancers at a dancing class)</i> c.1888–90 by Edgar Degas and courier the work from Rome to Brisbane; meet with artists selected for possible inclusion in APT 2006; build and develop professional networks with artists, dealers and galleries, carry out research into artists and works for consideration for the Gallery's Collection, and research best-practice methods of displaying and interpreting modern and contemporary art.	7545	7759
Julie Ewington Head of Australian Art	New Zealand	To present a paper on Australian artist Fiona Hall at the Annual Conference of the Art Association of Australia and New Zealand; visit various galleries to assess works for possible loan and/or acquisition for future QGMA exhibitions and the Pacific art collection.	2292	–
Judy Gunning Head of Information and Publishing Services	Hong Kong	To present a paper at the workshop Archiving the Contemporary: Documenting Asian Art Today, Yesterday and Tomorrow; to promote the Australian Centre of Asia-Pacific Art and to develop professional networks with similar cultural institutions and colleagues.	2086	1318
	Hong Kong	To meet with representatives of the Asia Art Archive; to promote the Gallery's Asian and Pacific research collection; to visit library and research facilities for QGMA planning; and to acquire resources for the Gallery's Research Library.	4428	–
Doug Hall Director	Korea, China, Japan	To deliver a paper at the 2004 CIMAM Conference – International Council of Museums (ICOM), The Shifting Landscape of Contemporary Art, in Seoul, to further negotiations and discussions in relation to gifts of art works, possible donations, exhibition development, potential acquisitions, and alliances with like-minded institutions, as well as research and professional development purposes.	9928	–
	Japan	To speak at a reception at Aichi World Expo 2005 – Arts and Culture in Queensland in the Australian Pavilion – an event organised by the Queensland Government for Queensland Week; visit various museums and galleries important to the Gallery's forward program (including APT 2006).	8210	–
Don Heron Head of Exhibitions and Display	England, Denmark	To meet with artists and view works proposed for inclusion in APT 2006; view exhibitions at the Tate Modern; and receive training in the set-up of a new video installation recently acquired by the Gallery.	8466	–
John Massy Audience Development Manager	Japan	To lead a Friends of the Queensland Art Gallery tour to Japan.	–	7000

NAME OF OFFICER AND POSITION	DESTINATION	REASON FOR TRAVEL	AGENCY COST \$	\$*
Ruth McDougall Curatorial Assistant, QGMA	Fiji, Samoa, Kingdom of Tonga, Cook Islands, Tahiti, New Zealand	To conduct research, promotion and selection of works for APT 2006 and the Gallery's contemporary Pacific collection.	7485	–
Diane Moon Curator, Indigenous Fibre Art	Republic of Palau, Philippines	To attend the 9th Festival of Pacific Arts; undertake research for APT 2006; build and further develop professional networks with artists, dealers and galleries.	5003	–
	Fiji, Samoa, Kingdom of Tonga, Cook Islands, Tahiti, New Zealand	To conduct research, promotion and selection of works for APT 2006 and the Gallery's contemporary Pacific collection.	14 719	–
Elliott Murray Head of Design, Web and Multimedia	USA	To undertake research at numerous cultural institutions in the United States as part of a Gordon Darling Foundation Travel Grant – Global 2005.	4624	12 000
Maud Page Curator, Contemporary Pacific Art	Republic of Palau, Philippines	To attend the 9th Festival of Pacific Arts; undertake research for APT 2006; build and further develop professional networks with artists, dealers and galleries.	5574	–
Suhanya Raffel Head of Asian, Pacific & International Art	Hong Kong	To present a lecture at the Asia Art Archive; advocate and promote the Gallery's leading international role in collecting contemporary Asian and Pacific art; meet with prospective donors and collectors; research artists for APT 2006; raise awareness of the Gallery's building development; and further build on professional networks.	200	1373
	Sri Lanka, India	To conduct research and promotion related to APT 2006; research works in the Gallery's contemporary Asian and international art collections; and develop the Gallery's professional networks, exchange arrangements and Research Library holdings.	5905	–
Lynne Seear Assistant Director (Curatorial & Collection Development)	USA	To negotiate the participation of a senior Hawaii-based Japanese artist in APT 2006; research and promote APT 2006; research related to the Gallery's contemporary Asian and international art collections; research related to exhibition development and interpretive strategies.	13 089	–
	USA	To negotiate the participation of a senior Hawaii-based Japanese artist in APT 2006; research and promote APT 2006; research related to the Gallery's contemporary Asian and international art collections; research related to exhibition development and interpretive strategies.	12 786	–
Sarah Tiffin Curator, Historical Asian Art	USA	To further develop a long-term exchange agreement in partnership with the Arthur M. Sackler Gallery (Washington DC); liaise with dealers of historical Asian art with a view to immediate and future acquisitions; research the display of historical Asian material at art museums with international reputations in the field.	10 000	–
Julie Walsh Program Officer (Education and Children's Art Centre)	Italy, England	To participate as part of the team for the Australian Pavilion at the 2005 Venice Biennale; research programs for children and young audiences at the Tate Modern and Tate Britain, and contemporary art exhibition presentation and programming.	3674	6483
Kathryn Weir Head of Cinema	South Korea, China	To view the Busan and Shanghai biennial contemporary art exhibitions; attend the Pusan International Film Festival; meet with film-makers, artists and relevant professionals; conduct research for the Gallery's Collection and programs.	10 466	–
Robyn Ziebell Project Officer, Asian, Pacific & International Art	Sri Lanka, India	To conduct research and promotion related to APT 2006; research works in the Gallery's contemporary Asian and international art collections; and develop the Gallery's professional networks, exchange arrangements and Research Library holdings.	9538	–
*CONTRIBUTION FROM OTHER AGENCIES OR SOURCES				

ETHICS AND CODE OF CONDUCT

The Gallery's Code of Conduct is based on the ethics, principles and obligations outlined in the *Public Sector Ethics Act 1994* and was developed following consultation with all staff.

New employees receive the Code of Conduct as part of their commencement kit and the Code is available to all staff on the Gallery's intranet. The Code applies to all paid employees as well as volunteers.

Persons other than staff members can inspect the Code, free of charge, upon request at the Gallery's Research Library, with extracts or a full copy available free of charge.

During the year, workshops for new supervisory staff included reference to the Code.

EQUAL EMPLOYMENT OPPORTUNITY

Strategies to achieve the objectives contained in the Gallery's Equal Employment Opportunity (EEO) Management Plan 2003-05 continued to be implemented and monitored against target dates during the year.

Key strategies included:

- > conducting career planning sessions
- > continuing the Indigenous traineeship program
- > continuing online anti-discrimination training and certification for new supervisors and managers
- > ensuring access to human resource policies through the intranet and providing printed copies in the Gallery's Research Library.

HUMAN RESOURCE ISSUES

The Gallery:

- > continued its Change Management Program for staff in preparation for the Gallery's transition to a two-site organisation
- > continued the recruitment of additional staff to undertake planning and program/services preparation for the Queensland Gallery of Modern Art
- > continued the traineeship program
- > continued online anti-discrimination training for supervisors
- > provided a range of staff training and professional development
- > conducted workshops for new supervisory staff.

RISK MANAGEMENT

Due to the size of the Queensland Art Gallery, a separate risk management committee has not been established. However, the Gallery's Executive Management Team, comprising the Director and three Assistant Directors, is responsible for the implementation and monitoring of the Gallery's risk management process.

A fraud risk audit was completed during the year.

Other risk control measures were reviewed.

Gallery representatives participated in the Government's Agency Preparedness program.

AUDIT COMMITTEE

The Board of Trustees Audit Committee, consisting of Mr Tim Fairfax, AM, Mr Wayne Goss, Mrs Ann Gamble Myer (Trustees) and Mr Doug Hall, AM (Director), met on one occasion.

The following internal audits were undertaken:

- > IT Security Review — Webmail service
- > Physical Security Audit of the Collection.

RECORDKEEPING

The Gallery's recordkeeping practices are currently under review to ensure compliance with the *Public Records Act 2002* and *Information Standard 40* (IS40). The Queensland State Archives (QSA) Recordkeeping Practices Survey has been completed and a Strategic Records Implementation Plan will be developed, assessed by QSA and implemented by the end of 2007, as per the requirements of IS40.

WORKPLACE HEALTH AND SAFETY

The Gallery has a Workplace Health and Safety Committee consisting of workplace health and safety representatives elected by staff, five Workplace Health and Safety Officers, the Assistant Director (Management and Operations), and the Head of Exhibitions and Display. The Committee met on six occasions during the year and:

- > facilitated training of representatives in health and safety issues
- > monitored online training for all staff
- > conducted regular inspections of work areas
- > responded to all reported/identified hazards.

The Gallery is also represented on the Queensland Cultural Centre's Workplace Health and Safety Committee which met on six occasions.

WHISTLEBLOWERS PROTECTION ACT

There were no disclosures received over the reporting period.

CONSULTANCIES

During 2004-05, the Gallery used the services of consultants to carry out specific tasks where their expertise was required:

CATEGORY	\$
Management	-
Professional — Technical	\$77 059
TOTAL	\$77 059

BOARD OF TRUSTEES COSTS

In 2004-05, meeting fees and travel costs of Board members totalled \$22 255.

MAJOR INVESTMENTS AND BORROWINGS

There were no major investments or borrowings during the year.

FINANCIAL AND OPERATIONAL PERFORMANCE SYSTEMS

The Gallery's financial systems and their uses are as follows:

- > Finance 1 and Great Plains's e'Enterprise are used primarily for processing financial data and obtaining reports.
- > Whole-of-government financial information is reported using the Queensland Government's Tridata system.
- > The Gallery Store uses Booknet as their point-of-sale system.

Reports on operational performance against declared goals, strategies and benchmarks are prepared and presented at each meeting of the Board of Trustees. Quarterly, non-financial performance reports measured against declared targets are submitted to Arts Queensland and Queensland Treasury.

ENTITIES CONTROLLED

The Queensland Art Gallery Foundation was established in 1979 by the Queensland Art Gallery Board of Trustees to raise corporate and private funding to support the growth of the art collection and exhibition programs. The Gallery provides all the infrastructure support and meets all operational costs of the Foundation. For the purposes of the *Financial Administration and Audit Act 1977*, the Foundation is an entity controlled by the Queensland Art Gallery Board of Trustees.

Financial reports are prepared by the Gallery for submission to the Foundation's Council. The Foundation produces its own annual report and its books and accounts were audited by the Queensland Audit Office.

Financial reports are prepared by the Gallery for submission to the Foundation's Council. The Foundation produces its own annual report and its books and accounts were audited by the Queensland Audit Office.

The Queensland Art Gallery has completed the 2004-05 financial year in a fiscally good position with an increase in Equity of \$10.9 million.

In the financial statements of the Gallery the term 'parent entity' refers to the Queensland Art Gallery, whereas the term 'economic entity' reports the combined position of the Queensland Art Gallery and the Queensland Art Gallery Foundation.

This is necessary as the Queensland Art Gallery Foundation has been classified as a controlled entity of the Queensland Art Gallery.

STATEMENT OF FINANCIAL PERFORMANCE

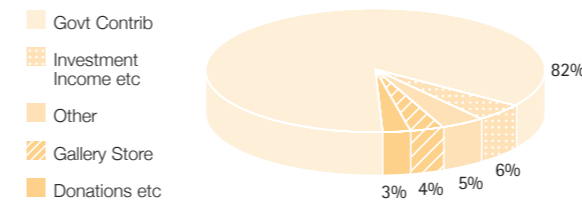
The Statement of Financial Performance is used to compare revenue to expenses over the financial year.

Revenues of the Gallery are sourced primarily from the Queensland Government appropriation (\$17.545 million), also known as Government Contributions.

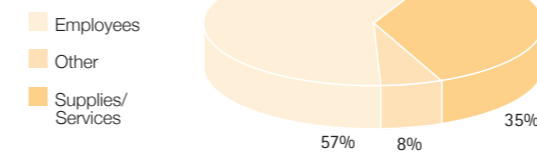
The other major sources of funds in 2004-05 include self-generated funds from the operation of commercial activities, e.g. Gallery Store and donations and bequests through the Queensland Art Gallery Foundation.

The key expenses for the Gallery are employees' salaries and entitlements and purchases of supplies and services for exhibition program related activities including facilities management costs.

REVENUE 2004-05



EXPENSES 2004-05



STATEMENT OF FINANCIAL POSITION

The Statement of Financial Position measures the value of assets, liabilities and equity of the Gallery as at 30 June 2005.

The revaluation of non-current physical assets was undertaken in the financial year, resulting in an increase in the value of the Art Collection by \$5.641 million. Revaluation of the Gallery's Research Library Materials resulted in a decrease of \$0.325 million.

The main increase in current liabilities is due to increased staff numbers resulting in increased provision for employee entitlements.

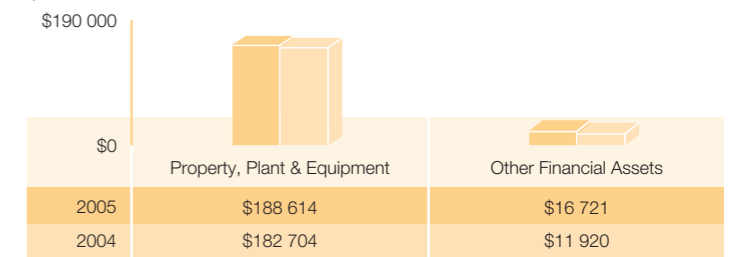
STATEMENT OF CASH FLOWS

The Statement of Cash Flows measures the inflows and outflows of cash through the year, and classifies those transactions into operating, investing or financing activities.

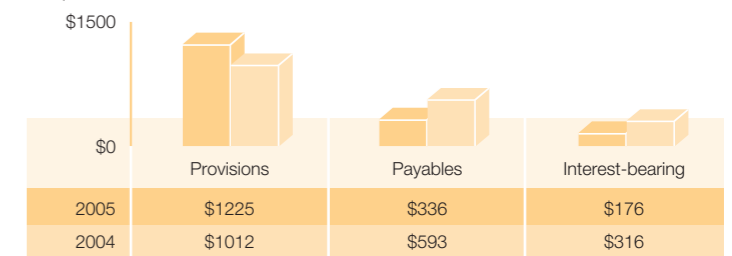
Cash flow in the Gallery is generated primarily from operating activities, where the significant inflows include revenue from Government Contributions and self-generated funds and donations to the Foundation.

Significant outflows are employees' salaries and entitlements and purchases of supplies and services for exhibition program related activities including facilities management costs.

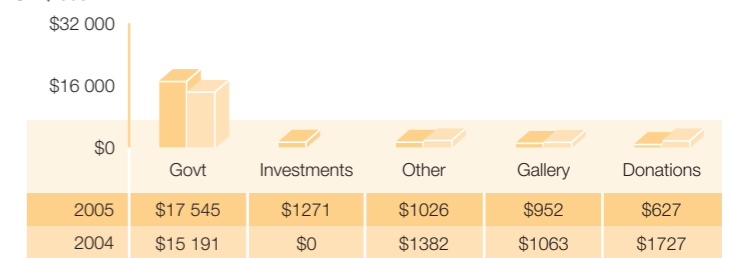
ASSETS \$'000



LIABILITIES \$'000



REVENUE \$'000



EXPENSES \$'000

