

APPENDIXES

ORGANISATIONAL PURPOSE AND RESPONSIBILITIES

ACT AND BOARD OF TRUSTEES

The Queensland Art Gallery Board of Trustees is the governing body of the Queensland Art Gallery and draws its powers from the *Queensland Art Gallery Act 1987*. The Act provides that the Board is to consist of the number of members appointed by the Governor-in-Council. Trustees are appointed for a term of not more than five years, and are eligible for reappointment as Trustees at the expiration of their respective terms.

During the 2003–04 year, the Board met on eight occasions.

FUNCTIONS OF THE BOARD

- (a) to control, manage and maintain the Art Gallery and each branch thereof and all property in the possession of the Board; and
- (b) to minister to the needs of the community in any or all branches of the visual arts by
 - (i) displaying works of art; and
 - (ii) promoting artistic taste and achievement through the illustration of the history and development of the visual arts; and
 - (iii) promoting and providing lectures, films, broadcasts, telecasts, publications and other educational or cultural instruction or material; and
 - (iv) promoting research; and
- (c) to control and manage all land and premises vested in or placed under the control of the Board; and
- (d) to restore and repair works of art in the possession of the Board; and
- (e) to frame and package, and manufacture display materials for, works of art in the possession of the Board; and
- (f) to encourage artistic achievements by artists resident in Queensland; and
- (g) to perform the functions given to the Board under another Act; and
- (h) to perform functions that are incidental, complementary or helpful to, or likely to enhance the effective and efficient performance of, the functions mentioned in paragraphs (a) to (g); and
- (i) to perform functions of the type to which paragraph (h) applies and which are given to the Board in writing by the Minister.

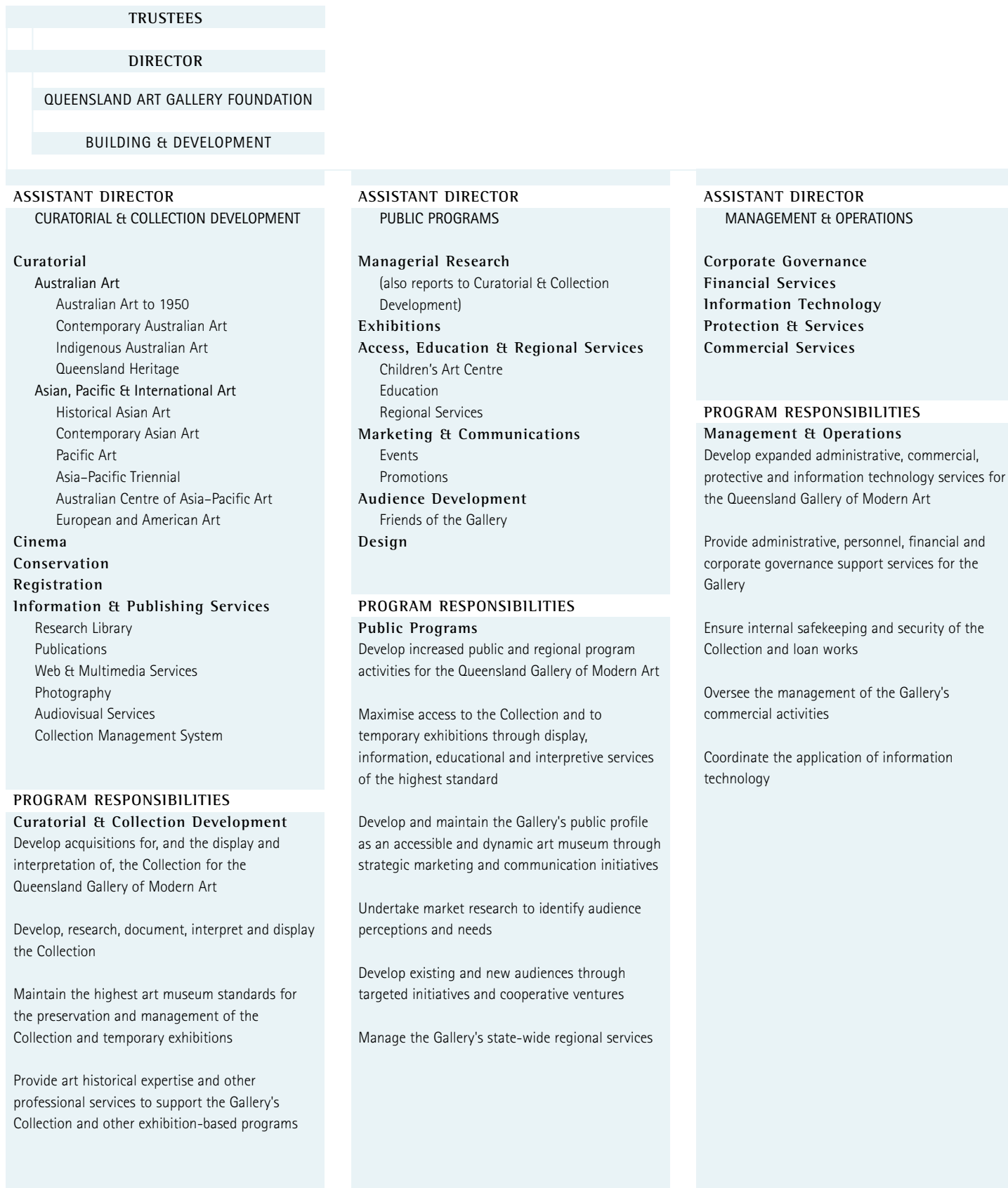
MINISTERIAL DIRECTIONS

The Minister for the Arts gave no directions to the Board of Trustees during the year.

POWERS OF THE BOARD

- (1) For performing its functions, the Board has all the powers of an individual and may, for example:
 - (a) enter into arrangements, agreements, contracts and deeds; and
 - (b) acquire, hold, deal with, and dispose of, property; and
 - (c) engage consultants; and
 - (d) appoint agents and attorneys; and
 - (e) charge, and fix terms, for goods, services, facilities and information supplied by it; and
 - (f) do anything else necessary or desirable to be done in performing its functions.
- (2) Without limiting subsection (1), the Board has the powers given to it under this or another Act.
- (3) The Board may exercise its powers inside and outside Queensland, including outside Australia.
- (4) In this section — 'power' includes legal capacity.

PROGRAM STRUCTURE



STRATEGIC DIRECTION

VISION

Increased quality of life for all Queenslanders through enhanced access, understanding and enjoyment of the visual arts and furtherance of Queensland's reputation as a culturally dynamic state.

MISSION

To be the focus for the visual arts in Queensland and a dynamic and accessible art museum of international standing.

Key Strategic Directions

- + Enhancement of the Gallery's profile through greater emphasis on its Collection, art of the Asia-Pacific area, an increased focus on children and youth programs, and tours of exhibitions and education programs to regional Queensland centres.
- + Improvement of access to the state's visual arts collection and related information and programs to all Queenslanders through the use of technology.

KEY PRIORITIES AND INITIATIVES

- + Continue to promote and present the Gallery as a centre of international standing specifically in the areas of visual arts practice and audience engagement with the visual arts.
- + Continue to develop exhibition, education and interpretive programs for people of all ages.
- + Attract new audiences through a range of innovative and diverse programs.
- + Improve access to the Collection and related visual arts information irrespective of where people live in Queensland.
- + Present a range of exhibitions drawn from the Collection.
- + Present a wide-ranging program of exhibitions from other national and international institutions.
- + Collect and exhibit Australian and international art including the art of Aboriginal and Torres Strait Islander peoples and the art of the Asia-Pacific region.
- + Promote and market the Gallery as a major cultural tourism attraction.
- + Increase scholarly research into the Collection and broaden dissemination of research results through a variety of media.
- + Develop and enhance access to the state's visual arts collection and related programs for all Queenslanders through new technology.
- + Expand and enhance the Gallery's services to regional and remote Queensland through exhibitions, educational services, professional development and consultancies.
- + Improve returns from existing sources of self-generated funds and develop new sources, both commercial and fundraising.
- + Maximise the Gallery's contribution to Government outcomes and priorities through appropriate planning and development of the Queensland Gallery of Modern Art and the refurbishment of the existing Gallery.

GOALS

The Gallery focused on the following goals to ensure its contribution to the attainment of the Government's policy priorities (see p.32). These goals will remain current for the Gallery's Strategic Plan covering the next five-year planning cycle, 2004-09:

- + Develop, manage and conserve the Collection to the highest art museum standards for the benefit and enjoyment of present and future users.
- + Display and promote the Collection and the Gallery's facilities, and provide access to exhibitions, educational services and interpretive programs of excellence to a diversity of cultures and publics with particular attention to the principles of lifelong learning.
- + Develop and manage an exhibitions program to the highest art museum standards, which extends to regional and remote Queensland, for the benefit and enjoyment of present and future audiences.
- + Ensure the Gallery's building and strategic development, including the Queensland Gallery of Modern Art project, meets the needs of the community and the Gallery.
- + Provide assistance and encouragement to young emerging artists and professional development and employment opportunities for young persons seeking a career in the visual arts.
- + Continue to develop an organisational culture that articulates best practice throughout the Gallery's operations.
- + Develop, where appropriate, productive partnerships with other Government agencies and with the private, education and community sectors.

The following additional goals have been included in the 2004-09 Strategic Plan:

- + Continue to develop services to regional areas in order to support such communities in the development of their unique cultural assets and distinctive identities, while also benefiting from cultural exchange with such regions.
- + Provide museum professionals and Queensland Art Gallery staff with opportunities for professional development, so as to create a community of highly-skilled and educated people.

OPERATIONAL PLAN

The Gallery's Operational Plan underpins its Strategic Plan 2003–08. It documents the major activities undertaken during the 12-month period from 1 July 2003 to 30 June 2004, as identified in the Strategic Plan.

COLLECTION

The Gallery's Collection currently consists of 11 715 works of art. Works are acquired each year in accordance with the following priorities in the Collection Development Policy endorsed by Trustees:

- + Acquire works of art to build, refine and enhance the Collection.
- + Manage the display of the Collection to provide maximum access through permanent displays and regular rotations.
- + Implement a schedule of Collection-based displays and activities that reflects Collection strengths and developments, including tours through regional Queensland.
- + Maintain a strategic focus on works by Queensland-born or Queensland-based artists, and on art of relevance to Queensland's social and cultural diversity.
- + Pursue a leadership role in the acquisition of contemporary art of the Asia–Pacific region.
- + Provide and maintain complete and accurate information on the Collection and objects in the temporary custody of the Gallery.
- + Provide and maintain a level of physical safety for the Collection consistent with current international museum standards.
- + Establish and implement appropriate practices and standards for the conservation of the Collection.

INITIATIVES AND SERVICES

- + Continue to foster research into the Collection and communicate the results through interpretive programs for a diversity of audiences.
- + Continue to develop and implement integrated public education programs to support the Collection and exhibitions.
- + Investigate and implement enhanced public access to the Collection and the innovative delivery of education and information services to Queensland including the development and enhancement of the Gallery's website.
- + Organise and present exhibitions at the Queensland Art Gallery.
- + Develop, coordinate and tour exhibitions to regional Queensland.
- + Continue to advise and consult with the education sector in urban and regional Queensland.
- + Continue to develop a leading research facility to foster research into, and the development of, the Asia–Pacific collection and major exhibitions/projects.
- + Continue to provide consultancy services and professional support to local government-funded regional galleries.
- + Continue to provide professional development opportunities for arts workers in regional Queensland.
- + Continue to support Gallery touring exhibitions with a range of related education and information resources and programs.

EXHIBITIONS AND AUDIENCES

- + Organise and present exhibitions at the Queensland Art Gallery.
- + Develop, coordinate and tour exhibitions to regional Queensland.
- + Develop, coordinate and tour exhibitions that showcase the work of regional Queensland artists.
- + Continue to develop collaborative and consultative procedures for developing exhibitions and supporting programs to travel to regional Queensland.

QUEENSLAND GALLERY OF MODERN ART

- + Contribute to the master plan for the Millennium Arts at the Queensland Cultural Centre (MA-QCC) Project.
- + Refine the functional brief for the Queensland Gallery of Modern Art.
- + Coordinate planning for developing the programming for the Queensland Gallery of Modern Art.
- + Develop community liaison activities addressing the Queensland Gallery of Modern Art.
- + Consult with regional Queensland communities and arts organisations throughout the development of the Queensland Gallery of Modern Art.
- + Continue the design process for the Queensland Gallery of Modern Art.
- + Promote the Queensland Gallery of Modern Art as a key component of the Gallery's development strategy.

PROGRAMS OF ASSISTANCE

- + Conduct annual awarding of scholarships and bursaries.
- + Continue youth training and apprenticeship program.

ORGANISATIONAL CULTURE

- + Facilitate ongoing series of inter-section workshops to ensure collaborative interaction.
- + Undertake debriefings and evaluations and communicate outcomes to staff.
- + Identify and support training and professional development opportunities for staff.
- + Implement strategies contained in the Equal Employment Opportunity Plan.
- + Implement Change Management Program for staff in preparation for transition to a two-site organisation.

MEETING THE GOVERNMENT'S POLICY PRIORITIES

Relationship between the Gallery's goals and outputs and the Government's policy priorities

The Queensland Art Gallery, together with the Queensland Gallery of Modern Art, deliver the output, 'Access to the Visual Arts (Queensland Art Gallery)', and contribute to four of the Government's five priorities as indicated below.

GOVERNMENT PRIORITIES

QUEENSLAND ART GALLERY / QUEENSLAND GALLERY OF MODERN ART PRIORITY OUTPUTS

COMMUNITY ENGAGEMENT AND A BETTER QUALITY OF LIFE

- | | |
|--|--|
| <ul style="list-style-type: none"> + Building and enriching Queensland's arts and cultural life. + Services and facilities that promote equitable and active participation by all Queenslanders. + Reconciliation with Indigenous Queenslanders progressed. | <ul style="list-style-type: none"> + Continue to preserve, document and build the art collection in order to promote enhanced understanding and recognition of Queensland's cultural heritage. + Provide enhanced, accessible and innovative programs, products and services for all Queenslanders. + Promote reconciliation with Indigenous Queenslanders through programs, services and consultative processes. + Ensure the cultural maintenance of Indigenous art works and follow appropriate protocols for management and display. |
|--|--|

MORE JOBS FOR QUEENSLAND – SKILLS AND INNOVATION – THE SMART STATE

- | | |
|--|---|
| <ul style="list-style-type: none"> + General educational standards raised, with a focus on whole-of-life skills. + A highly skilled and adaptable workforce which meets current and future needs. + Innovation and flexibility by industry and Government to strengthen Queensland's position in the information age. + Business and industry assisted to create secure sustainable jobs. + A growing, knowledge-intensive and value-adding business and industry base. | <ul style="list-style-type: none"> + Develop education programs for children, youth, adults and mature adults with an emphasis on the principles of lifelong learning. + Develop a highly skilled, adaptable workforce, with an emphasis on providing opportunities for artists, scholars, educators, curators and young museum professionals. + Utilise digital and other innovative technologies to improve knowledge of, and access to, the art collection and to Gallery programs and services. + Provide opportunities for skills enhancement and professional development to colleagues in regional Queensland. + Create an expanded, sustained workforce to meet the product and service delivery needs to the new 'two-site, one vision' institution. + Attract local, national and international visitors to Brisbane and regional centres, thus adding value to them as destinations. + Provide educational, cultural and knowledge products and services to the people of Queensland. |
|--|---|

BUILDING QUEENSLAND'S REGIONS

- | | |
|---|---|
| <ul style="list-style-type: none"> + Infrastructure to support regional economic and social development. + Improved liveability of cities, towns, regions and remote communities. | <ul style="list-style-type: none"> + Utilise partnerships and alliances to create professional and social development opportunities in regional Queensland. + Contribute to the liveability of cities, towns, regions and remote communities through the provision of greatly increased cultural products and services. |
|---|---|

SAFER MORE SUPPORTIVE COMMUNITIES

- | | |
|---|---|
| <ul style="list-style-type: none"> + A community in which diversity is valued. | <ul style="list-style-type: none"> + Provide enhanced programs, products and services that value and raise community appreciation of diversity through cultural knowledge and awareness. |
|---|---|

OUTPUT / PERFORMANCE STATEMENT 2003-04

MEASURES	PUBLISHED TARGETS (as per MPS*)	ACTUAL ACHIEVEMENT To 30 June 2004
Quantity		
Number of exhibitions presented	9	21
Number of Collection-based exhibitions presented	3	12
Number of exhibitions touring regional Queensland	2	2
Total attendance at Queensland Art Gallery	300 000	404 412
Number of internships/traineeships	6	4
Quality		
Level of satisfaction of audiences with Collection-based displays, programs and activities	80%	77%
Increase in loan requests and requests for reproductions from the Collection from external agencies	10%	9%
Collection stored safely and securely to international museum standards	100%	93%
Extent of client satisfaction with exhibition program	80%	83%
Number of trainees/apprentices completing traineeships	100%	100%
Location		
Travelling exhibitions through regional Queensland	2	2
Number of regional locations receiving travelling exhibitions and education, interpretive and information services	15	18
* Ministerial Program Statement		

COLLECTION ACQUISITIONS

DONORS

Donations and Gifts through the Queensland Art Gallery Foundation

Ah Xian
Anonymous donor
Philip Bacon, AM
Michael Simcha Baevski
Andrew Baker
Peter Bellas
Geoffrey Brown
Corrs Chambers Westgarth
Peter Fay
Simryn Gill
Susan Golledge
Ailsa Handicott
John Potter Pty Ltd
Anthony and Beverly Knight
Nigel Lendon
Dr Morris Low
Danie Mellor
Bill Menzies
Dr Cathryn J. Mittelheuser, AM, and
Margaret Mittelheuser, AM
Max Phillips
Barbara Reye
Tom Shapcott
Christopher Simon
James C. Sourris
The Thomas Foundation
Wellington and Virginia Yee

CULTURAL GIFTS PROGRAM

Ah Xian
Philip Bacon, AM
Peter Bellas
Geoffrey Brown
Peter Fay
Simryn Gill
Susan Golledge
Nigel Lendon
Dr Morris Low
Bill Menzies
Max Phillips
Barbara Reye
Tom Shapcott

PURCHASED THROUGH TRUSTS AND FUNDS

Andrew and Lilian Pedersen Trust
Friends of the Queensland Art Gallery
Queensland Art Gallery Foundation Appeal
Queensland Government's Queensland
Gallery of Modern Art Acquisitions
Fund
Queensland Government's special
Centenary Fund

GIFTS AND PURCHASES

AH KEE, Vernon
Australia b.1967
(Kuku Yalanji/Waanyi/Yidinyji/Guugu
Yimithirr language groups)
This man is... This woman is... 2003
Inkjet on polypropylene, satin laminated
60 panels: 29.5 x 21 x 0.5cm (each)
Acc. 2003.145a-hhh
Purchased 2003.
Queensland Art Gallery Foundation

Ah XIAN
China/Australia b.1960
*Human human – landscape carved lacquer
bust 5* 2000–01
Lacquer carved relief on resin fibreglass
46 x 45.5 x 27.3cm
Acc. 2004.131
Gift of the artist through the Queensland
Art Gallery Foundation 2004

ATKINSON, Alfred
Australia 1867–1950
North Queensland natives c.1890s
Albumen photograph
10.4 x 14.1cm (comp.)
Acc. 2003.178.024
Purchased 2003.
Queensland Art Gallery Foundation

BAYPUNGALA, Judy
Australia b.1941
(Wurlaki language group)
Mindirr (Basket) 2003
Twined pandanus palm leaf, natural dyes
and bark string
39.5 x 23.5cm

Mindirr (Basket) 2003
Twined pandanus palm leaf, natural dyes
and bark string
38.5 x 24cm

Mindirr (Basket) 2003
Twined pandanus palm leaf, natural dyes
and bark string
35 x 23.5cm

Mindirr (Basket) 2003
Twined pandanus palm leaf, natural dyes
and bark string
31.5 x 19cm

Circular mat 2003
Twined pandanus palm leaf, natural dyes
205cm (diam.)
Acc. 2004.085–089
Purchased 2004.
Queensland Art Gallery Foundation Grant

BENNING, Sadie
United States b.1973
Aerobicide 1998
Betacam SP: 3:10 minutes, colour, sound
Acc. 2004.109
Purchased 2004

BISMUTH, Pierre
France b.1963
The party 2001
Betacam SP: 100:18 minutes, colour,
stereo
Acc. 2004.113
Purchased 2004

BLACK, Dorrit
Australia 1891–1951
Near my studio c.1951
Pastel
37.8 x 50cm (comp., sight)
Acc. 2004.003
Gift of Tom Shapcott through the
Queensland Art Gallery Foundation 2004

BULUNBULUN, John
Australia b.1946
(Ganalbingu language group)
Bakarra (Sacred stones) 2003
Natural pigments on bark
139 x 78cm

Body design – wind 2002
Natural pigments on bark
96.5 x 36cm

Lorrkon (Hollow log) 2003
Wood with natural pigments
353 x 22cm (diam., irreg.)
Acc. 2003.146–148
Purchased 2003.
Queensland Art Gallery Foundation

BUNNY, Rupert
Australia/France 1864–1947
Horses in the sea c.1905
Monotype
24 x 30.5cm (comp.)
Acc. 2003.192
Gift of Dr Morris Low through the
Queensland Art Gallery Foundation 2003

BURRA BURRA, Djambu
Australia b.1937
(Rittharrngu language group)
Devil devil 2000
Synthetic polymer paint on canvas
137.1 x 85.6cm

Devil devil 1998
Carved wood with synthetic polymer paint
150 x 30 x 20cm (with base)
Acc. 2003.195–196
Gift of Nigel Lendon through the
Queensland Art Gallery Foundation 2003

CARLTON, Paddy
Australia b.(c.)1920
(Gajirrawoong/Miriwoong language
groups)
Untitled c.1996
Natural pigments on canvas
100 x 140cm
Acc. 2003.149
Purchased 2003.
Queensland Art Gallery Foundation

COKES, Tony
United States b.1956
2@ 2000
Betacam SP: 6 minutes, colour, sound
3# 2001
Betacam SP: 4:28 minutes, colour, sound

6^ 2001
Betacam SP: 4:33 minutes, colour, sound
5% 2003
Betacam SP: 10 minutes, colour, sound
Purchased 2004

CULLEN, Adam
Australia b.1965
Gaal sex 1999
Synthetic polymer paint on canvas
183 x 152cm
Acc. 2004.005
Gift of Peter Fay through the Queensland
Art Gallery Foundation 2004

DATJINY, Peter
Australia b.1946
(Gumatj language group)
Fire story 2000–01
Natural pigments on bark
120.5 x 59.5cm
Acc. 2003.197
Gift of Nigel Lendon through the
Queensland Art Gallery Foundation 2003

DJULWARAK, Dawidi 2
Australia 1921–70
(Liyagalawumirr/Walkurwalkur language
groups)
*Wititj ga warngurra' ga girri (Olive python
with bandicoot and tools)* 1964
Natural pigments on bark
84 x 46cm
Acc. 2003.198
Gift of Nigel Lendon through the
Queensland Art Gallery Foundation 2003

DJUMBURPUR, Tom
Australia b.1920
(Djenba/Wudamin language groups)
Landscape at Djilpin 1983
Natural pigments on bark
77 x 61.5cm

Wititj (Olive pythons) 1983
Natural pigments on bark
117.5 x 50cm

*Wititj and Bulukmin (Pythons and file
snake)* 1983
Natural pigments on bark
109 x 45.5cm
Acc. 2003.199–201
Gift of Geoffrey Brown through the
Queensland Art Gallery Foundation 2003

DJUTARRA, Elizabeth
Australia b.1942
(Ganalbingu language group)
Collection mat 2003
Twined pandanus palm leaf
170 x 232cm

from top:
Liu Jianhua
China b.1962
Obsessive memories 2002
Porcelain, modelled and with overglaze
colours, incised
54 x 33 x 37cm
Purchased 2004.
Queensland Art Gallery Foundation

Yoshifuji Utagawa
Japan 1828-87
(Album of prints) (detail) c.1867-91
Colour woodblock prints
Album: 35.5 x 23.5 x 3.5cm (closed);
20 triptychs: 35.5 x 23.5cm (each panel,
comp., oban)
Gift of Barbara Reye through the Queensland
Art Gallery Foundation 2003



- DJUTARRA, Elizabeth**
Australia b.1942
(Ganalbingu language group)
String chest harness 2003
Goose feathers, kapok and banyan string
39cm (length)
- String chest harness* 2003
Goose feathers, kapok and banyan string
41cm (length)
- String chest harness* 2003
Goose feathers, kapok and banyan string
41.5cm (length)
Acc. 2004.090–093
Purchased 2004.
Queensland Art Gallery Foundation Grant
- DUNBAR, Frances**
Australia 1899–1989
Vase 1932
Earthenware, hand built with carved
decoration and running mulberry, blue and
green glazes
23.5 x 15cm (diam.)
Acc. 2003.193
Gift of Max Phillips in memory of Des and
Valma Burton through the Queensland Art
Gallery Foundation 2003
- DUPAIN, Max**
Australia 1911–92
Jean with wire mesh 1936, printed c.1972
Gelatin silver photograph
49.8 x 35.6cm (comp., sight)
Purchased 2004
- ENTATA, Irene**
Australia b.1946
(Arrernte (Aranda)/Luritja language groups)
Albert and Rex painting 2003
Synthetic polymer paint on linen
90 x 120.5cm
Acc. 2003.150
Purchased 2003.
Queensland Art Gallery Foundation
- ENTATA, Irene (potter)**
Australia b.1946
(Arrernte (Aranda)/Luritja language groups)
HERMANSBURG POTTERS (pottery
workshop)
Australia est. 1990
Footy (Lions vs Bombers) 2004
Earthenware, hand-built terracotta with
underglaze colours and applied decoration
40 x 25cm (diam., complete)
Acc. 2004.144a–b
Purchased 2004
- FOLEY, Fiona**
Australia b.1964
(Badtjala language group)
Samsara I 2003
Aquatint on Hahnemühle paper, ed. 4/24
34 x 21.6cm (comp.)
- Samsara II* 2003
Aquatint on Hahnemühle paper, ed. 4/24
34 x 21.6cm (comp.)
Acc. 2003.151–152
Purchased 2003.
Queensland Art Gallery Foundation
- Samsara III* 2003
Aquatint on Hahnemühle paper, ed. 4/24
30.5 x 21.5cm (comp.)
- Samsara IV* 2003
Aquatint on Hahnemühle paper, ed. 4/24
30.5 x 22cm (comp.)
Acc. 2004.011–012
Gift of Andrew Baker through the
Queensland Art Gallery Foundation 2004
- Samsara V* 2003
Aquatint on Hahnemühle paper, ed. 4/24
34 x 21.6cm (comp.)
- Samsara VI* 2003
Aquatint on Hahnemühle paper, ed. 4/24
34 x 21.6cm (comp.)
Acc. 2003.153–154
Purchased 2003.
Queensland Art Gallery Foundation
- Samsara VII* 2003
Aquatint on Hahnemühle paper, ed. 4/24
31.4 x 21cm (comp.)
Acc. 2004.013
Gift of Andrew Baker through the
Queensland Art Gallery Foundation 2004
- Native blood* 1994
Hand-coloured gelatin silver photograph
41.5 x 51cm (comp.)
Acc. 2003.155
Purchased 2003.
Queensland Art Gallery Foundation
- FUSIMALOHI, Kieti**
Tonga
Kie Tonga (Mat) c.1997
Woven pandanus and wool
156.5 x 212cm (irreg.)
Acc. 2004.028
Purchased 2004
- GANAMBARR, Larrtjanga**
Australia c.1932–2000
(Ngaymil/Dathiwuy language groups)
Balirlira and the Macassans c.1958
Natural pigments on bark
158 x 64.5cm
Acc. 2003.139
Purchased 2003 with funds from the
Queensland Art Gallery Foundation Appeal
and the Queensland Art Gallery
Foundation Grant
- GILL, Simryn**
Malaysia b.1959
Pooja/Loot 1992
Found objects in books
60 components ranging from 15.5 x 11
x 2cm to 23 x 35.6 x 4.5cm
Acc. 2003.177a–hhh
Gift of the artist through the Queensland
Art Gallery Foundation 2003
- GONDORRA STEELE, Tommy**
Australia b.1940
(Burarra language group)
Jirrcha (Waterlily root) 2002
Natural pigments on bark
165.5 x 45.5cm
Acc. 2004.112
Purchased 2004
- GORDON, Tulo**
Australia 1918–89
(Guugu Yimithirr language group)
(The two Dugul sisters) c.1960s
Natural pigments on bark
32 x 68cm
- (Moon story)* c.1960s
Natural pigments on bark
31 x 62.5cm
- Gabul the carpet snake and Diimuur*
c.1960s
Natural pigments on bark
33 x 66.5cm
- (Kangaroo hunt)* c.1960s
Natural pigments on bark
32 x 64cm
Acc. 2004.081–084
Purchased 2004 with funds from the
Queensland Art Gallery Foundation Appeal
and the Queensland Art Gallery
Foundation
- GUDTHAYKUDTHAY, Philip**
Australia b.1935
(Liyagalawumirri/Walkurwalkur language
groups)
Badurru in Gunyungmirringa landscape
no. 6 1983
Natural pigments on bark
98 x 36.5cm
Acc. 2003.202
Gift of Geoffrey Brown through the
Queensland Art Gallery Foundation 2003
- Warralawarrala man and Wititj (Olive
python)* 1997
Natural pigments on bark
120.5 x 59.6cm
Acc. 2003.203
Gift of Nigel Lendon through the
Queensland Art Gallery Foundation 2003
- Badurru in Gunyungmirringa landscape*
no. 2 1983
Natural pigments on bark
95.5 x 49.5cm
Acc. 2004.041
Purchased 2004.
Queensland Art Gallery Foundation
- attrib. to HOPEVALE COMMUNITY
Australia
(Guugu Yimithirr language group)
(Rainforest shield) c.1960s
Natural pigments on bark
99 x 43cm
- (Two lizards)* c.1960s
Natural pigments on bark
45 x 94cm
- (Bunydyul) (Fried-neck lizard)* c.1960s
Natural pigments on bark
44 x 95cm
- (Ganhaarr) (Crocodile)* c.1960s
Natural pigments on bark
105 x 44.5cm
- (Catfish)* c.1960s
Natural pigments on bark
32 x 64cm
- (Ganhaarr and gabul) (Crocodile and
carpet snake)* c.1960s
Natural pigments on bark
64 x 30.5cm
- (Cross boomerang and axe)* c.1960s
Natural pigments on bark
44 x 28.5cm
- (Dugong and fish)* c.1960s
Natural pigments on bark
31 x 63cm
- (Turtle)* c.1960s
Natural pigments on bark
43 x 23.5cm
- (Abstract form)* c.1960s
Natural pigments on bark
32.5 x 19.5cm
- (Ganhaarr (crocodile) and shark)* c.1960s
Natural pigments on bark
22.5 x 33cm
- (Two turtles)* c.1960s
Natural pigments on bark
17 x 26cm
- (Man, snake and tree)* c.1960s
Natural pigments on bark
27 x 20.5cm
- (Shield and stick)* c.1960s
Natural pigments on bark
23.5 x 36cm
- (Fish)* c.1960s
Natural pigments on bark
23 x 32cm

- (Canoe and spirits)* c.1960s
Natural pigments on bark
32.5 x 31cm
Acc. 2004.065–080
Purchased 2004 with funds from the Queensland Art Gallery Foundation Appeal and the Queensland Art Gallery Foundation
- IKITULE, Nofo**
Niue Island b.1932
Lei 2004
Folded curling ribbon, cotton thread
73.8 (long) x 9.8cm (diam.)
Acc. 2004.148
Purchased 2004.
The Queensland Government's Queensland Gallery of Modern Art Acquisitions Fund
- INKAMALA, Judith** (potter)
Australia b.1948
(Arrernte (Aranda) language group)
HERMANNSBURG POTTERS (pottery workshop)
Australia est. 1990
Enalaunga family 2004
Earthenware, hand-built terracotta with underglaze colours and applied decoration
43 x 34cm (diam., complete)
Acc. 2004.145a–b
Purchased 2004
- JONES, Art**
United States b.1965
Love songs #1 2001
Betacam SP: 12 minutes, colour, sound
Purchased 2004
- KAABI, Susana**
Tonga b.1920
Fala pati (Mat) 1988
Woven pandanus and wool
237 x 178.5cm (irreg., including fringes)
Acc. 2004.030
Purchased 2004
- KADDY, Rebecca**
Australia b.(c.)1933
(Meriam Mir language group)
Totwam (Fan) 2003
Woven raffia over coconut midrib with commercially dyed feathers
30 x 34 x 9.8cm
- Totwam (Fan)* 2003
Woven wool over coconut midrib with commercially dyed feathers
35 x 27.5 x 9cm
Acc. 2003.189–190
Purchased 2003
- KAIKA, Nurpya**
Australia b.1940
(Pitjantjatjara language group)
Basket 2003
Grass, raffia, emu feathers, rabbit fur
19 x 42cm (diam.) (excluding feathers)
Acc. 2004.064
Purchased 2004
- KANEKO, Jun**
Japan/United States b.1942
Clear, blue, yellow and red slabs 2001
Kiln-formed glass (colourless and three primary colours)
Four components: 198.5 x 49.5 x 5.1cm (each)
Acc. 2004.001a–d
Purchased 2004 with funds from the Thomas Foundation through the Queensland Art Gallery Foundation
- KENTRIDGE, William**
South Africa b.1955
Zeno writing (portfolio) 2002
Photogravure with drypoint and burnishing on Hahnemühle paper, ed. 11/40
Nine sheets: 21.5 x 27cm (comp., each)
Acc. 2004.104.001–009
Purchased 2004.
Andrew and Lilian Pedersen Trust
- Zeno writing* 2002
Betacam SP and DVD: 11 minutes, black and white, stereo
Purchased 2004 with funds from James C. Sourris through and with the assistance of the Queensland Art Gallery Foundation
- KHALID, Aisha**
Pakistan b.1972
Coming up next 2001
Gouache on wasli paper
24.6 x 31.4cm (comp.)
- Birth of venus* 2003
Gouache on wasli paper
28 x 28.1cm (comp.)
- Exotic bodies* 2003
Gouache on wasli paper
20 x 33.7cm (comp.)
- Ongoing conversation* 2003–04
Gouache on wasli paper
23.1 x 24.9cm (comp.)
- Visible/invisible* 2003
Gouache on wasli paper
18.1 x 24.3cm (comp.)
- Visible/invisible* 2003
Gouache on wasli paper
29 x 24.6cm (comp.)
Acc. 2004.117–122
Purchased 2004.
Queensland Art Gallery Foundation Grant
- KNGWARREYE, Emily Kame**
Australia c.1910–96
(Anmatyerre language group)
Textile length c.1989
Silk length decorated in the batik technique
262 x 89cm
Acc. 2003.191
Purchased 2003.
Queensland Art Gallery Foundation Grant
- KOOMEETA, Craig**
Australia b.1977
(Wik-Alkan language group)
Thuuth (Striped protector and storyteller wearing grass skirt) 2004
Carved milkwood with synthetic polymer paint, natural pigments, ibis feathers and natural fibres
180 x 63 x 14.5cm
- Freshwater shark with mullet in mouth* 2004
Carved milkwood with synthetic polymer paint and natural pigments
35 x 109 x 47cm
- Thuuth thaa' munth (Law poles)* 2004
Synthetic polymer paint and natural pigments on milkwood
5 components: 130 x 14.5cm (diam.); 120.5 x 17cm (diam.); 115 x 17cm (diam.); 103 x 13.5cm (diam.); 98.5 x 17cm (diam.)
- Wuungkun (Barramundi in Apelech design)* 2004
Carved milkwood with synthetic polymer paint and natural pigments
24.5 x 38 x 12.7cm
- Wuungkun (Barramundi in Apelech design)* 2004
Carved milkwood with synthetic polymer paint and natural pigments
24.5 x 44 x 13cm
Acc. 2004.059–063
Purchased 2004
- LEDUA, Filiti Leya**
Fiji b.1948
Ibe vakabati (Mat) 2003
Woven pandanus and wool
238 x 347.5cm (irreg., including fringe)
Acc. 2004.029
Purchased 2004
- LEE U-fan**
South Korea/Japan b.1936
From point 1979
Oil on canvas
226.5 x 182cm
Acc. 2004.127
The Kenneth and Yasuko Myer Collection of Contemporary Asian Art. Purchased 2004 with funds from Michael Simcha Baevski through the Queensland Art Gallery Foundation
- LISTER, W. Lister**
Australia 1859–1943
(Seascape) c.1920
Watercolour with gouache over pencil
52.7 x 74.6cm (comp., sight)
Acc. 2004.004
Gift of Ailsa Handicott through the Queensland Art Gallery Foundation 2004
- LIU Jianhua**
China b.1962
Obsessive memories 2002
Porcelain, modelled and with overglaze colours, incised
54 x 33 x 37cm
- Obsessive memories* 2002
Porcelain, modelled and with overglaze colours, incised
56.5 x 32.5 x 37.5cm
- Obsessive memories* 2000
Porcelain, modelled and with overglaze colours, incised
47 x 29 x 31cm
Acc. 2004.123–125
Purchased 2004.
Queensland Art Gallery Foundation
- M/M (Paris)**
France est. 1992
(Michael Amzalag b.1968, France and Mathias Augustyniak b.1967, France)
Annlee: No ghost just a shell (A film by Pierre Huyghe and Philippe Parreno) 2000
Three-colour screenprint, ed. of 200
171.8 x 116.8cm
- Annlee in Anzen Zone (A film by Dominique Gonzalez-Foerster)* 2001
Three-colour screenprint, ed. of 200
170.4 x 117.2cm
- Annlee Witness Screen (A film by François Curlet)* 2002
Three-colour screenprint, ed. of 200
171.6 x 116.6cm
- Annlee: Théorie du Trickster (A film by Pierre Joseph and Mehdi Belhaj-Kacem)* 2002
Three-colour screenprint, ed. of 200
169.9 x 116.4cm
Acc. 2004.149–152
Purchased 2004
- MARAWILI, Djambawa**
Australia b.1953
(Madarrpa language group)
Burrut'tji 2002
Natural pigments on bark
150 x 92cm
Acc. 2003.156
Purchased 2003.
Queensland Art Gallery Foundation
- MARIKA, Mawalan**
Australia 1908–67
(Rirratjingu language group)
Djanda (Goanna) c.1960
Natural pigments on bark
49 x 14.5cm
- Jarwolalwal* c.1958
Natural pigments on bark
47.5 x 19.5cm

from top:
Craig Koomeeta
Australia b.1977
(Wik-Alkan language group)
Freshwater shark with mullet in mouth 2004
Carved milkwood with synthetic polymer
paint and natural pigments
35 x 109 x 47cm
Purchased 2004

Minnie Pwerle
Australia b.(c.)1910
(Anmatyerre/Alyawarre language groups)
*Awelye Atnwengerrp (Women's ceremony
from the Atnwengerrp)* 2000
Synthetic polymer paint on cotton canvas
165.8 x 348cm
Purchased 2003.
Queensland Art Gallery Foundation



- MARIKA, Mawalan**
Australia 1908–67
(Rirratjingu language group)
Sacred bush turkey c.1960
Natural pigments on bark
41 x 23.5cm
Acc. 2003.141–143
Purchased 2003 with funds from the Queensland Art Gallery Foundation Appeal and the Queensland Art Gallery Foundation Grant
- MARIKA, Mawalan**
Australia 1908–67
(Rirratjingu language group)
MARIKA, Wandjuk
Australia 1927–87
(Rirratjingu language group)
GANAMBARR, Larrtjanga
Australia c.1932–2000
(Ngaymil language group)
MARIKA, Nurryurrngu
Australia unknown–1979
(Rirratjingu language group)
GANAMBARR, Mowarra
Australia b.(c)1917
(Dathiwuy language group)
GURRUWIWI, Mithinarri
Australia 1929–76
(Galpu language group)
DHAMARRANDJI, Gungguyama
Australia c.1916–70
(Djambarrpuyngu language group)
YUNUPINGU, Munggurruwuy
Australia c.1907–78
(Gumatj language group)
Yalangbara c.1960
Natural pigments on bark
183 x 63cm
Acc. 2003.138
Purchased 2003 with funds from the Queensland Art Gallery Foundation Appeal and the Queensland Art Gallery Foundation Grant
- MAYMURU, Galuma 1**
Australia b.1951
(Manggalili language group)
Wayawu 2002
Natural pigments on bark
224 x 70cm

Ngoykal at Wayawu 2002
Natural pigments on bark
186 x 60cm
Acc. 2003.157–158
Purchased 2003.
Queensland Art Gallery Foundation
- McDINNY, Dinny**
Australia c.1927–2003
(Marnbaliya language group)
Kalajangu – Rainbow dreaming came through Marnbaliya Country 2003
Synthetic polymer paint on canvas
132 x 161.5cm
Acc. 2004.042
Purchased 2004.
Queensland Art Gallery Foundation
- MEEKS, Arone Raymond**
Australia b.1957
(Kuku Midigi language group)
Celebration 2001, printed 2003
Linocut, ed. 9/25
119.5 x 170cm (comp., sight)
Acc. 2004.094
Purchased 2004 with funds from Friends of the Queensland Art Gallery and with the assistance of the Queensland Art Gallery Foundation
- Big wet* 2001
Pen and ink with brush and ink
70 x 46cm (comp.)

Dilly bag 2001
Pen and ink with brush and ink
74 x 46cm (comp.)

The muse 2001
Pen and ink with brush and ink
72 x 48.5cm (comp.)

The waterhole 2001
Pen and ink with brush and ink
69.7 x 53.5cm (comp.)
Acc. 2004.095–098
Purchased 2004.
Queensland Art Gallery Foundation
- MELLOR, Danie**
Australia b.1971
(Mamu/Ngadjonji language groups)
The ranger 2003
Slip-cast, white earthenware, glazed light green with fern motif in white
22.8 x 24.1 x 11.3cm

Sea hund (hound) 2002
Slip-cast, white earthenware, glazed blue shaded to white with abstract design
22.8 x 24.1 x 11.3cm

Wachter dein kultur (Guardian of culture) 2003
Slip-cast, white earthenware, glazed with polychrome abstract design
22.8 x 24.1 x 11.3cm
Acc. 2003.173–175
Gift of the artist through the Queensland Art Gallery Foundation 2003
- MELPI, Leo**
Australia b.1940
(Murrinh-patha language group)
(Dugout wooden canoe) c.1998
Wood with natural pigments
35 x 343.5 x 30cm
Acc. 2004.111
Purchased 2004
- MINYGULULU, Peter**
Australia b.1942
(Djinba/Mandhalpuy language groups)
Mayku (two-headed snake) at Mirngatja 1997
Natural pigments on bark
153 x 74cm
- Mayku (two-headed snake) and fish* 1997
Natural pigments on bark
123.5 x 50cm

Mayku (two-headed snake) 1998
Wood with natural pigments
159.5 x 18cm (diam.)
Acc. 2003.204–206
Gift of Nigel Lendon through the Queensland Art Gallery Foundation 2003
- MOFFATT, Tracey**
Australia b.1960
Nice coloured girls 1987
16mm film and Digital Betacam:
17 minutes, colour, sound

Night cries: a rural tragedy 1989
35mm film and Digital Betacam:
17 minutes, colour, sound

Heaven 1997
Digital Betacam: 28 minutes, colour, sound
Acc. 2004.139–141
Purchased 2004
- NAMATJIRA, Albert**
Australia 1902–59
(Arrente (Aranda) language group)
Mulga plaque (Greetings from South West Patrol) 1932
Pokerwork on wood
18.5 x 49.5 x 1cm (irreg.)
Acc. 2004.014
Gift of Susan Golledge through the Queensland Art Gallery Foundation 2004
- NAPANGARDI, Lily Kelly**
Australia b.1948
(Warlpiri/Luritja language groups)
Sandhills, Kintore area 2003
Synthetic polymer paint on linen
181.4 x 181.6cm
Acc. 2004.115
Purchased 2004 with funds from Dr Cathryn J. Mittelheuser, AM, and Margaret Mittelheuser, AM, through the Queensland Art Gallery Foundation
- NAPURRULA, Mitjili**
Australia b.(c)1945
(Pintupi language group)
Uwalki 2002
Synthetic polymer paint on canvas
183 x 305cm

Uwalki 2002
Synthetic polymer paint on canvas
212.5 x 183cm
Acc. 2003.207–208
Gift of Christopher Simon through the Queensland Art Gallery Foundation 2003
- NEWCRAFT PUBLICITY LIMITED**
Australia
The decorated shields of north Queensland (reproductions) 1967
Folder containing seven photo-screenprints
Folder: 38.5 x 58 x 0.5cm; seven sheets: 38 x 50.5cm (each)
- The cave art and the bark paintings of Australia (reproductions)* 1967
Folder containing five photo-screenprints
Folder: 56.1 x 82 x 0.5cm; five sheets: 55.9 x 80cm (each)
Acc. 2004.015–016
Gift of Anthony and Beverly Knight through the Queensland Art Gallery Foundation 2004
- NEWILI**
Australia c.1910–93
(Marri Ammu language group)
Native dance c.1965
Natural pigments on bark
29 x 63cm
Acc. 2003.144
Purchased 2003 with funds from the Queensland Art Gallery Foundation Appeal and the Queensland Art Gallery Foundation Grant
- NOLAN, Sidney**
Australia/England 1917–92
Dimboola 1942
Pastel
16.5 x 20.9cm (comp.)

Carcase c.1953–55
Ink, fibre-tipped pen and Ripolin enamel on paper
23 x 27.5cm (comp.)

Gold mine and man 1948
Carbon transfer drawing
23.8 x 29.6cm (comp.)

Horse and jockey 1949
Carbon transfer drawing
15.7 x 30.3cm (comp.)

Bottle brush 1949
Carbon transfer drawing
29 x 13.5cm (comp.)

Windmill in drought forms 1955
Fibre-tipped pen
18.7 x 18cm (comp.)

Carcase 1957
Fibre-tipped pen and Ripolin enamel on paper
20.3 x 26.2cm (comp.)

Sketch for Burke and Wills painting c.1948
Carbon transfer drawing
21 x 23cm (comp.)

Mrs Fraser 1966
Water-based fabric dye on paper
25.3 x 30.4cm (comp.)
Acc. 2003.180–188
Purchased 2003.
The Queensland Government's special Centenary Fund

- OROZCO, Gabriel**
Mexico b.1962
Double tail 2003
Polyurethane foam
99.1 x 152.4 x 99.1cm
Acc. 2004.002
Purchased 2004 with funds from an anonymous donor through the Queensland Art Gallery Foundation
- ORSTO, Maria Josette**
Australia b.1962
(Tiwi language group)
Kulama body painting 2002
Natural pigments on canvas
90.5 x 90.5cm
Acc. 2003.160
Purchased 2003.
Queensland Art Gallery Foundation
- PAREKOWHAI, Michael**
New Zealand b.1968
(Maori, Nga-Ariki and Ngati Whakarongo tribal affiliations)
Acts II 1994
Wood with enamel paint
3 components: 284 x 90 x 40cm (each)
Acc. 2004.128a-c
Purchased 2004.
The Queensland Government's Queensland Gallery of Modern Art Acquisitions Fund
- PLATT, Terry**
Australia b.1973
(Kuuku Ya'u/Lama Lama language groups)
Before time 2002
Linocut, ed. 92/100
62 x 43.7cm (comp.)
Acc. 2004.099
Purchased 2004.
Queensland Art Gallery Foundation
- POULSEN, Poul C.**
Australia 1857-1925
Victoria Bridge looking south (showing portion remaining after floods) 1893 (inscr. 1894)
Albumen photograph
19.3 x 24.4cm (comp.)
Acc. 2003.178.002
Purchased 2003.
Queensland Art Gallery Foundation
- Queensland railway track - local* c.1890
Albumen photograph
19.3 x 24.2cm (comp.)
- Old Indooroopilly Bridge - prior to Great Flood* c.1890
Albumen photograph
19.3 x 24.5cm (comp.)
Acc. 2003.178.007-008
Purchased 2003.
Queensland Art Gallery Foundation
- POUTASI, Laupule**
Samoa b.1912
LUAFUTU, Tusi
Samoa b.1951
Fala su'i (Mat) c.1984
Woven pandanus and wool
140.5 x 206.5cm (irreg.)
Acc. 2004.027
Purchased 2004
- PRESTON, Margaret**
Australia 1875-1963
Black swans, Wallis Lake, NSW 1923
Woodblock print on thin Japanese paper, ed. 14/50
19.2 x 27.5cm (comp.)
Acc. 2003.179
Purchased 2003.
Queensland Art Gallery Foundation Grant
- PULE, John**
New Zealand b.1962
Kulukakina (after experiencing something miraculous, withdraw) 2004
Oil and ink on canvas
200 x 180cm
Acc. 2004.129
Purchased 2004.
The Queensland Government's Queensland Gallery of Modern Art Acquisitions Fund
- PUSHPAMALA N**
India b.1956
The Navarasa suite from the 'Bombay Photo Studio' series 2000-03
Gelatin silver photographs, sepia-toned, ed. 3/10
Three sheets: 50.8 x 67cm (comp., approx.); six sheets: 66.6 x 51cm (comp., approx.)
Acc. 2004.126.001-009
Purchased 2004.
The Queensland Government's Queensland Gallery of Modern Art Acquisitions Fund
- PWERLE, Minnie**
Australia b.(c.)1910
(Anmatyerre/Alyawarre language groups)
Awelye Atnwengerrp (Women's ceremony from the Atnwengerrp) 2000
Synthetic polymer paint on cotton canvas
165.8 x 348cm
Acc. 2003.162
Purchased 2003.
Queensland Art Gallery Foundation
- QIU Zhijie**
China b.1969
Landscape 1999
Mini DV: 8:40 minutes, colour, stereo
See you again, see you again 1996-2003
Mini DV: 10:30 minutes, colour, stereo
Acc. 2004.142-143
Purchased 2004.
Queensland Art Gallery Foundation Grant
- RIST, Pipilotti**
Switzerland b.1962
I'm not the girl who misses much 1986
Betacam SP: 5 minutes, colour, sound
You called me Jacky 1990
Betacam SP: 4 minutes, colour, sound
I'm a victim of this song 1995
Betacam SP: 4:30 minutes, colour, sound
Acc. 2004.105-107
Purchased 2004
- RONDINONE, Ugo**
Switzerland b.1964
cigarettesandwich 2003
DVD: 64 minutes, colour, sound, ed. 49/300
Acc. 2004.108
Purchased 2004
- RONTJI, Lindy**
Australia b.1962
(Arrernte (Aranda) language group)
Mount Sonder and possums 2003
Synthetic polymer paint on linen
90 x 120cm
Acc. 2003.163
Purchased 2003.
Queensland Art Gallery Foundation
- ROOTSEY, Joe**
Australia 1918-63
(Barrow Point people)
(Landscape near Horwick) c.1960
Watercolour
26 x 34cm (comp.)
(Landscape near Kalpower) c.1960
Watercolour
24.7 x 36cm (comp.)
(Landscape near Wakooka) c.1960
Watercolour
25.1 x 36.5cm (comp.)
(Landscape west of Barrow Point) c.1960
Watercolour
26.5 x 34cm (comp.)
Acc. 2004.017-020
Gift of Bill Menzies through the Queensland Art Gallery Foundation 2004
- RUSCHA, Edward**
United States b.1937
Vine intersects four other streets 2003
Synthetic polymer paint on canvas
213 x 305cm
Acc. 2003.172
Purchased 2003.
The Queensland Government's Queensland Gallery of Modern Art Acquisitions Fund
- SANDRASEGAR, Sangeeta**
Australia b.1977
Untitled no. 1 (from 'Goddess of flowers' series) 2003
Paper, beads and glitter
29.5 x 41cm (irreg.)
Untitled no. 22 (from 'Goddess of flowers' series) 2003
Paper, beads and glitter
29.5 x 44.5cm (irreg.)
Untitled no. 26 (from 'Goddess of flowers' series) 2003
Paper, beads and glitter
29.5 x 40cm (irreg.)
Untitled no. 27 (from 'Goddess of flowers' series) 2003
Paper, beads and glitter
28.5 x 42cm (irreg.)
Untitled no. 33 (from 'Goddess of flowers' series) 2003
Paper, beads and glitter
29.5 x 41.5cm (irreg.)
Untitled no. 34 (from 'Goddess of flowers' series) 2003
Paper, beads and glitter
29.5 x 41.5cm (irreg.)
Acc. 2004.133-138
Purchased 2004. Queensland Art Gallery Foundation Grant
- SELIG, Sandra**
Australia b.1972
mid-air 2003
Nylon thread, styrofoam
364 x 955 x 580cm (installed, approx.)
Acc. 2004.024
Purchased 2004 with funds from John Potter Pty Ltd through the Queensland Art Gallery Foundation
- STEVENSON, Michael**
New Zealand b.1964
Timor sea crossed on raft 2004
Pastel
30.8 x 10.5cm (comp.)
Frame saw 2004
Wood, metal, string, bamboo
86 x 114 x 8cm (irreg.)
Rute Migrasi Lama 2004
Synthetic polymer paint on canvas with maple rods and string
191 x 168 x 2.3cm (including rods)
Ocean currents, Australia 2004
Synthetic polymer paint on canvas with maple rods and string
250 x 220 x 2.3cm (including rods)
Purchased 2004.
The Queensland Government's Queensland Gallery of Modern Art Acquisitions Fund
Das gift 2004
Meranti wood, silk, nails
23.5 x 15 x 4.5cm
Ekspedisi Kon-Tiki 2004
Letterpress on paper in coconut wood frame, ed. 1/20
20.6 x 15cm (comp.)

- The gift* 2004
Gelatin silver photograph, ed. 1/15
39 x 56.4cm (comp.)
Purchased 2004.
The Queensland Government's Queensland
Gallery of Modern Art Acquisitions Fund
- SUBRIN, Elisabeth**
United States b.1964
Well, well, well 2002
Betacam SP: 3:45 minutes, colour, sound
Acc. 2004.110
Purchased 2004
- SYME, Eveline**
Australia 1888–1961
Under water 1956
Linocut, printed in colour from two blocks
in emerald green and brown on buff
oriental laid tissue, ed. 4/25
20.3 x 16.2cm (sight, comp.)
Acc. 2004.114
Purchased 2004.
Queensland Art Gallery Foundation Grant
- TABUAI, Allison**
Australia b.1933
(Kalaw Kawaw Ya language group)
Dhibal (Victory headdress) 2003–04
Cane, feathers, cotton cloth, cotton
thread, synthetic polymer paint
56 x 90.5 x 22.5cm
Acc. 2004.132
Purchased 2004.
Queensland Art Gallery Foundation
- TAKAI, Anna**
Tonga b.1952
Ta'ovala 2004
Knotted hibiscus bark, shells
104 x 249.5 x 1cm (irreg.)
Acc. 2004.147
Purchased 2004.
The Queensland Government's Queensland
Gallery of Modern Art Acquisitions Fund
- TAPATUETOA, Hasapea**
Niue Island b.1948
Bowl 2003
Woven raffia over coconut midrib
18 x 32.3cm (diam., irreg.)
- Bowl* 2003
Woven raffia over coconut midrib
10.5 x 33cm (diam., irreg.)
- Hat* 2003
Woven raffia over coconut midrib
8.2 x 31cm (diam., irreg.)
- Round mat (unfinished)* 2003
Woven raffia over coconut midrib
0.8 x 39.8cm (diam., irreg.) with 58.7cm
extension
Acc. 2004.031–034
Purchased 2004
- TEAGUE, Violet (artist and poet)**
Australia 1872–1951
REDE, Geraldine (collaborating artist)
Australia 1874–1943
Night fall in the ti-tree 1905
Book comprising 30 pages with 18
woodblock prints with stencilling and 11
pages with letterpress text; with green
ribbon binding in the Japanese manner
24.8 x 17.5 x 0.9cm (closed)
Acc. 2004.025
Purchased 2004.
Queensland Art Gallery Foundation
- THAIDAY Sr, Ken**
Australia b.1950
(Meriam Mir language group)
Symbol of the Torres Strait 2003
Plywood, feathers, plastic tubing, black
bamboo, synthetic polymer paint
175 x 238 x 130cm
Acc. 2004.039
Purchased 2004 with funds from Corrs
Chambers Westgarth through the
Queensland Art Gallery Foundation
- TJAMPITJINPA, Kaapa Mbitjana**
Australia c.1925–89
(Anmatyerre/Arrernte language groups)
Untitled 1971
Synthetic polymer paint and pencil on
cardboard
75 x 54.5cm
Acc. 2003.140
Purchased 2003 with funds from the
Queensland Art Gallery Foundation Appeal
and the Queensland Art Gallery
Foundation Grant
- Untitled* c.1950–60
Watercolour
37.5 x 54.5cm
Acc. 2004.021
Gift of Anthony and Beverly Knight
through the Queensland Art Gallery
Foundation 2004
- UNGWANAKA, Rahel**
Australia b.1946
(Arrernte (Aranda)/Luritja language
groups)
**HERMANNBURG POTTERS (pottery
workshop)**
Australia est. 1990
Kookaburras 2004
Earthenware, hand-built terracotta with
underglaze colours and applied decoration
34 x 20cm (diam., complete)
Acc. 2004.146a–b
Purchased 2004
- UNKNOWN**
Australia
View from signal tower looking south
c.1890
Albumen photograph
19.5 x 24.2cm (comp.)
Acc. 2003.178.001
Purchased 2003.
Queensland Art Gallery Foundation
- Botanical gardens under flood* 1893
(inscr. 1894)
Albumen photograph
19.3 x 24.5cm (comp.)
- Orizaba Orient and Pacific SS Coy,
homeward voyage* 1897
Albumen photograph
19 x 26.2cm (comp.)
- Airlock – weighted with steel rails. Pier
construction on north bank of River
Brisbane (sic)* c.1895–97
Albumen photograph
16.5 x 12.2cm (comp.)
- New Victoria Bridge – up-stream section
under construction* c.1895–97
(inscr. 1895–96)
Albumen photograph
19.5 x 26.2cm (comp.)
Acc. 2003.178.003–006
Purchased 2003.
Queensland Art Gallery Foundation
- Construction of new Inooroopilly Bridge
after floods* c.1893–95
Albumen photograph
7.3 x 9.7cm (comp.)
- Construction of new Inooroopilly Bridge
after floods* c.1893–95
Albumen photograph
7.3 x 9.7cm (comp.)
- Construction of new Inooroopilly Bridge
after floods* c.1893–95
Albumen photograph
7.1 x 8.9cm (comp.)
- Construction of new Inooroopilly Bridge
after floods* c.1893–95
Albumen photograph
7 x 9.6cm (comp.)
- Construction of new Inooroopilly Bridge
after floods* c.1893–95
Albumen photograph
7.5 x 9.5cm (comp.)
- Construction of new Inooroopilly Bridge
after floods* c.1893–95
Albumen photograph
7.6 x 9.8cm (comp.)
- Construction of new Inooroopilly Bridge
after floods* c.1893–95
Albumen photograph
7.2 x 9.2cm (comp.)
- Construction of new Inooroopilly Bridge
after floods* c.1893–95
Albumen photograph
7.2 x 9.6cm (comp.)
- North Queensland railway scene in
wooded country* c.1889
Albumen photograph
21.1 x 27.7cm (comp.)
- On the wallaby* c.1890s
Albumen photograph
13.8 x 10.4cm (comp.)
- On the wallaby (Spello)* c.1890s
Albumen photograph
13.8 x 10.5cm (comp.)
- On the wallaby (Cooee)* c.1890s
Albumen photograph
13.7 x 10.3cm (comp.)
- On the wallaby (Hark)* c.1890s
Albumen photograph
13.7 x 10.3cm (comp.)
- On the wallaby (A good yarn)* c.1890s
Albumen photograph
13.8 x 10.4cm (comp.)
- On the wallaby (Smoke-o)* c.1890s
Albumen photograph
13.8 x 10.4cm (comp.)
Acc. 2003.178.009–023
Purchased 2003.
Queensland Art Gallery Foundation
- North Queensland native* c.1890s
Albumen photograph
14.3 x 10.5cm (comp.)
- Queensland natives* c.1890s
Albumen photograph
10.4 x 14cm (comp.)
- Queensland native* c.1890s
Albumen photograph
14 x 10.5cm (comp.)
Acc. 2003.178.025–027
Purchased 2003.
Queensland Art Gallery Foundation
- UNKNOWN**
China
Storage jar (kuan) Neolithic period,
Yangshao culture, Majiayao phase
(3500–3000 BCE)
Swelling earthenware shape, narrowing to
the base, with narrow neck and two lugs
set vertically at the maximum diameter,
painted with black pigment
42.2 x 38cm (diam.)
- Storage jar (kuan)* Neolithic period,
Yangshao culture, Banshan phase
(3000–2500 BCE)
Swelling earthenware shape, narrowing to
the base, with flared mouth and two lugs
set vertically at the maximum diameter,
painted with black and maroon pigments
41.3 x 40.6cm (diam.)
Acc. 2004.022–023
Gift of Wellington and Virginia Yee
through the Queensland Art Gallery
Foundation 2004

- URALE, Sima**
Samoa/New Zealand b.1968
O Tamaiti 1996
35mm film and Betacam SP: 15 minutes, black and white, stereo
Acc. 2004.130
Purchased 2004.
Queensland Art Gallery Foundation Grant
- UTATAO, Moka**
Niue Island b.1944
Hat c.1998
Woven banana fibre over coconut midrib, bark cloth
13.3 x 36.7cm (diam., irreg.)
- Round mat* 1979
Woven pandanus and wool
89.9cm (diam., irreg.)
- Round mat* 2003
Woven raffia over coconut midrib
0.5 x 44cm (diam., irreg.)
- Bowl* 2003
Woven pandanus over coconut midrib
4.5 x 24cm (diam., irreg.)
Acc. 2004.035-038
Purchased 2004
- WHITELEY, Brett**
Australia 1939-92
Calcutta 1966
Oil, collage, photographs, glass, gesso, pencil, cloth and plaster on board with detachable sculpture
198 x 260 x 134.6cm (irreg., installed)
Acc. 2003.194a-c
Gift of Philip Bacon, AM, through the Queensland Art Gallery Foundation 2003
- WILSON, Lindsay**
Australia 1939-95
Yimbi (incomplete) c.1991
Colour laser copy, varnish and paint on composition board
11-part jigsaw puzzle: 1.5 x 27 x 33cm (overall)
- Yalma* c.1991
Colour laser copy, varnish and paint on composition board
10-part jigsaw puzzle: 1.5 x 29cm (diam., overall)
- Mirrimbal* c.1991
Colour laser copy, varnish and paint on composition board
16-part jigsaw puzzle: 1.5 x 30 x 36cm (overall)
- Dumbul* c.1991
Colour laser copy, varnish and paint on composition board
12-part jigsaw puzzle: 1.5 x 26 x 40cm (overall)
- Waymbil* c.1991
Colour laser copy, varnish and paint on composition board
12-part jigsaw puzzle: 1.5 x 28 x 39cm (overall)
- Madja:y wagay* c.1991
Colour laser copy, varnish and paint on composition board
14-part jigsaw puzzle: 1.5 x 26 x 40cm (overall)
- Totuam epiap* c.1991
Colour laser copy, varnish and paint on composition board
12-part jigsaw puzzle: 1.5 x 20 x 29cm (overall)
- Marap* c.1991
Colour laser copy, varnish and paint on composition board
11-part jigsaw puzzle: 1.5 x 20 x 29cm (overall)
- Dhoeri dari* c.1991
Colour laser copy, varnish and paint on composition board
10-part jigsaw puzzle: 1.5 x 21 x 29cm (overall)
- Warup* c.1991
Colour laser copy, varnish and paint on composition board
11-part jigsaw puzzle: 1.5 x 18 x 29cm (overall)
- Aper walap* c.1991
Colour laser copy, varnish and paint on composition board
12-part jigsaw puzzle: 1.5 x 19 x 29cm (overall)
- Kom* c.1991
Colour laser copy, varnish and paint on composition board
12-part jigsaw puzzle: 1.5 x 20 x 27.5cm (overall)
- Kulap goar* c.1991
Colour laser copy, varnish and paint on composition board
1.5 x 20 x 29.5cm (overall)
- Bu* c.1991
Colour laser copy, varnish and paint on composition board
9-part jigsaw puzzle: 1.5 x 20 x 28cm (overall)
- Dhangal deger* c.1991
Colour laser copy, varnish and paint on composition board
12-part jigsaw puzzle: 1.5 x 16 x 28cm (overall)
- Weres werir* c.1991
Colour laser copy, varnish and paint on composition board
10-part jigsaw puzzle: 1.5 x 18 x 29cm (overall)
Acc. 2004.043-058
Purchased 2004
- WILSON, Regina**
Australia b.1948
(Nganikurrungurr language group)
Warrgarri (Dilly bag stitch) 2003
Synthetic polymer paint on canvas
124 x 160cm
Acc. 2004.040
Purchased 2004 with funds from Corrs Chambers Westgarth through the Queensland Art Gallery Foundation
- WIRTH, L.W.K.**
Germany/England/Australia 1858-1950
A Queensland industry 1893
Oil on canvas
64 x 76.5cm
Acc. 2004.026
Purchased 2004
- WONAEAMIRRI, Pedro**
Australia b.1974
(Tiwi language group)
Pwaja (Pukumani body paint design) 2003
Natural pigments on linen
203 x 118cm
Acc. 2004.116
Purchased 2004 with funds from Corrs Chambers Westgarth through the Queensland Art Gallery Foundation
- WUNUNGMURRA, Yanggarriny**
Australia c.1932-2003
(Dhalwangu language group)
Dhalwangu larrakitj (Dhalwangu clan burial pole) 2002
Natural pigments on wood
233 x 18cm (diam.)
Acc. 2003.164
Purchased 2003.
Queensland Art Gallery Foundation
- WURM, Erwin**
Austria b.1954
One minute sculptures 1997
DVD: 47 minutes, colour, stereo, A.P. 1/2
Acc. 2003.209
Purchased 2003.
Queensland Art Gallery Foundation Grant
- YALANDJA, Owen**
Australia b.1962
(Kuninjku language group)
Yawkyawk 2003
Carved wood with natural pigments
211 x 10 x 10cm
- Yawkyawk* 2003
Carved wood with natural pigments
201 x 10 x 10cm
- Yawkyawk* 2003
Carved wood with natural pigments
246 x 10 x 10cm
- Yawkyawk* 2003
Carved wood with natural pigments
168 x 10 x 10cm
- Yawkyawk* 2003
Carved wood with natural pigments
251 x 10 x 10cm
- Yawkyawk* 2002
Carved wood with natural pigments
200 x 10 x 10cm
Acc. 2003.165-170
Purchased 2003.
Queensland Art Gallery Foundation
- YARINKURA, Lena**
Australia b.1961
(Kune/Rembarrnga language groups)
Jamu (dog) 2003
Twined pandanus and wood with natural pigments and PVC fixative
7 parts: 42 x 108 x 33cm (complete)
- Jamu (dog)* 2003
Twined pandanus and wood with natural pigments and PVC fixative
7 parts: 50 x 102 x 28cm (complete)
- Jamu (dog)* 2003
Twined pandanus and wood with natural pigments and PVC fixative
7 parts: 62 x 122.5 x 58cm (complete)
- Jamu (dog)* 2003
Twined pandanus and wood with natural pigments and PVC fixative
15 parts: 72 x 163 x 45cm (complete)
Acc. 2004.100-103
Purchased 2004.
Queensland Art Gallery Foundation Grant
- YOSHIFUJI Utagawa**
Japan 1828-87
(Album of prints) c.1867-91
Colour woodblock prints
Album: 35.5 x 23.5 x 3.5cm (closed);
20 triptychs: 35.5 x 23.5cm (each panel, comp., oban)
Acc. 2003.176
Gift of Barbara Reye through the Queensland Art Gallery Foundation 2003
- ZURBRUGG, Nicholas (artist)**
Australia 1947-2001
- WOLTER, Adam (collaborating artist)**
Australia b.1958
(Lyotard, Baudrillard, Jameson, Jencks, Bonito-Oliva, etc. . . . Past-modern crisis ahead) 1989
Computer-generated image, ed. 2/50
33.2 x 28cm (comp.)
- (Beautiful . . . deadly . . . sexist . . . pornographic . . .)* 1989
Computer-generated image, ed. 3/25
25.8 x 40cm (comp.)
- (Grey skies)* 1989
Computer-generated image, ed. 2/25
16 x 20.4cm (comp.)

Sima Urale
Samoa/New Zealand b.1968
O Tamaiti (stills) 1996
35mm film and Betacam SP: 15 minutes,
black and white, stereo
Purchased 2004.
Queensland Art Gallery Foundation Grant



ZURBRUGG, Nicholas (artist)
Australia 1947–2001
WOLTER, Adam (collaborating artist)
Australia b.1958
(*Hyper-reality city limits*) 1989
Computer-generated image, ed. 3/50
26 x 38.8cm (comp.)

(*No exit*) 1989
Computer-generated image, ed. 3/25
33.7 x 26.7cm (comp.)
Acc. 2004.006–010
Gift of Peter Bellas through the
Queensland Art Gallery Foundation 2004

DEACCESSIONS

ART DECO STYLE
Czechoslovakia
Display case c.1925–45
Walnut veneers with three glazed doors
148.5 x 186.7 x 48cm
Acc. 4:0858
Bequest of Dr Ernest Singer 1975

Bookcase c.1925–45
Walnut veneers
147.3 x 186.3 x 49.3cm
Acc. 4:0859
Bequest of Dr Ernest Singer 1975

ASHTON, Will
Australia 1881–1963
On the Seine c.1936
Oil on canvas on plywood
61 x 81.4cm
Acc. 1:1025
Purchased 1965

BOYD, Guy
Australia 1923–88
African dancer c.1974
Bronze, ed. 2/6
58.5 x 17.7 x 21.5cm
Acc. 1:1319
Purchased 1974

CONDER, Charles
England/Australia 1868–1909
Diptych: (*Five figures in a classical landscape; Backview of a nude in a classical landscape*) c.1900
Watercolour on silk
54 x 71cm (each panel)
Acc. 1986.029.003–004
Gift of Lady Trout 1986

DALGARNO, Roy
Australia 1910–2001
Pont Charles, Prague 1949–50
Oil on plywood
50.8 x 77cm
Acc. 1:0609
Purchased 1954

DOBELL, William
Australia 1899–1970
A London bridge (Hungerford Bridge) 1936
Oil on canvas on composition board
39.2 x 49.3cm
Acc. 1:0615
Gift of Captain Neil McEacharn, Italy 1954

Hedley R. Marston, FRS 1952
Oil on composition board
121.7 x 91.2cm
Acc. 1:0796
Purchased 1959

ELIZABETHAN
England
Press cupboard c.1600
Oak
167.2 x 147.5 x 53.9cm
Acc. 4:0809
Bequest of Mr E. McConnell through Mrs
E. Trier 1963

ELIZABETHAN STYLE
England
Court cupboard c.1850
Oak, carved and stained
173.7 x 122.5 x 51.2cm
Acc. 1995.064
Gift of Lawrence King 1995

GEORGIAN, George III
England
Chest with drawers c.1770
Mahogany veneers with wooden handles
and brass castors
82.9 x 107.8 x 51.4cm
Acc. 4:0819
Bequest of Blanche Louisa Buttner 1972

GEORGIAN STYLE, George I
England
Four dining and two carver chairs c.1880
Walnut, walnut veneer and oak with
cabriole legs, carved ball and claw feet and
carved pectin shells on legs. Cord
upholstery
Dining chairs: 99.5 x 44 x 51.5cm (each);
carver chairs: 102.5 x 63.1 x 50.1cm (each)
Acc. 4:0839.001–6
Bequest of Blanche Louisa Buttner 1972

GIBSON, Bessie
Australia 1868–1961
Portrait (woman with hat) c.1910–20
Oil on canvas
64.5 x 54cm
Acc. 1:1418
Gift of Dr Walter Lockhart Gibson 1975

Portrait (woman with blue and pink scarf)
c.1920s
Oil on canvas
72 x 59.5cm
Acc. 1:1419
Gift of Dr Walter Lockhart Gibson 1975

High tide c.1920–40
Oil on wood
37.9 x 45.5cm
Acc. 1:1731
Purchased 1980

GREENE, Anne Alison
Australia 1878–1954
(*Still life with lemons*) c.1920s
Oil on cardboard
53.7 x 76.6cm
Acc. 1:1700
Gift from Mrs V. Owen-Winchester on
behalf of the late Miss Elsie Greene and
the late Miss Hilda Greene, sisters of the
artist, 1980

GRUNER, Elioth
Australia 1882–1939
Capri c.1924
Oil on plywood
43.8 x 35.7cm
Acc. 1989.066
Purchased 1989 from the estate of Lady
Trout with a special allocation from the
Queensland Government

HAXTON, Elaine
Australia 1909–99
New faces in the willow pattern 1963
Oil on canvas
121.7 x 121.7cm
Acc. 1:1145
Purchased 1970

HERMAN, Sali
Switzerland/Australia 1898–1993
Flat-Tops, Central Australia 1956
Oil on canvas
71 x 114.3cm
Acc. 1:0781
Acquired 1958. H.C. Richards Memorial
Prize (winning entry)

English wedding 1953–58
Oil on canvas
46.2 x 61cm
Acc. 1:0807A
Gift of the artist 1959

KMIT, Michael
Australia 1910–19
Girl with flower 1965
Oil on composition board
121.9 x 81.4cm
Acc. 1:1141
Purchased 1970

LINDSAY, Daryl
Australia 1890–1976
Mulberry Hill 1938
Oil on canvas
62.3 x 77cm
Acc. 1:0324
Purchased 1943

Going out for the steeplechase 1934
Oil on canvas
61 x 75.6cm
Acc. 1:0327
Purchased 1943

Ballet practice, Borovansky's 1939,
repainted 1962–63
Oil on canvas
61 x 79.6cm
Acc. 1:1048
Gift of S.H. Ervin 1966

Baronova bowling c.1938–39
Brown chalk, pastel and pencil on brown
wove paper
35.6 x 33cm (comp.)
Acc. 2:0220A
Gift of the artist 1944

Ballet studies 1938
Pen and ink and wash on wove paper
36.2 x 33.2cm (comp.)
Acc. 2:0478
Gift of the artist 1961

LOUIS XV
Bombe commode c.1750
Walnut veneers on pine with gilt metal
rococo handles and escutcheons
81.2 x 117.5 x 57cm
Acc. 4:0828
Bequest of Blanche Louisa Buttner 1972

LOUIS XVI STYLE
France
Parlour setting (settee and four armchairs)
c.1860–1900
Gesso and gilt, round legs, reeded, and
upholstered with original Aubusson silk
tapestry with urns and flowers
Settee: 108.2 x 133.9 x 64cm; four
armchairs: 105.6 x 61.7 x 55.2cm (each)
Acc. 4:0800.001–5
Purchased 1960

LYMBURNER, Francis
Australia 1916–72
Girl with lute 1950
Oil on canvas on composition board
41 x 50.7cm
Acc. 1:0473
Purchased 1950

Figure on the beach c.1950
Oil on canvas on composition board
30.5 x 61cm
Acc. 1:1044
Purchased 1965

McCUBBIN, Frederick
Australia 1855–1917
The glade 1913
Oil on canvas
117.1 x 92.2cm
Acc. 1:0550
Purchased 1952

McINNES, W.B.
Australia 1889–1939
*Colour note: The Stile, Kingfishers Ford,
Haughton Hunts, England* 1913
Oil on cardboard
26 x 35.5cm
Acc. 1:0388
Gift of Miss Maria Therese Treweweke 1946

Portrait of H.S. Gilkes: 'The Connoisseur'

1938
Oil on canvas
110 x 90.9cm
Acc. 1:0584
Purchased 1953

MURCH, Arthur

Australia 1902–89
The squirrel 1944
Oil on canvas on plywood
48.1 x 68.7cm
Acc. 1:0332
Purchased 1944

NOLAN, Sidney

Australia/England 1917–92
Darling River c.1949
Oil on composition board
76.3 x 91.3cm
Acc. 1:0591
Purchased 1953

Antarctica 1964

Synthetic polymer paint on composition board
58.2 x 73.5cm
Acc. 1:1772
Purchased 1981.
Russell Cuppage Fund

PUGH, Clifton

Australia 1924–90
Sea front, Broome 1964
Oil on composition board
91.5 x 121.7cm
Acc. 1:1017
Purchased 1964

QUEEN ANNE

England
Cabinet on chest c.1705
Burr walnut veneers on oak, with pine, gilt metal engraved handles and pierced escutcheons
173.5 x 113.2 x 54.5cm
Acc. 4:0837
Bequest of Blanche Louisa Buttner 1972

ROBERTS, Tom

Australia 1856–1931
Portrait of the artist's son, Caleb c.1905
Oil on canvas laid down on plywood
91.2 x 61.5cm
Acc. 1:0824
Purchased 1960

VASSILIEFF, Danila

Russia/Australia 1897–1958
41 Martin Place c.1936
Oil on plywood
34.2 x 36cm
Acc. 1985.050.001
Gift of Naomi and Simon Bracegirdle 1985

VICTORIAN

England
Gentleman's press c.1837–40
Mahogany veneers on cedar, with oak and pine
217.8 x 146.9 x 58.2cm
Acc. 4:0826
Bequest of Blanche Louisa Buttner 1972

WILLIAM & MARY

England
Low dresser c.1690
Beech, elm and oak with engraved brass handles
86.7 x 193.7 x 50.8cm
Acc. 4:0808
Purchased 1963

WILSON, Dora

Australia 1883–1946
Autumn in Collins Street, Melbourne c.1931
Oil on canvas on composition board
47.8 x 54.9cm
Acc. 1:0258
Purchased 1938

WITHERS, Walter

Australia 1854–1914
After the storm c.1898
Oil on canvas
35.6 x 46cm
Acc. 1:0809
Purchased 1960

from top:

Ken Thaiday Sr
Australia b.1950
(Meriam Mir language group)
Symbol of the Torres Strait 2003
Plywood, feathers, plastic tubing, black bamboo, synthetic polymer paint
175 x 238 x 130cm
Purchased 2004 with funds from Corrs Chambers Westgarth through the Queensland Art Gallery Foundation

Jun Kaneko

Japan/United States b.1942
Clear, blue, yellow and red slabs 2001
Kiln-formed glass (colourless and three primary colours)
Four components: 198.5 x 49.5 x 5.1cm (each)
Purchased 2004 with funds from the Thomas Foundation through the Queensland Art Gallery Foundation



EXHIBITIONS SCHEDULE AND SPONSORS

EXHIBITIONS PRESENTED AT THE GALLERY

OTHERWORLDS: IMAGES OF FANTASY AND FICTION

4 April – 6 July 2003

Principal sponsor: Commonwealth Bank
This youth-focused exhibition explored fantastic, fictitious and surrealist worlds. It featured the work of artists who use the fragmentary nature of dreams, visions and altered mind states to produce their work. A broad range of media was represented, including drawing, collage-montage, video, photography, painting and assemblage.

PIERRE BONNARD: OBSERVING NATURE

4 July – 28 September 2003

Organised by the National Gallery of Australia, Canberra, in association with the Queensland Art Gallery
Sponsored by Channel Seven and Art Indemnity Australia
Sponsored in Queensland by Adshel and *The Courier-Mail*

The first major exhibition of this artist's work to be seen in Australia for more than 30 years, 'Pierre Bonnard: Observing Nature' revealed an artist of enormous range and depth. From Parisian street scenes to warm interiors and intimate nudes, Bonnard imbued his paintings of deceptively simple everyday scenes with colour, light, intimacy and joy. This exhibition brought together some 120 works from throughout the artist's career.

DOUGLAS ANNAND: THE ART OF LIFE

12 July – 31 August 2003

A National Gallery of Australia Travelling Exhibition

Sponsored by Australian Air Express
Queensland-born Douglas Annand is recognised as one of Australia's most influential commercial artists and graphic designers. The majority of his work was produced from the 1930s to the 1950s, an era when an influx of new, modern ideas challenged the conservative tastes that prevailed in Australia. 'Douglas Annand: The Art of Life' told the story of an innovative and versatile graphic artist who pioneered modern design in Australia.

STORY PLACE: INDIGENOUS ART OF CAPE YORK AND THE RAINFOREST

25 July – 9 November 2003

Principal sponsors: Queensland Government (Arts Queensland, Department of Employment and Training, Department of Aboriginal and Torres Strait Islander Policy), the Aboriginal and Torres Strait Islander Commission (ATSIC) and Comalco

Major sponsors: *The Courier-Mail*, Network Ten, and Australian Posters
Supporting sponsors: HarrisonNess,

Queensland Performing Arts Centre, Screen Offset Printing and Tourism Queensland

Australia's first major survey exhibition of historical and contemporary Indigenous art from Cape York Peninsula, 'Story Place' offered compelling insights into the art and culture of one of Australia's most isolated, yet culturally rich, regions. 'Story Place' provided the unique opportunity to discover not only the dynamic contemporary art of the region, but also historical works dating from the end of the nineteenth century. 'Story Place' featured more than 300 works by more than 80 artists.

SEEING THE CENTRE: THE ART OF ALBERT NAMATJIRA 1902–1959

9 August – 2 November 2003

A National Gallery of Australia Travelling Exhibition

Sponsored by Marsh and Australian Air Express

Sponsored in Queensland by Santos
Commissioned to coincide with the centenary of Albert Namatjira's birth, this exhibition presented more than 60 works that conveyed the artist's spiritual connections to his ancestral lands – the Western Aranda (Arrernte) country of Central Australia.

FRAGMENTS

13 September 2003 – 14 March 2004

This exhibition presented collages, assemblages and prints from the Gallery's Collection which explored a significant aspect of twentieth-century art practice – the notion of the fragment as something disembodied from its original context and repositioned within a new field of association.

LOST AND FOUND

8 November 2003 – 1 February 2004

Sponsored by Quest Community Newspapers and Adshel
'Lost and Found', another in the Gallery's acclaimed series of children's exhibitions, explored the way contemporary artists transform ordinary, everyday objects into amazing art works. The exhibition featured more than 30 sculptures, collages and assemblages from the Gallery's Collection by Australian and international artists. Art works made out of frog skins, old soy sauce containers, playing cards and driftwood made the ordinary extraordinary!

DADANG CHRISTANTO

For those who have been killed . . .

22 November 2003 – 22 February 2004

Indonesian artist Dadang Christanto's work expresses his views on social problems such as violence, oppression, poverty and injustice. Acquired following their inclusion in the 'First Asia-Pacific Triennial of Contemporary Art' in 1993,

the works in this installation convey a powerful, humanistic empathy for voiceless victims throughout history.

WILLIAM ROBINSON PASTELS

22 November 2003 – 28 March 2004

William Robinson has experimented with the pastel medium throughout his career and has recently refocused his interest in this medium. This display featured the seven exquisite pastels gifted to the Gallery by the artist in 2003.

HOW WE LIVE

6 December 2003 – 22 February 2004

'How We Live' opened a window into the lives of those in different countries and cultures – their joy, sadness, dreams and courage. In this exhibition, the work of 13 artists from the Asia-Pacific region using the moving image, photography and sculpture described 'how they live' in different cultural contexts, while at the same time conveying emotions readily identified by anyone, anywhere.

AH XIAN

6 December 2003 – 7 March 2004

Beautiful, compelling, haunting . . . words that describe the work presented in this exhibition of ten works by the award-winning artist Ah Xian. The centrepiece of the show was the astonishing life-size cloisonné piece *Human human – lotus, cloisonné figure 1* 2000–01, one of the most significant figurative sculptures of the past two decades.

VIDEO HITS: ART & MUSIC VIDEO

21 February – 12 April 2004

27 March – 14 June 2004

'Video Hits' explored the relationship between art and music video through a range of innovative works by music video directors and visual artists – several of whom had never before exhibited in Australia. The exhibition offered an original and challenging framework for the MTV generation to engage with a form of popular culture that has defined a new aesthetic.

ISLAND BEATS

6 March – 14 June 2004

'Island Beats' presented contemporary Pacific weaving and textile works recently acquired by the Gallery at the 2003 Pasifika Arts Festival in Aotearoa New Zealand. The exhibition of highly colourful and intricately designed woven and textile works, using natural and synthetic fibres, celebrated the rhythm of life in the Pacific Islands.

EDUCATION MINISTER'S AWARDS FOR EXCELLENCE IN ART

13 March – 30 May 2004

Organised by Education Queensland and supported by the Queensland Government and Regional Galleries Association of Queensland

This annual exhibition recognises and promotes the outstanding achievements of art students from secondary schools throughout Queensland. In 2004, 47 works from entries by approximately 15 000 senior art students were on display.

BUDDHA

27 March – 23 May 2004

To mark Buddha's birthday, the Gallery presented a display of Asian works, including a group of Buddha sculptures from South-East Asia (on loan from a private collection), as well as the work *Hall of thirty-three boys* 1995 by Hiroshi Sugimoto from the Gallery's Collection.

CONTEMPORARY PAINTINGS FROM THE COLLECTION

9 April – 14 June 2004

MAN RAY

8 May – 18 July 2004

An exhibition organised by the Art Gallery of New South Wales
Sponsored by The President's Council of New South Wales
Media Sponsor in Queensland: Adshel
Gallery audiences experienced the work of revolutionary photographer Man Ray, 'the poet of the darkroom', in this monographic exhibition of close to 200 works drawn from the Paris collection of the artist's former assistant, Lucien Treillard, and the Centre Georges Pompidou.

MINIATURES

29 May – 29 August 2004

This exhibition explored the resurgence of interest in the miniature in South Asian art, and the politically inspired, radical art that draws on the tradition of the miniature from sixteenth-century India.

DESIGN EXCELLENCE IN QUEENSLAND

5–14 June 2004

Presented by the Design Institute of Australia in association with the Queensland Art Gallery, this exhibition profiled the 47 finalists in the 2004 Queensland Design Awards.

THE LOOK OF FAITH

26 June 2004 – 20 February 2005

'The Look of Faith' explored artists' 'poetic' and artistic responses to ideas, expressions and questionings of religious and spiritual faith.

**FOCUS/THEMATIC DISPLAYS
PRESENTED AT THE GALLERY**

**MARGARET OLLEY: CELEBRATING
LIFE**

8 March – 6 July 2003

ERIC WILSON

16 August – 2 November 2003

DOCUMENT OR ART?

16 August – 2 November 2003

JOHN RIGBY FOCUS

14 November 2003 – 28 March 2004

GEORGE BALDESSIN PRINTS

14 November 2003 – 9 May 2004

COLOUR COUNTRY

14 November 2003 – 9 May 2004

LIONEL LINDSAY

14 November 2003 – 9 May 2004

**RECENT ACQUISITIONS – SIDNEY
NOLAN**

14 November – 9 May 2004

CONCEPTUALISM IN BRISBANE

15 November 2003 – 7 March 2004

**EXHIBITIONS PRESENTED IN
REGIONAL QUEENSLAND**

**EXPLORING OUTBACK: ARTISTS'
RESPONSES TO LIFE ON THE
LAND**

28 June 2002 – 7 September 2003

A Queensland Art Gallery Travelling
Exhibition

Supported by 2001 Year of the Outback

Qantas Founders Outback Museum,
Longreach

28 June – 4 August 2002

Gallery Hinchinbrook, Ingham

16 August – 15 September 2002

Emerald Regional Art Gallery

27 September – 20 October 2002

Dogwood Crossing Art Gallery, Miles

25 October – 1 December 2002

Texas Regional Art Gallery

6 December 2002 – 11 January 2003

Logan Art Gallery

17 January – 22 February 2003

Cooloolo Shire Art Gallery, Gympie

28 February – 13 April 2003

Dalby Regional Art Gallery

18 April – 25 May 2003

Rockhampton Art Gallery

30 May – 20 July 2003

Artspace Mackay

25 July – 7 September 2003

**POP: THE CONTINUING
INFLUENCE OF POPULAR
CULTURE ON CONTEMPORARY
ART**

6 August 2003 – 28 November 2004

A Queensland Art Gallery Travelling
Exhibition

Principal sponsor: Commonwealth Bank

Logan Art Gallery

6 August – 6 September 2003

Toowoomba Regional Art Gallery

19 September – 2 November 2003

Artspace Mackay

8 November – 21 December 2003

Redcliffe City Art Gallery

7 January – 14 February 2004

Bundaberg Arts Centre

26 February – 21 March 2004

Gladstone Regional Art Gallery and
Museum

26 March – 15 May 2004

Perc Tucker Regional Gallery, Townsville

16 July – 5 September 2004

Ipswich Art Gallery

18 September – 28 November 2004

**STORY PLACE: INDIGENOUS ART
OF CAPE YORK AND THE
RAINFOREST**

19 May 2004 – 19 June 2005

A Queensland Art Gallery Travelling
Exhibition

Sponsored by the Queensland
Government, ATSIC and Comalco

This exhibition is an initiative of the
Queensland Art Gallery, supported by the
Queensland Gallery of Modern Art

Hervey Bay Regional Gallery

19 May – 23 June 2004

Cairns Regional Gallery

2 July – 29 August 2004

Rockhampton Art Gallery

10 September – 31 October 2004

Cooloolo Shire Art Gallery, Gympie

10 November – 12 December 2004

Artspace Mackay

18 December 2004 – 12 February 2005

Gladstone Regional Art Gallery and
Museum

18 February – 9 April 2005

Perc Tucker Regional Gallery, Townsville

22 April – 19 June 2005

from top:

Adam Cullen

Australia b.1965

Gaol sex 1999

Synthetic polymer paint on canvas

183 x 152cm

Gift of Peter Fay through the Queensland Art
Gallery Foundation 2004

Brett Whiteley

Australia 1939-92

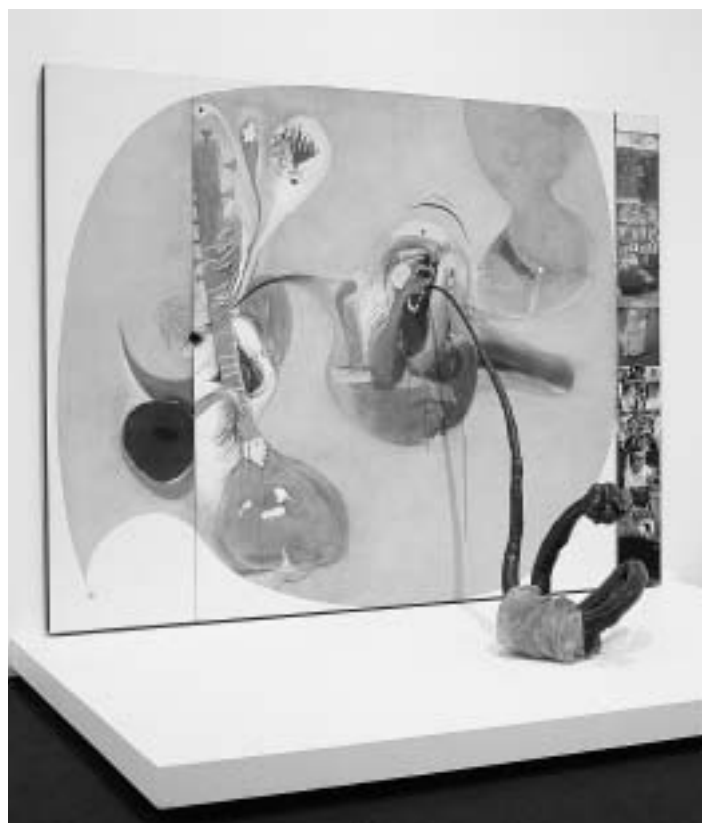
Calcutta 1966

Oil, collage, photographs, glass, gesso, pencil,
cloth and plaster on board with detachable
sculpture

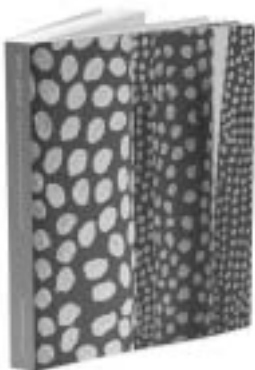
198 x 260 x 134.6cm (irreg., installed)

Gift of Philip Bacon, AM, through the
Queensland Art Gallery Foundation 2003

© Wendy Whiteley



PUBLICATIONS



MAJOR PUBLICATIONS

Ah Xian.

This publication, featuring the work of award-winning artist Ah Xian, includes the artist's recent life-size cloisonné enamel body, and busts in traditional lacquer-work, jade and porcelain. It reveals Ah Xian's exploration of different worlds, both physical and psychological, and a desire to embrace the traditional materials, techniques and crafts of his homeland, China.

Prime 04: art+music+video.

A program centred on the intersections of art, music and the moving image, *Prime 04* profiled the artists, performers and speakers who were part of the National Youth Week event.

Story Place: Indigenous Art of Cape York and the Rainforest.

For the first time in one book, the art and culture of Queensland's Cape York Peninsula is observed through a series of essays, interviews, and artist and community profiles. The term 'story place' is used to describe a natural feature of spiritual or cultural significance, and these stories form the book's heart.

Video Hits: Art & Music Video.

From cliché to mini revolution, music videos have a few minutes to make their mark. Over the last 30 years, film clips for bands have developed into an influential cultural form. *Video Hits* reveals the intersections between visual artists and commercial video directors at the exploratory edges of music video.

PUBLISHED BY THE GALLERY

Ah Xian.

(2003, exhibition catalogue, 56pp, illus: col.).

Staff contributions:

- Devenport, Rhana (with Linda Jaivin). 'Dualism and solitary journeys: An interview with Ah Xian'. (pp.16–25).
- Hall, Doug. Preface. (p.7).
- Raffel, Suhanya and Seear, Lynne. 'Human human'. (pp.8–15).
- Were, Ian. 'Revitalising tradition: Ah Xian's cloisonné, jade and lacquer figures'. (pp.26–31).

Artlines.

[quarterly magazine published for the Members of the Queensland Art Gallery] Spring 2003 – Winter 2004. (20pp, illus: col.).

Staff contributions:

- Arden, Holly. 'Acquisition: Brett Whiteley's *Calcutta*'. (Winter 2004, p.5).
- Arden, Holly. 'New acquisition: Minnie Pwerle's *Awelye Atnwengerrp*'. (Autumn 2004, p.5).

- Arden, Holly. 'New acquisition: Patricia Piccinini's "Car nuggets"'. (Spring 2003, pp.14–15).
- Arden, Holly, Chambers, Nicholas and McDougall, Ruth. 'Reinterpreting the everyday'. (Summer 2004, pp.8–9).
- Burnett, David. 'Fragments'. (Summer 2004, p.10).
- Burnett, David. 'Man Ray's world'. (Autumn 2004, pp.6–8).
- Butler, Sally. 'In conversation with John Conroy'. (Summer 2004, pp.16–17).
- Butt, Zoe. 'How we live'. (Summer 2004, pp.12–13).
- Carter, Anne. 'Going behind the scenes'. (Winter 2004, p.17).
- Chambers, Nicholas. 'Sensory overload'. (Spring 2003, p.18).
- Chambers, Nicholas and Weir, Kathryn. 'Followers of the footage'. (Autumn 2004, pp.10–13).
- Collins, Joan and Nichols, Kelly. 'Our story'. (Summer 2004, p.18).
- Cooke, Glenn. 'Sir William Dargie 1912–2003'. (Spring 2003, p.13).
- Cooke, Glenn. 'Carl McConnell 1926–2003'. (Summer 2004, p.15).
- Cooke, Glenn. 'Sam Fullbrook 1922–2004'. (Winter 2004, p.18).
- Dezuanni, Rebecca. 'Miniatures'. (Autumn 2004, pp.14–15).
- Flatt, Naomi. 'Three months in Venice'. (Autumn 2004, p.18).
- Hall, Doug. 'My time with Andy Warhol (Vincent Fremont)'. (Winter 2004, pp.6–7).
- Hawker, Michael. 'New acquisition: Simryn Gill's *Dalam*'. (Summer 2004, p.14).
- Kirker, Anne. "'The Look of Faith' – Inquiries into the spiritual: Colin McCahon'. (Winter 2004, pp.8–9).
- McColm, Donna. 'New wave: Leading the way'. (Winter 2004, p.17).
- McColm, Donna, Stratton, Sarah and Walsh, Julie. 'The Pop phenomenon'. (Spring 2003, pp.6–8).
- Noyce, Tiffany. 'At home with Rubens'. (Winter 2004, p.15).
- Osmond, Gillian and Zilli, Robert. 'Cleaning and re-framing *Trois danseuses* . . .'. (Summer 2004, p.5).
- Page, Maud. 'Island Beats'. (Autumn 2004, pp.16–17).
- Shellard, Samantha. 'Preserving the image'. (Spring 2003, pp.16–17).
- Stutchbury, Sarah. 'East and West; old and new; perfection and frailty'. (Summer 2004, pp.6–7).
- Timmins, Kylie. 'Diverse opportunities'. (Spring 2003, p.5).
- Timmins, Kylie. 'Prime 04: art+music+video'. (Winter 2004, pp.10–11).
- Were, Ian. 'Book as art object'. (Spring 2003, p.9).
- Were, Ian. 'Book review: Takashi Murakami'. (Winter 2004, p.18).
- Were, Ian. 'Doing something good'. (Autumn 2004, p.9).
- Were, Ian. 'Review: Magazines forever'. (Summer 2004, p.11).
- Artmail.**
(e-bulletins) No.41–63, 2003–04.
- Lost and Found.**
(2003, children's activity book, illus: col.).
- Pop: The Continuing Influence of Popular Culture on Contemporary Art.**
(2003, exhibition catalogue, illus: col.).
- Preview.**
(quarterly; brochure, illus: col.).
- Prime 04: art+music+video.**
(2004, brochure, 28pp., illus: col.).
- Queensland Art Gallery Annual Report 2002–03.**
(2003, 68pp., illus: b/w.).
- Queensland Art Gallery Foundation Annual Report 2002–03.**
(2003, 56pp., illus: col., b/w.).
- Story Place: Indigenous Art of Cape York and the Rainforest – Opening Celebrations.**
(2003, brochure, illus: col.).
- Story Place: Indigenous Art of Cape York and the Rainforest.**
(2003, children's activity book, illus: col.).
- Story Place: Indigenous Art of Cape York and the Rainforest.**
(2003, education resource kit, illus: col.).
- Story Place: Indigenous Art of Cape York and the Rainforest.**
(2003, exhibition catalogue, 240pp., illus: col., b/w.).
- Staff contributions:
Albert, Tony. 'Joe Ngallametta'. (p.79); 'Jubilee Wolmby'. (p.80); 'Ron Yunkaporta'. (pp.81–2).
- Burnett, David. 'Art of the Cape: An introduction'. (pp.18–25); 'Kakan: An interview with Wilma Walker'. (pp.112–15).
- Butler, Sally. 'Cape York's time in motion'. (pp.192–9); 'Samantha Hobson'. (pp.116–19); 'Patrick Butcher'. (p.128); 'Tulo Gordon'. (p.129); 'John Cummins'. (p.130); 'Luke Cummins'. (p.131); 'Silas Hobson'. (p.132); 'Fiona Ormeeny'. (p.138); 'Terry Platt'. (p.139).
- Cooke, Glenn. 'Cornelius Richards'. (p.177).
- Denham, Peter and Johnson, Trish. 'All things work together: An experience of working with the Cape communities'. (pp.204–9).
- Dezuanni, Rebecca. 'Aurukun'. (p.83); 'Kowanyama'. (p.84); 'Napranum'. (p.85); 'Jumbun community, Murray Upper'. (pp.182–3).
- Ewington, Julie. 'Working in the river: Baskets of the rainforest'. (pp.158–65).
- Flatt, Naomi. 'Hopevale'. (p.140); 'Laura'. (p.141); 'Lockhart River'. (p.142); 'Mossman Gorge'. (p.143); 'Ravenshoe'. (p.184); 'Yarrabah'. (p.185).
- Hall, Doug. Introduction (with Wayne Goss). (p.10).
- Johnson, Trish. 'Shared stories and places: Art of the rainforest'. (pp.150–7); 'Jawun: An interview with Desley Henry'. (pp.166–9); 'Thancoupie'. (pp.72–5); 'Dorothy Short'. (pp.124–7); 'Walter Jack'. (p.133); 'Michael Boiyool Anning'. (pp.170–3).
- McLean, Bruce. 'Aron Raymond Meeks'. (pp.136–7).
- Moon, Diane. 'Ruby Ludwick'. (p.178); 'Philomena Yeatman'. (p.179).
- Quaill, Avril. 'Keeping and sharing: The Tropical North Queensland Institute of TAFE'. (pp.200–3); 'Lisa Michl'. (p.77); 'Rosella Namok'. (pp.120–3); 'Vernon Ah Kee'. (pp.174–5); 'Munganbana (Norman Miller)'. (p.181).
- Seear, Lynne. 'Joe Rootsey: "The second Namatjira"'. (pp.104–13).
- Stutchbury, Sarah. 'Jack Bell'. (p.76); 'Garry Namponan'. (p.78).
- Sutherland, Krystle. 'Adrian King'. (p.134); 'Roy Melvor'. (p.135).
- Sutherland, Krystle and Albert, Tony. 'Stories from Indigenous interns'. (pp.210–13).
- Were, Ian. 'Paul Bong (Bindur-Bullin)'. (p.176); 'Danie Mellor'. (p.180).
- Video Hits: Art & Music Video.**
(2004, exhibition catalogue, 52pp., illus: col.).
- Staff contributions:
Chambers, Nicholas. "'Pictures came and broke your heart"'. (pp.43–7).
- Weir, Kathryn. 'Jump cut: music video aesthetics'. (pp.37–42).
-
- PUBLICATIONS IN PROGRESS AT 30 JUNE**
- Brought to Light, Volume 2.**
[working title]. (monograph).
- Kuril's Deadly Insights.**
(children's activity book, illus: col.).
-
- CONTRIBUTIONS TO EXTERNAL PUBLICATIONS**
- Arden, Holly. 'Rachael Haynes: Confetti' [review]. *Local Art*, issue 9, December 2003, p.14.
- Arden, Holly. 'Rachael Haynes: Impossible sites' [review]. *Eyeline*, issue 52, Summer 2003–04, p.52.
- Arden, Holly. *Roderick Bunter: 4.30 weekdays* [exhibition catalogue]. Institute of Modern Art, Brisbane, 2003.
- Butt, Zoe. 'Tim Plaisted'. *Realtime*, October–November 2003.
- Cooke, Glenn. 'Bouquets for the Governor's Lady' [part 1]. *Australian Garden History*, vol.15, no.3, November–December 2003, pp.5–8.
- Cooke, Glenn. 'Bouquets for the Governor's Lady' [part 2]. *Australian Garden History*, vol.15, no.4, February–April 2004, pp.12–14.
- Cooke, Glenn. 'Charles Astley: The career of an artist and art teacher on the Darling Downs'. *Australiana*, February 2004, pp.5–13.
- Cooke, Glenn. 'The young Rigby boy'. *The World of Antiques and Art*, August 2003 – February 2004, pp.149–55.
- Cooke, Glenn. 'John Rigby: A career revealed'. *The World of Antiques and Art*, February–August 2004, pp.104–9.
- Cooke, Glenn. 'Queensland's Harvey School'. (pp.26–31); 'Agnes Barker'. (pp.61–2); 'Alice Bott'. (pp.67–8); 'Nell Bott'. (pp.69–70); 'Marjorie Clarke'. (pp.100–1); 'Mary Darling'. (p.124); 'Bessie Devereux'. (pp.138–9); 'Mona Elliott'. (p.148); 'Gladys Fell'. (pp.155–6); 'L. J. Harvey'. (pp.176–81); 'Mervyn Jones'. (p.199); 'Loma Lautour'. (pp.212–3); 'Gloria Lovelock'. (pp.223–4); 'Muriel MacDiarmid'. (pp.235–6); 'Mary Ann McDonald'. (p.237); 'Val McMaster'. (pp.242–7); 'Ida Martin'. (pp.256–7); 'Olive Moase'. (pp.264–5); 'Elisabeth Monz'. (p.266); 'Marian Munday'. (pp.274–5); 'Daisy Nosworthy'. (pp.284–6); 'Maud O'Reilly'. (pp.289–90); 'Lilian Pedersen'. (pp.298–9) and 'Henriette Sinclair'. (pp.336–7). In *Australian Art Pottery 1900 to 1950*, Casuarina Press, Sydney, 2004.

- Ewington, Julie. 'Water'. *Sacred Ground Beating Heart: Works by Judy Watson 1989–2003* [exhibition catalogue]. John Curtin Gallery, Perth/Asialink, Melbourne, 2003, pp.44–54.
- Ewington, Julie. 'In and of the world'. (pp.22–7); 'Fiona Hall'. (pp.93–5). *Face Up: Contemporary Art from Australia* [exhibition catalogue]. Hatje Cantz Verlag, Berlin, 2003.
- Gobé, Claire. 'Douglas Annand: The art of life'. *Antiques and Art in Queensland*, August–November 2003, p.19.
- Gobé, Claire. 'Natalya Hughes: Other paintings'. *Eyeline*, issue 52, Summer 2003–04, p.53.
- Gobé, Claire. 'Queensland Art Gallery: An album of 27 late nineteenth-century photographs'. *The World of Antiques and Art*, issue 66, February–August 2004, p.221.
- Gobé, Claire. 'Chris Handran: The white album'. *Eyeline*, issue 53, Autumn 2004, p.50.
- Goddard, Angela. *Grant Stevens: Danger Zone* [exhibition catalogue]. Straight Out of Brisbane Festival, Brisbane, 2003.
- Goddard, Angela. 'Grant Stevens: Danger zone'. *Summer*, Brisbane, 2004. [unpaginated]
- Goddard, Angela. *On Location* [exhibition catalogue]. Queensland Centre for Photography, Brisbane, 2004.
- Goddard, Angela. *Peter Alwast: Working like a Tiger* [exhibition catalogue]. The Farm Space, Brisbane, 2003.
- Goddard, Angela. 'Scott Redford'. *Temperature: Contemporary Queensland Sculpture* [exhibition catalogue]. Museum of Brisbane, Brisbane, 2004, p.40.
- Gunning, Judy. 'The Story of "Story Place"'. *Quill* (Australian Library and Information Association Queensland Branch), 103 [9], October 2003 <www.alia.org.au/members-only/groups/quill/issues/2003.9>
- Hawker, Michael. 'William Robinson gives a series of pastel works to Queensland Art Gallery'. *Antiques and Art in Queensland*, November 2003 – March 2004, p.20.
- Kirker, Anne. 'Art for social change: Kamin Lertchaiprasert and a new Chiang Mai enterprise'. *Eyeline*, no.51, Winter 2003, pp.47–9.
- Kirker, Anne. 'Bruce Reynolds: Paradoxically placed'. *Temperature: Contemporary Queensland Sculpture* [exhibition catalogue]. Museum of Brisbane, Brisbane, 2004, p.42.
- Kirker, Anne. 'Museum of Brisbane' [review]. *Museums Australia*, vol.12, no.3, February 2004, p.28.
- Kirker, Anne. 'On Collecting: Carole Shepherd's Museum of Cultural Anxiety'. *Art New Zealand*, no.111, Winter 2004, pp.58–61, 99.
- Mallos, Melina and Cull, Tamsin. 'Find the Extra Ordinary'. *Antiques and Art in Queensland*, November 2003 – March 2004, p.22.
- Massy, John. *Esther Austin Australian Landscapes* [exhibition catalogue]. Logan Art Gallery, Logan Central, 2004.
- McColm, Donna. 'Painting might not be dead: Dan Brock, subject to huge activity'. *Local Art*, issue 6, August 2003, pp.6–7.
- McColm, Donna. 'Revisions and new editions: Mike Kelley and Paul McCarthy'. *Eyeline*, vol.51, Autumn–Winter 2003, p.56.
- McColm, Donna. 'Yenda Carson: Organic sculptures from architectural grounds'. *Temperature: Contemporary Queensland Sculpture* [exhibition catalogue]. Museum of Brisbane, Brisbane, 2004, p.18.
- McDougall, Ruth. 'A room of one's own'. *Annie Hogan* [exhibition catalogue]. Institute of Modern Art, Brisbane, 2003.
- McDougall, Ruth. 'Readymade'. *Readymade* [exhibition catalogue]. Institute of Modern Art, Brisbane, 2003.
- McDougall, Ruth and Moon, Diane. 'Syaw: Peppimenarti artist Regina Wilson'. *Object*, no.43, 2003, pp.38–9.
- Raffel, Suhanya. 'A contemporary focus'. *Arts of Asia*, vol.33, no.6, November–December 2003, pp.74–80.
- Raffel, Suhanya. *One Dances* [exhibition catalogue]. Grantpirrie Gallery, Sydney, March 2004.
- Ravenswood, Kate. 'Chez Baker'. *Temperature: Contemporary Queensland Sculpture* [exhibition catalogue]. Museum of Brisbane, Brisbane, 2004, p.13.
- Walsh, Julie. 'Furnished Spaces'. *Temperature: Contemporary Queensland Sculpture* [exhibition catalogue]. Museum of Brisbane, Brisbane, 2004, p.58.
- Walsh, Julie. *Kim Demuth: Close Encounters* [exhibition catalogue]. Institute of Modern Art, Brisbane, 2003.
- Were, Ian. 'A Tale of Three Cities'. *Craft Arts International*, issue no. 60, March 2004, pp.49–51.
- Were, Ian. 'Critic's Choice' [5 of the best books available from the Queensland Art Gallery Store]. *State of the Arts*, Sydney, April – June 2004, p.21.
- Were, Ian. 'New Material as New Media: The Fabric Workshop and Museum' [book review]. *Object*, September 2003, no.43, p.89.
- Were, Ian. Interview. *Artworkers Alliance Newsletter*, Winter 2003, p.13.
- Young, Jacklyn. 'Allied forces: libraries and museums collaborating on World War II provenance research'. *Art Libraries Journal*, ARLIS/UK and Ireland, vol.29, no.2, pp.33–6.

PAPERS PRESENTED

(Unpublished)

- Aleksanian, Alyssa. 'Treatment of a Large-scale Victorian Painting by F.W. Calderon'. Australian Institute for the Conservation of Cultural Materials, 9th Symposium, Hobart, 18–20 March 2004.
- Arden, Holly. Address to Year 12 Students. Future Leaders Forum, Queensland University of Technology, Brisbane, 19 April 2004.
- Arden, Holly and Gobé, Claire. 'Australian Women Artists'. Queensland Rural Women's Network 10th Anniversary Conference, Mundubbera, 11 October 2003.
- Butt, Zoe. 'Exclusion, Inclusion'. Comparative Contemporaries Symposium, The Substation, Singapore, 18–19 October 2003.
- Carter, Anne. 'Fluorescent Paint: A Case Study'. Australian Institute for the Conservation of Cultural Materials, 9th Symposium, Hobart, 18–20 March 2004.
- Clark, Andrew and Seear, Lynne. 'Sustaining the Children's Exhibitions at the Queensland Art Gallery'. Off the Wall: Sustaining Good Practice, Regional Galleries Seminar Program 2004, Queensland Art Gallery, Brisbane, 31 May 2004.
- Cooke, Glenn. 'The Nine Living Muses of Great Britain: Elizabeth Montague and Her Blue Stocking Circle'. AANZ Conference, Canberra, 5–6 December 2003.
- Cooke, Glenn. 'Heritage, Art and the Family Historian'. Genealogical Society of Queensland Inc., Southern Suburbs Branch, Brisbane, 29 April 2004.
- Ewington, Julie. 'Emiko Kasahara: *La charme*'. Biennale of Sydney, Art Gallery of New South Wales, 5 June 2004.

WEBSITES PRODUCED BY THE GALLERY

- Lost and Found**
<www.qag.qld.gov.au/lostandfound>
- Pop: The Continuing Influence of Popular Culture on Contemporary Art**
<www.qag.qld.gov.au/pop>
- Prime 04: art+music+video**
<www.qag.qld.gov.au/prime04>
- Story Place: Indigenous Art of Cape York and the Rainforest**
<www.qag.qld.gov.au/storyplace>

VIDEOS PRODUCED BY THE GALLERY

- Ah Xian**
Duration: 7 minutes, 2003
- Indigenous Intrudaz**
Duration: 5 minutes, 2004
- Prime 04: art+music+video**
Duration: 9 minutes, 2004
- Story Place: Indigenous Art of Cape York and the Rainforest**
Artist Interviews [14 artist interviews].
Duration: 70 minutes, 2003
'Ngamp yotam ma kee antan' (Working together to achieve a goal)
Duration: 7:30 minutes 2004
Opening Celebrations.
Duration: 16 minutes, 2003
The 'Story Place' Story.
Duration: 11 minutes, 2003

BOARD OF TRUSTEES AND EXECUTIVE MANAGEMENT TEAM

STAFF PROFILE

TERM OF APPOINTMENT

CHAIR

Mr W Goss 24/6/02 to 23/6/05

DEPUTY CHAIR

Mrs A Gamble Myer 24/6/02 to 23/6/05

MEMBERS

Mr T Fairfax, AM 24/6/02 to 23/6/05

Mr M Gray 24/6/02 to 23/6/05

Ms M Hansen 12/6/03 to 11/6/06

Dr M Low 24/6/02 to 23/6/05

Ms K McGill 24/6/02 to 23/6/05

Ms S Purdon 31/1/02 to 30/1/05

Mr B Robinson 24/6/02 to 23/6/05

Ms J Watson (resigned 29/3/04) 12/6/03 to 11/6/06

(Section 6 (1) of the *Queensland Art Gallery Act 1987* provides for the Board to consist of the number of members appointed by the Governor-in-Council)

EXECUTIVE MANAGEMENT TEAM

The Executive Management Team provides strategic direction and manages the Gallery's operations and programs.

DIRECTOR

Mr Doug Hall, AM

ASSISTANT DIRECTOR, CURATORIAL & COLLECTION DEVELOPMENT

Ms Lynne Seear

ASSISTANT DIRECTOR, MANAGEMENT & OPERATIONS

Mr Alan Wilson

ASSISTANT DIRECTOR, PUBLIC PROGRAMS

Mr Andrew Clark

Permanent	Temporary	Casual	Trainee
-----------	-----------	--------	---------

DIRECTORATE

Directorate	2			
-------------	---	--	--	--

Building & Development	2	1		
------------------------	---	---	--	--

Foundation	1	2		
------------	---	---	--	--

CURATORIAL & COLLECTION DEVELOPMENT

Administration	1	2		
----------------	---	---	--	--

Curatorial	8	11		2
------------	---	----	--	---

Registration	4	1		
--------------	---	---	--	--

Conservation	6	3	1	1
--------------	---	---	---	---

Collection Support	3	6		
--------------------	---	---	--	--

Information & Publishing Services	6	5	1	1
-----------------------------------	---	---	---	---

PUBLIC PROGRAMS

Administration	2			
----------------	---	--	--	--

Audience Development & Friends	2	1		
--------------------------------	---	---	--	--

Design	1	3		
--------	---	---	--	--

Promotions & Events	4	2		
---------------------	---	---	--	--

Access, Education & Regional Services	2	6		
---------------------------------------	---	---	--	--

Workshop	2	2		
----------	---	---	--	--

Exhibitions	4	3	1	
-------------	---	---	---	--

MANAGEMENT & OPERATIONS

Administration	5			
----------------	---	--	--	--

Finance & Operations	3	1		
----------------------	---	---	--	--

Gallery Store	4	1	2	
---------------	---	---	---	--

Protection & Services	32		3	
-----------------------	----	--	---	--

Information Technology	4	1		
------------------------	---	---	--	--

TOTAL

98	51	8	4
----	----	---	---

OVERSEAS TRAVEL

NAME OF OFFICER AND POSITION	DESTINATION	REASON FOR TRAVEL	AGENCY COST \$	\$•
Zoe Butt Curatorial Assistant (Asian Art)	Singapore, Thailand	To participate in, and present a paper at, the symposium, Comparative Contemporaries; and to meet with various art officials from universities.	2568	1500
Andrew Clark Assistant Director (Public Programs)	Italy, USA	To accompany transportation of the art work <i>Trois danseuses á la classe de danse (Three dancers at a dancing class)</i> c.1888–90 by Edgar Degas to the Palazzo dei Diamanti in Ferrara, Italy; research artists and best-practice display and interpretive methods for works for the Gallery's Collection, and their subsequent display in the Queensland Gallery of Modern Art; meet with artists to discuss their involvement in future Gallery projects.	8909	9200
	New Zealand	To conduct research for the Queensland Gallery of Modern Art and the Australian Centre of Asia-Pacific Art.	2087	-
Naomi Flatt Managerial Research Assistant	Italy, France, UK	To participate in an internship at the Peggy Guggenheim Collection in Venice; and to visit various galleries in France and the United Kingdom.	6000	11 330
Doug Hall Director	Hong Kong, USA, China, Japan	Appointments related to gifts of art works, possible donations, potential acquisitions, exhibition development, and alliances with like-minded institutions.	22 463	-
Anne Kirker Senior Curator, Special Projects (QGMA)	USA	To undertake key research for the major survey exhibition on Californian art for the Queensland Gallery of Modern Art.	9294	-
Bruce McLean Curatorial Intern (Indigenous Australian Art)	Japan	To present lectures for the Australian Embassy, Tokyo and the Australian Arts Festival Japan 2003 to coincide with the 'Spirit Country' exhibition.	205	3876
Anna Marsden Head of Development	UK, USA	To undertake a Winston Churchill Memorial Trust Fellowship to investigate fundraising programs in art museums in the United States and United Kingdom.	5469	15 050
Fiona Mowat Assistant Registrar	Belgium	To accompany transportation of the art work <i>Young woman in a fur wrap (after Titian)</i> c.1629–30 by Peter Paul Rubens to the Rubenshuis in Antwerp.	-	8894
Tiffany Noyce Associate Registrar	Belgium, UK	To accompany transportation of the art work <i>Young woman in a fur wrap (after Titian)</i> c.1629–30 by Peter Paul Rubens to the Rubenshuis in Antwerp; and to visit the Tate Gallery's off-site storage facility to assist in planning for the art work storage area of the Queensland Gallery of Modern Art.	2020	8268
Maud Page Curator (Pacific Art)	New Zealand	To research current developments in contemporary Pacific art and scholarship, and to conduct background research in preparation for the forthcoming Asia-Pacific Triennial of Contemporary Art.	3880	-
Amanda Pagliarino Conservator (Sculpture)	Canada	To attend the Preservation of Electronic Records: New Knowledge and Decision-making symposium at the Canadian Conservation Institute, Ottawa.	6549	-
Kathryn Weir Head of Cinema (QGMA)	Turkey, USA, Canada	To attend the prestigious International Committee of the International Council of Museums, for Museums and Collections of Modern Art (CIMAM), General Meeting and Conference; and to visit institutions to gain increased awareness of strategic issues affecting the development of the technical facilities, policy and programming for the new cinémathèque.	9395	-
• CONTRIBUTION FROM OTHER AGENCIES OR SOURCES \$				

STATISTICAL SUMMARY

NUMBER OF BOARD OF TRUSTEES MEETINGS

8

ATTENDANCE

Total Gallery attendance	404 412
Total attendance at exhibitions in regional Queensland	29 728

EXHIBITIONS AND SERVICES – REGIONAL QUEENSLAND

Total travelling exhibitions	3
Exhibition venues	9
Total exhibition attendances	29 728
Total visits by Gallery staff to regional Queensland	114

EXPLORING OUTBACK: ARTISTS' RESPONSES TO LIFE ON THE LAND

Final 2 of 10 venues (45 works)	
Rockhampton Art Gallery	1899
Artspace Mackay	5817
Total attendance final 2 venues	7716

POP: THE CONTINUING INFLUENCE OF POPULAR CULTURE ON CONTEMPORARY ART

First 6 of 8 venues (48 works)	
Logan Art Gallery	2270
Toowoomba Regional Art Gallery	6666
Artspace Mackay	4770
Redcliffe City Art Gallery	1950
Bundaberg Arts Centre	1491
Gladstone Regional Art Gallery and Museum	3025
Total attendance first 6 venues	20 172

STORY PLACE: INDIGENOUS ART OF CAPE YORK AND THE RAINFOREST – REGIONAL QUEENSLAND TOUR

First of 7 venues (49 works)	
Hervey Bay Regional Gallery	1840

ACQUISITIONS

Asian art	3
Australian art	20
Contemporary Asian and Pacific art	34
Contemporary Australian art	34
Indigenous Australian art	119
International art	23
Total	233
Acquired through Foundation	152

EDUCATION – ACCESS

Students participating in booked tours (guided and unguided)	37 257
Schools receiving Education Brochure	1712
Children's activities and workshops	72
Total attendance	3119
Special children's programs/events total attendance	135 942
Youth programs total attendance	4112
Tertiary programs total attendance	548
Adult public programs total attendance	4270

PHOTOGRAPHIC REPRODUCTIONS AND COPYRIGHT CLEARANCES

External reproduction requests (144 works)	72
Internal reproduction requests (219 works)	40
Internal copyright clearances sought (155 works)	29

PUBLICATIONS

Published by the Gallery	14
In progress at 30 June	2
Staff contributions to external publications	45
Papers presented (unpublished)	15
Websites	4
Videos	7

WEBSITE USAGE

Queensland Art Gallery * < www.qag.qld.gov.au >	
Total hits	8 865 116
Page views	1 200 093
User sessions	387 961

*Includes the main Queensland Art Gallery website and all exhibition websites hosted within the <www.qag.qld.gov.au> domain, but excludes the Gallery Store website.

VOLUNTEERS

Curatorial volunteers	3
Information Officer volunteers	26
Library volunteers	8
Children's program volunteers	3
Survey volunteers	8
Volunteer Guides	130

CORPORATE GOVERNANCE

ETHICS AND CODE OF CONDUCT

The Gallery's Code of Conduct is based on the ethics principles and obligations outlined in the *Public Sector Ethics Act 1994* and was developed following consultation with all staff.

New employees receive the Code of Conduct as part of their commencement kit and the Code is available to all staff on the Gallery's intranet. The Code applies to all paid employees as well as volunteers.

Persons other than staff members can inspect the Code, free of charge, upon request at the Gallery's Research Library, with extracts or a full copy available free of charge.

During the year, a technical review of the Code was undertaken and a number of briefing/training sessions were conducted for all volunteers.

EQUAL EMPLOYMENT OPPORTUNITY

Strategies to achieve the objectives contained in the Gallery's Equal Employment Opportunity (EEO) Management Plan 2003-05 continued to be implemented and monitored against target dates during the year.

Key strategies included:

- + Conducting career planning sessions
- + 12-month contract employment for two Indigenous staff who completed traineeships
- + Continue online anti-discrimination training and certification for new supervisors and managers
- + Conducting briefing sessions on job application and interview skills for Gallery staff
- + Ensuring access to human resource policies through the intranet and providing printed copies in the Gallery's Research Library.

HUMAN RESOURCE ISSUES

The Gallery:

- + Continued and expanded a Change Management Program for staff in preparation for the Gallery's transition to a two-site organisation
- + Continued the recruitment of additional staff to undertake planning and program/services preparation for the Queensland Gallery of Modern Art
- + Continued the traineeship program
- + Continued online anti-discrimination training for supervisors
- + Provided a range of staff training and professional development
- + Developed a whole-of-Gallery training and development plan for 2004-05
- + Developed an EEO employer of choice information package for job applicants
- + Undertook a major revision of the Volunteer Handbook
- + Conducted a series of awareness/information sessions for volunteers regarding the revised Volunteer Handbook and Code of Conduct.

RISK MANAGEMENT

Due to the size of the Queensland Art Gallery, a separate risk management committee has not been established. However, the Gallery's Executive Management Team, comprising the Director and three Assistant Directors, is responsible for the implementation and monitoring of the Gallery's risk management process.

During the year, the Gallery adopted a risk management policy which is based on appropriate internal controls. Gallery-wide risk registers were developed providing a foundation for the Gallery's Disaster Preparedness and Recovery Plan.

Gallery representatives also participated in the Government's Agency Preparedness program.

AUDIT COMMITTEE

The Board of Trustees Audit Committee, consisting of Mr Tim Fairfax, AM, Mr Wayne Goss, Mrs Ann Gamble Myer (Trustees) and Mr Doug Hall, AM (Director), met on one occasion. An internal audit was undertaken to assess and document the operational procedures of the Gallery Store.

WORKPLACE HEALTH AND SAFETY

The Gallery has a Workplace Health and Safety Committee consisting of workplace health and safety representatives elected by staff, five Workplace Health and Safety Officers, the Assistant Director (Management and Operations), and the Head of Exhibitions and Display. The Committee met on six occasions during the year and:

- + facilitated training of representatives in health and safety issues
- + monitored online training for all staff
- + conducted regular inspections of work areas
- + responded to all reported/identified hazards.

The Gallery is also represented on the Queensland Cultural Centre's Workplace Health and Safety Committee which met on six occasions.

WHISTLEBLOWERS PROTECTION ACT

There were no disclosures received over the reporting period.

CONSULTANCIES

During 2003-04, the Gallery used the services of consultants to carry out specific tasks where their expertise was required:

CATEGORY	\$
Management	\$ 88 600
Professional – Technical	\$ 1000
TOTAL	\$ 89 600

BOARD OF TRUSTEES COSTS

In 2003-04, meeting fees and on-costs of Board members totalled \$19 344.

MAJOR INVESTMENTS AND BORROWINGS

There were no major investments or borrowings during the year.

FINANCIAL AND OPERATIONAL PERFORMANCE SYSTEMS

The Gallery's financial systems consist of:

- + Finance 1 and Great Plains's eEnterprise are used primarily for processing financial data and obtaining reports.
- + Whole-of-government financial information is reported using the Queensland Government's Tridata system.
- + The Gallery Store uses Booknet as their point-of-sale system.

Reports on operational performance against declared goals, strategies and benchmarks are prepared and presented at each meeting of the Board of Trustees. Quarterly, non-financial performance reports measured against declared targets are submitted to Arts Queensland and Queensland Treasury.

ENTITIES CONTROLLED

The Queensland Art Gallery Foundation was established in 1979 by the Queensland Art Gallery Board of Trustees to raise corporate and private funding to support the growth of the art collection and exhibition programs. The Gallery provides all the infrastructure support and meets all operational costs of the Foundation. For the purposes of the *Financial Administration and Audit Act 1977*, the Foundation is an entity controlled by the Queensland Art Gallery Board of Trustees.

Financial reports are prepared by the Gallery for submission to the Foundation's Council. The Foundation produces its own annual report and its books and accounts were audited by the Queensland Audit Office.