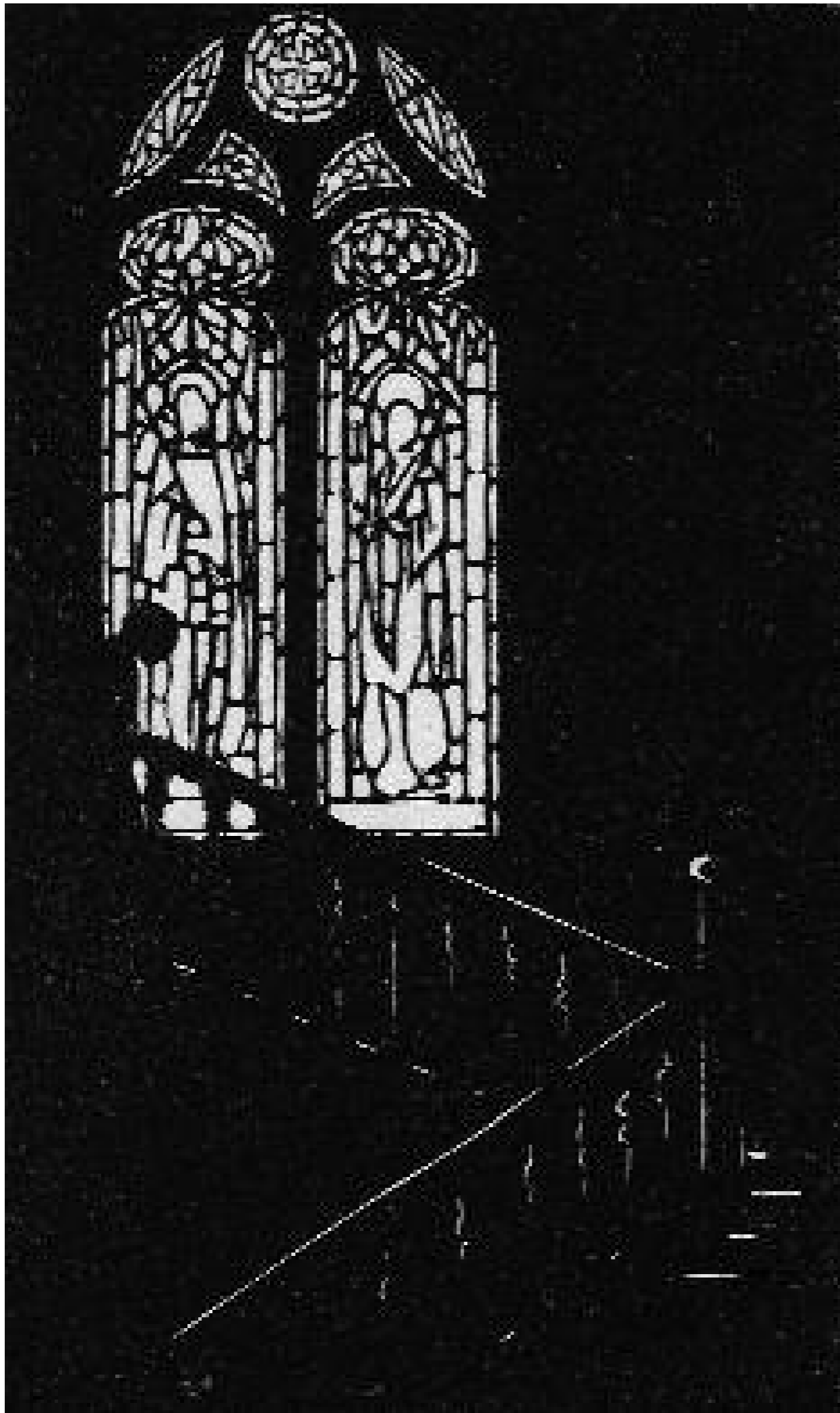


APPENDIXES

Ethel Spowers
Australia 1890–1947
Staircase window c.1925
Woodcut, ed. of 40, 14.8 x 8.9cm (comp.)
Purchased 2005



ORGANISATIONAL PURPOSE AND RESPONSIBILITIES

ACT AND BOARD OF TRUSTEES

The Queensland Art Gallery Board of Trustees is the governing body of the Queensland Art Gallery and draws its powers from the *Queensland Art Gallery Act 1987*. The Act provides that the Board is to consist of the number of members appointed by the Governor-in-Council. Trustees are appointed for a term of not more than three years, and are eligible for reappointment as Trustees at the expiration of their respective terms.

During the 2005–06 year, the Board met on eight occasions.

FUNCTIONS OF THE BOARD

- (a) to control, manage and maintain the Art Gallery and each branch thereof and all property in the possession of the Board; and
- (b) to minister to the needs of the community in any or all branches of the visual arts by
 - (i) displaying works of art; and
 - (ii) promoting artistic taste and achievement through the illustration of the history and development of the visual arts; and
 - (iii) promoting and providing lectures, films, broadcasts, telecasts, publications and other educational or cultural instruction or material; and
 - (iv) promoting research; and
- (c) to control and manage all land and premises vested in or placed under the control of the Board; and
- (d) to restore and repair works of art in the possession of the Board; and
- (e) to frame and package, and manufacture display materials for, works of art in the possession of the Board; and
- (f) to encourage artistic achievements by artists resident in Queensland; and
- (g) to perform the functions given to the Board under another Act; and
- (h) to perform functions that are incidental, complementary or helpful to, or likely to enhance the effective and efficient performance of, the functions mentioned in paragraphs (a) to (g); and
- (i) to perform functions of the type to which paragraph (h) applies and which are given to the Board in writing by the Minister.

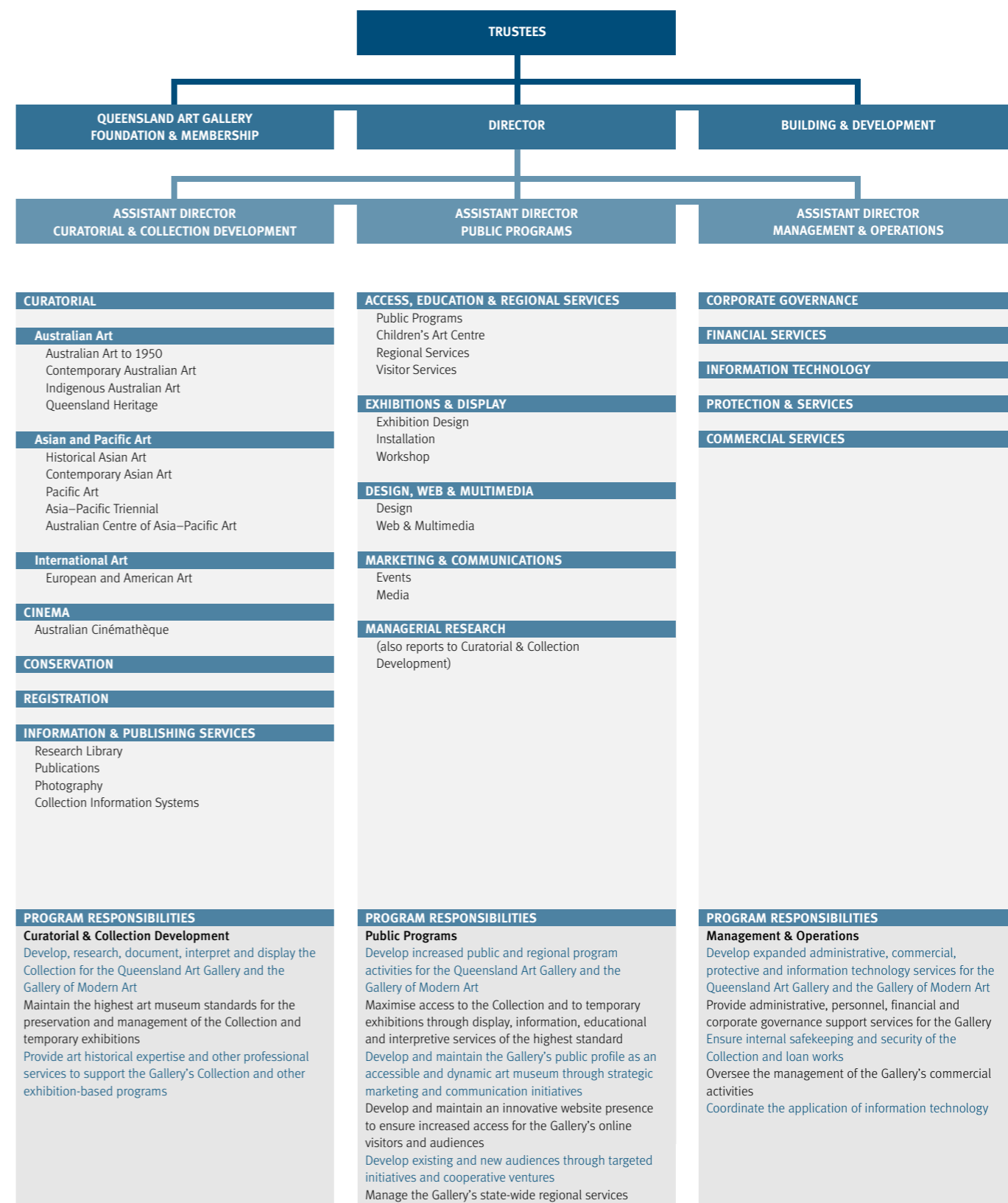
MINISTERIAL DIRECTIONS

The Minister for the Arts gave no directions to the Board of Trustees during the year.

POWERS OF THE BOARD

- (1) For performing its functions, the Board has all the powers of an individual and may, for example:
- (a) enter into arrangements, agreements, contracts and deeds; and
 - (b) acquire, hold, deal with and dispose of property; and
 - (c) engage consultants; and
 - (d) appoint agents and attorneys; and
 - (e) charge, and fix terms, for goods, services, facilities and information supplied by it; and
 - (f) do anything else necessary or desirable to be done in performing its functions.
- (2) Without limiting subsection (1), the Board has the powers given to it under this or another Act.
- (3) The Board may exercise its powers inside and outside Queensland, including outside Australia.
- (4) In this section — ‘power’ includes legal capacity.

PROGRAM STRUCTURE 2005–06



STRATEGIC DIRECTION

VISION

+ Increased quality of life for all Queenslanders through enhanced access, understanding and enjoyment of the visual arts and furtherance of Queensland's reputation as a culturally dynamic state.

MISSION

+ To be the focus for the visual arts in Queensland and a dynamic and accessible art museum of international standing.

KEY STRATEGIC DIRECTIONS

- + Enhance the Gallery's profile through greater emphasis on its Collection, increased focus on children and youth programs, and tours of diverse exhibitions and education programs to regional Queensland centres.
- + Maintain focus on modern and contemporary Australian and international art, Indigenous Australian art and contemporary art of the Asia-Pacific region in the expansion to a two-site institution.

KEY PRIORITIES AND INITIATIVES

- + Continue to promote and present the Gallery as a centre of international standing specifically in the areas of visual arts practice and audience engagement with the visual arts.
- + Continue to develop exhibition, education and interpretive programs for people of all ages.
- + Attract new audiences through a range of innovative and diverse programs.
- + Improve access to the Collection and related visual arts information irrespective of where people live in Queensland.
- + Present a range of exhibitions drawn from the Collection.
- + Present a wide-ranging program of exhibitions from other national and international institutions.
- + Collect and exhibit Australian and international art including the art of Aboriginal and Torres Strait Islander peoples and the art of the Asia-Pacific region.
- + Continue and expand partnerships with Education Queensland and tertiary education providers to assist in the development and delivery of programs and services.
- + Focus on research, scholarship and publishing; creative partnerships and alliances; residencies, internships, grants and innovative professional practice.
- + Expand and strengthen important partnerships and alliances between the Gallery and key international museums and organisations, in relation to professional opportunities.
- + Maintain and enhance the Gallery's services to regional and remote Queensland through exhibitions, educational services, new technologies and professional development and consultancies.
- + Continue to develop and expand the support of the private sector for the Gallery's activities.
- + Maximise the Gallery's contribution to Government outcomes and priorities through appropriate planning and development of the Gallery of Modern Art and the refurbishment of the existing Gallery.

GOALS

The Gallery focused on the following goals to ensure its contribution to the attainment of the Government's community outcomes and priorities for Queensland (see p.45). These goals will remain current for the Gallery's Strategic Plan covering the next five-year planning cycle, 2006-11:

- + Develop, manage and conserve the Collection to the highest art museum standards for the benefit and enjoyment of present and future users.

INITIATIVES AND SERVICES

- + Display and promote the Collection and the Gallery's facilities, and provide access to exhibitions, educational services and interpretive programs of excellence to a diversity of cultures and publics with particular attention to the principles of lifelong learning.
- + Develop and manage an exhibitions program to the highest art museum standards, which extends to regional and remote Queensland, for the benefit and enjoyment of present and future audiences.
- + Continue to develop services provided to regional areas in order to support such communities in the development of their unique cultural assets and distinctive identities, while also benefiting from cultural exchange with such regions.
- + Ensure the Gallery's building and strategic development, including the Gallery of Modern Art Project, meet the needs of the community and the Gallery.
- + Provide assistance and encouragement to young emerging artists and professional development and employment opportunities for young persons seeking a career in the visual arts.
- + Continue to develop an organisational culture that articulates best practice throughout the Gallery's operations.
- + Develop, where appropriate, productive partnerships with other Government agencies and with the private, education and community sectors.
- + Provide museum professionals and Queensland Art Gallery staff with opportunities for professional development, so as to create a community of highly skilled and educated people.

OPERATIONAL PLAN

The Gallery's Operational Plan underpins its Strategic Plan and documents the major activities undertaken during the 12-month period from 1 July 2005 to 30 June 2006.

COLLECTION

- The Gallery's Collection currently consists of 12 254 works of art. Works are acquired each year in accordance with the following priorities in the Collection Development Policy endorsed by Trustees:
- + Acquire works of art to build, refine and enhance the Collection.
- + Manage the display of the Collection to provide maximum access through permanent displays and regular rotations.
- + Implement a schedule of Collection-based displays and activities that reflects Collection strengths and developments, including tours throughout regional Queensland.
- + Maintain a strategic focus on works by Queensland-born or Queensland-based artists, and on art of relevance to Queensland's social and cultural diversity.
- + Pursue a leadership role in the acquisition of contemporary art of the Asia-Pacific region.
- + Provide and maintain complete and accurate information on the Collection and objects in the temporary custody of the Gallery.
- + Provide and maintain a level of physical safety for the Collection consistent with current international museum standards.
- + Establish and implement appropriate practices and standards for the conservation of the Collection.

INITIATIVES AND SERVICES

- + Continue to foster research into the Collection and communicate the results through interpretive programs for a diversity of audiences.
- + Continue to develop and implement integrated public education programs to support the Collection and exhibitions.
- + Investigate and implement enhanced public access to the Collection and the innovative delivery of education and information services to Queensland including the development and enhancement of the Gallery's website.
- + Organise and present exhibitions at the Queensland Art Gallery.
- + Develop, coordinate and tour exhibitions to regional Queensland.
- + Continue to advise and consult with the education sector in urban and regional Queensland.
- + Continue to develop a leading research facility to foster research into, and the development of, the Asia-Pacific collection and major exhibitions/projects.
- + Continue to provide consultancy services and professional support to local government-funded regional galleries.
- + Continue to provide professional development opportunities for arts workers in regional Queensland.
- + Continue to support Gallery touring exhibitions with a range of related education and information resources and programs.

EXHIBITIONS AND AUDIENCES

- + Organise and present exhibitions at the Queensland Art Gallery.
- + Develop, coordinate and tour exhibitions to regional Queensland.
- + Develop, coordinate and tour exhibitions that showcase the work of regional Queensland artists.
- + Continue to develop collaborative and consultative procedures for developing exhibitions and supporting programs to travel to regional Queensland.

GALLERY OF MODERN ART

- + Coordinate planning for developing the programming for the Gallery of Modern Art.
- + Develop community liaison activities addressing the Gallery of Modern Art.
- + Consult with regional Queensland communities and arts organisations throughout the development of the Gallery of Modern Art.
- + Continue the design and construction documentation for the Gallery of Modern Art.
- + Promote the Gallery of Modern Art as a key component of the Gallery's development strategy.

PROGRAMS OF ASSISTANCE

- + Conduct annual awarding of scholarships and bursaries.
- + Continue youth training and apprenticeship program.

ORGANISATIONAL CULTURE

- + Facilitate ongoing series of inter-section workshops to ensure collaborative interaction.
- + Undertake debriefings and evaluations and communicate outcomes to staff.
- + Identify and support training and professional development opportunities for staff.
- + Implement strategies contained in the Equal Employment Opportunity Plan.

MEETING THE GOVERNMENT'S COMMUNITY OUTCOMES AND PRIORITIES FOR QUEENSLAND

Relationship between the Gallery's goals and outputs and the Government's community outcomes and priorities

The Queensland Art Gallery, together with the Gallery of Modern Art, deliver the output, 'Access to the Visual Arts (Queensland Art Gallery)', and contribute to the Government's outcomes and priorities as indicated below.

| Government Outcomes and Priorities | Queensland Art Gallery / Gallery of Modern Art Priority Outputs |
|--|---|
| STRENGTHENING QUEENSLAND COMMUNITIES | |
| + Safe and secure communities. + Healthy, active individuals and communities. + A fair, socially cohesive and culturally vibrant society. | + Continue to preserve, document and build the Gallery's Collection in order to promote enhanced understanding and recognition of Queensland's cultural heritage. + Provide enhanced, accessible and innovative programs, products and services for all Queenslanders. + Promote reconciliation with Indigenous Queenslanders through programs, services and consultative processes. + Ensure the cultural maintenance of Indigenous art works and follow appropriate protocols for management and display. + Utilise partnerships and alliances to create professional and social development opportunities in regional Queensland. + Contribute to the liveability of cities, towns, regions and remote communities through the provision of greatly increased cultural products and services. + Provide enhanced programs, products and services that value and raise community appreciation of diversity through cultural knowledge and awareness. |
| BUILDING QUEENSLAND'S ECONOMY | |
| + A strong diversified economy. + A community of well-skilled and knowledgeable people. + Improved standard of living for all Queenslanders. | + Develop education programs for children, youth, adults and mature adults with an emphasis on the principles of lifelong learning. + Develop a highly skilled, adaptable workforce, with an emphasis on providing opportunities for artists, scholars, educators, curators and young museum professionals. + Utilise digital and other innovative technologies to improve knowledge of, and access to, the Gallery's Collection and to Gallery programs and services. + Provide opportunities for skills enhancement and professional development to colleagues in regional Queensland. + Create an expanded, sustained workforce to meet the product and service delivery needs of the new 'two-site, one-vision' institution. + Attract local, national and international visitors to Brisbane and regional centres, thus adding value to them as destinations. + Provide educational, cultural and knowledge products and services to the people of Queensland. |

OUTPUT/PERFORMANCE STATEMENT 2005-06

| Measures | Notes | Published Targets (as per MPS*) | Actual Achievement to 30 June 2006 |
|--|-------|---------------------------------|------------------------------------|
| QUANTITY | | | |
| + Number of exhibitions presented | | 16 | 16 |
| + Number of Collection-based exhibitions presented | | 8 | 6 |
| + Number of exhibitions touring regional Queensland | | 2 | 2 |
| + Total attendance at Queensland Art Gallery | | 300 000 | 325 730 |
| + Number of internships/traineeships | 1 | 2 | 0 |
| QUALITY | | | |
| + Level of satisfaction of audiences with Collection-based displays, programs and activities | | 90% | 99% |
| + Increase in loan requests and requests for reproductions from the Collection from external agencies | 2 | 0% | 0% |
| + Collection stored safely and securely to international museum standards | 3 | 100% | 99% |
| + Extent of client satisfaction with exhibition program | | 90% | 94% |
| + Number of trainees/apprentices completing traineeships | 4 | 100% | 100% |
| LOCATION | | | |
| + Travelling exhibitions through regional Queensland | | 2 | 2 |
| + Number of regional locations receiving travelling exhibitions and education, interpretive and information services | | 25 | 41 |

*Ministerial Portfolio Statement

- NOTES**
- 1 Proposed traineeships for 2005-06 did not proceed due to demands of planning for GoMA.
 - 2 There was no increase due to a moratorium on loan requests while planning GoMA.
 - 3 A small number of works are provided appropriate levels of environmental and security controls but are not accommodated in preferred storage furniture. This situation will eventually be resolved when the Collection has access to the storage facility within GoMA.
 - 4 All trainees from the 2004-05 intake successfully completed their traineeships during 2005-06, hence the 100% completion rate for 2005-06.

COLLECTION ACQUISITIONS

DONORS

DONATIONS AND GIFTS THROUGH THE QUEENSLAND ART GALLERY FOUNDATION

Annabel Anderson
 Anonymous donor
 Carolyn Brennan
 Bequest of Grace Davies and Nell Davies
 Estate of Sally Welch Edwards
 Estate of Jessica Ellis
 Jan and Spencer Grammer
 Barbara and Peter Grant
 May Heck
 Estate of Margaret Hockey, OAM
 Estate of Lawrence F King
 Bunny McConnell
 Macquarie Bank Foundation
 Estate of Ouida Marsten
 Dr Cathryn J Mittelheuser, AM
 Angus Norrie
 John Potter and Roz MacAllan
 The Queensland Art Gallery Foundation Blackman Art Appeal
 James C Sourris
 The Thomas Foundation
 Beverley Tracey
 Judith Wright
 Xstrata Coal Pty Ltd

CULTURAL GIFTS PROGRAM

Annabel Anderson
 Anonymous donor
 Barbara and Peter Grant
 Judith Wright

GIFTS

John Pule

BEQUESTS

Grace Davies and Nell Davies

COMMISSIONS

The Thomas Foundation

PURCHASED THROUGH BEQUESTS AND FUNDS

The Queensland Government's Gallery of Modern Art Acquisitions Fund
 The Queensland Government's special Centenary Fund

GIFTS, BEQUESTS, PURCHASES

AI WEIWEI

China b.1957
Feet 2005
 Fragments of stone sculpture (from the Northern Wei dynasty 386–535 and Northern Qi dynasty 550–577) with individual wooden plinths and wooden table
 14 components: 88 x 220 x 68cm (installed)

Table with two legs 2004
 Reassembled wooden table (Qing dynasty 1644–1911)
 65 x 184 x 119cm

Table with two legs on the wall 2005
 115.5 x 95.2 x 120cm

Painted vases 2006
 Synthetic polymer paint on ceramic (Neolithic period)
 14 pieces ranging from 17 x 21cm (diam.) to 33.7 x 29 x 27cm

Dropping a Han dynasty urn 1995
 Gelatin silver photographs, A.P.
 Three sheets: 180 x 169.5cm (each comp.)
 Acc. 2006.013–017

Pillar through round table 2004–05
 Pair of elmwood half tables assembled into a single table (Qing dynasty 1644–1911), bisected horizontally by an ironwood pillar (Qing dynasty), on two ironwood pillar fragments
 142 x 513 x 117cm (installed)
 Purchased 2006. The Queensland Government's Gallery of Modern Art Acquisitions Fund
 Acc. 2006.238a–c

AUSTRALIAN SCHOOL View from Main Range near Spicers Peak, Queensland, Australia c.1880s
 Watercolour
 28 x 48.2cm
 Acc. 2005.328
 Purchased 2005

Handprints on cement construction 1990
 Charcoal, ash, cement and paper on wooden pole with metal and nails
 200 x 101.5 x 14cm (overall)

Trio 1991
 Charcoal, earth, pigment, ashes and glue on paper
 Triptych: 100 x 70cm (each sheet)

BALDESSARI, JOHN
 United States b.1931
Prima facie (second state): Apprehensive 2005
 Archival digital print with UV varnish coating on canvas; synthetic polymer paint on canvas
 Two panels: 168.9 x 137.3cm (each)
 Acc. 2006.075a–b
 Purchased 2006. The Queensland Government's Gallery of Modern Art Acquisitions Fund

BLACK, SANDRA
 Australia b.1950
Carved bowl 1984
 Stoneware, wheelthrown white clay carved with art deco designs, unglazed
 7 x 10.5cm (diam.)
 Acc. 2005.118
 Bequest of Grace Davies and Nell Davies through the Queensland Art Gallery Foundation 2005

BLACKMAN, CHARLES
 Australia b.1928
City lights 1952
 Oil on composition board
 74 x 62cm
 Acc. 2005.089
 Purchased 2005 with funds from the Queensland Art Gallery Foundation Blackman Art Appeal

BOONMA, MONTIEN
 Thailand 1953–2000
Handprints and a hand thrasher element 1989
 Straw, wood, white cement, string/rope and synthetic polymer paint
 79 x 79 x 16cm

One component from 'Manual activities: Handprints and straws' 1989
 White cement, straw
 102 x 19 x 12cm

Handprints on cement construction 1990
 Charcoal, ash, cement and paper on wooden pole with metal and nails
 200 x 101.5 x 14cm (overall)

Trio 1991
 Charcoal, earth, pigment, ashes and glue on paper
 Triptych: 100 x 70cm (each sheet)

(Candle painting) 1990
 Wax and charcoal on scorched paper
 57 x 75.5cm

Study for 'Oblique floor' 1992
 Charcoal, oil stick and ink on paper
 74 x 94cm

From 'Symbiose d'elements naturels et de structures creux dans l'imaginaire d'aujourd'hui' (Symbiosis of natural elements and hollow structures in today's imaginary realm) series:
(Study for sculpture) 1986
 Synthetic polymer paint and pencil on paper adhered to card
 64.5 x 49.5cm (sight)

(Untitled) 1986
 Watercolour, silver paint, graphite on paper adhered to card
 50 x 64.5cm

(Untitled) 1986
 65 x 50cm

Sans title (no title) 1989
 Lacquer on paper
 76.5 x 56cm

Study for 'In between' 1994
 Graphite on paper
 56 x 76.5cm

Reincarnation – Amazonas project 1992
 Charcoal, oil stick, ink on paper
 50 x 70cm (sight)

Sketch for 'A hanging breast' 1992
 Charcoal, graphite and synthetic polymer paint on paper
 50 x 69.5cm

Sketch for 'Scenes' 1992
 Charcoal, graphite and ink on paper
 50 x 70cm

Sketch for 'Scenes' 1992
 Charcoal, graphite, foil and ink on paper
 50 x 70cm

Sketch for Sala of mind 1994
 Charcoal, oil stick, chalk on paper
 74 x 105cm (sight)
 Acc. 2005.291–306
 Gift of Peera Ditbunjong through the Queensland Art Gallery Foundation 2005

BROWNE, COLIN
 Australia b.1949
Ovoid pot c.1980s
 Stoneware, wheelthrown ovoid form, altered and with tenmoku glaze
 34.5 x 21.5cm (diam.)
 Acc. 2005.119
 Bequest of Grace Davies and Nell Davies through the Queensland Art Gallery Foundation 2005

BURRUWAL, BOB
 Australia b.1952
 (Rembarrnga people)
Crocodile 2005
 Paperbark (*Melaleuca argentea*), string and wood with natural pigments
 15 x 254 x 60cm
 Acc. 2006.027
 Purchased 2005

Namorrododo spirit 2005
 Wrapped bark fibre with natural pigments
 212 x 16 x 4cm
Namorrododo spirit 2005
 229 x 16 x 5.5cm
Namorrododo spirit 2005
 204 x 13 x 3.4cm
 Acc. 2006.101–103
 Purchased 2006. Queensland Art Gallery Foundation

BUSTARD, WILLIAM
 England/Australia 1894–1973
(Brisbane River, Indooroopilly) c.1940s
 Oil on board
 39 x 49cm

(Brisbane River, view to Graceville church) c.1940s
 39 x 49cm
 Acc. 2006.019–020
 Purchased 2005

CATTAPAN, JON
 Australia b.1956
Passage set 2004
 Oil on linen
 Four panels: 145 x 575cm (overall)
 Acc. 2005.090a–d
 Purchased 2005 with funds from the Estate of Lawrence F King in memory of the late Mr and Mrs SW King through the Queensland Art Gallery Foundation

CHASELING, SCOTT
 Australia b.1962
Home comforts 2004
 Fused glass, painted and blown
 55.5 x 24.2cm (diam.)

Now or? 2006
 Fused glass, painted and blown
 49 x 24cm (diam.)
 Acc. 2006.063–064
 Purchased 2006. Queensland Art Gallery Foundation Grant

CITIZEN, JOHN
 Australia b.1955
Interior (Modern art) 11 Nov. 2004 2005
 Synthetic polymer paint on canvas
 Two panels: 152 x 152cm (each)
 Acc. 2005.091a–b
 Purchased 2005

COOK, TIMOTHY
 Australia b.1958
 (Tiwi people)
Jilamara, Milikapiti, Melville Island 2003
 Natural pigments on canvas
 90 x 80cm
Kulama 2003
 150 x 60cm
Kulama 2005
 90 x 90cm
 Acc. 2005.262–265
 The Xstrata Coal Indigenous Art Collection. Purchased 2005 with funds from Xstrata Coal through the Queensland Art Gallery Foundation

COOK, TIMOTHY (artist)
 Australia b.1958
 (Tiwi people)
TIPILOURA, IMMACULATA (tunga maker)
 Australia b.1959
 (Tiwi people)
Tunga (bark basket) 2005
 Natural pigments on bark (*Eucalyptus tetradonta*)
 74 x 85 x 47cm
 Acc. 2005.332
 Commissioned 2005 with funds from The Thomas Foundation through the Queensland Art Gallery Foundation

COOPER, JUSTINE
 Australia/United States b.1968
 From 'Saved by science' series:
Blue triangle butterflies (Graphium sarpedon) 2005
Accession books 2005
African lion (Panthera leo) 2005
Albertosaurus dinosaur head 2005
Herpetology collections 2005
Leopards (Panthera pardus), Congo 1911 2005
Cleared and stained tree agama and caiman 2005
The bustroom 2005
Trophies 2005
Yellow honeyeaters (Lichenostomus flavus) 2005
 Digital colour prints on Fuji Crystal Archive Matte paper, ed. of 8
 Five sheets: 99.1 x 76.3cm; five sheets 76.3 x 99.1cm (each comp., approx.)

S.O.S. (Sounds of science) 2005
 Digital Betacam and DVD formats:
 4:55 minutes, colour, sound, ed. 2/10
 Acc. 2005.233–243
 Purchased 2005

COTTON, OLIVE
 Australia 1911–2003
Windflowers c.1939
 Gelatin silver photograph, ed. of 1
 48.9 x 38.8cm (comp.)
 Acc. 2006.062
 Purchased 2006 with funds from the Estate of Ouida Marsten through the Queensland Art Gallery Foundation

DALGARNO, ROY
 Australia 1910–2001
(Tree-felling with tractor) 1940
 Oil on plywood
 45 x 34cm (sight)
 Acc. 2006.026
 Gift of Carolyn Brennan through the Queensland Art Gallery Foundation 2006

DALY, GREG
 Australia b.1954
Vase 1989
 Stoneware, wheelthrown with deep cobalt glaze and red details with gold foil
 28.2 x 28cm (diam.)
 Acc. 2005.120
 Bequest of Grace Davies and Nell Davies through the Queensland Art Gallery Foundation 2005

DANKO, ALEKS
 Australia b.1950
Block bag 1971
 Paint, aluminium, leather on wood, second series, ed. 6/7
 14 x 30.5 x 10.5cm
 Acc. 2005.275
 Gift of an anonymous donor in memory of Garry Anderson through the Queensland Art Gallery Foundation 2005

DAWES, DEBRA
 Australia b.1955
clock wise December 2003 2003
 Oil on canvas
 180 x 260cm
 Acc. 2005.092
 Purchased 2005 with funds from the Estate of Sally Welch Edwards through the Queensland Art Gallery Foundation

DE MEDICI, EX
 Australia b.1959
The theory of everything 2005
 Watercolour and metallic pigment on Arches paper
 114.3 x 176.3cm
 Acc. 2005.244

New Holland goshawk (Astur novae-hollandiae) c.1875
 37 x 27cm (comp.)

Meme for a slave who dreams like an aristocrat [U235 Dreaming]: A frenzy of profit taking 2005
 Graphite on paper
 106 x 114cm
 Acc. 2005.329
 Purchased 2005

DERMER, JOHN
 Australia b.1949
Vase c.1980–82
 Stoneware, wheelthrown with incised lines dividing top section into four segments, salt glaze
 31.5 x 24.5cm (diam.)
 Acc. 2005.121
 Bequest of Grace Davies and Nell Davies through the Queensland Art Gallery Foundation 2005

DIGGLES, SILVESTER
 England/Australia 1817–80
Australian roller (Eurystomus australis) c.1875
 Lithograph, hand-coloured
 37.5 x 27cm (comp.)

Australian shoveller (Spatula rhynchotis) c.1875
 27 x 37cm (comp.)

Mound-raising megapode (Megapodius tumulus) c.1875
 28 x 36.5cm (comp.)

Black-breasted buzzard (Buteo melanostemon) c.1875
 37 x 27cm (comp.)

Black falcon (Falco subniger) c.1870
 36.8 x 26cm (comp.)

Rose-breasted cockatoo (Cacatua eos) c.1875
 36.5 x 26.5cm (comp.)

Leadbeater's cockatoo (Cacatua leadbeateri) c.1875
 36.5 x 26.5cm (comp.)

Black-eared cuckoo (Chrysococcyx osculans), Shiny cuckoo (Chrysococcyx lucidus), and Narrow-billed cuckoo (Chrysococcyx basalis) c.1875
 37.5 x 27cm (comp.)

Wood swallow (Artamus sordidus), White-eyebrowed wood swallow (Artamus superciliosus) and White-rumped wood swallow (Artamus leucopygialis) c.1875
 37.5 x 27.5cm (comp.)

Jardine's harrier (Circus jardinii) c.1875
 36.8 x 26cm (comp.)

New Holland goshawk (Astur novae-hollandiae) c.1875
 37 x 27cm (comp.)

White ibis (Threskiornis strictipennis) c.1875
 37 x 27cm (comp.)

Crested oreoica (Oreoica cristate) and Spangled drongo shrike (Dicrurus bracteatus) c.1875
 37.5 x 28.5cm (comp.)

Spine-tailed swift (Acanthylis caudacuta) and Australian swift (Cypselus australis) c.1875
 38 x 27cm (comp.)

Red-backed kingfisher (Halcyon pyrrhopygia) and Sordid kingfisher (Halcyon sordidus) c.1875
 37.5 x 27.5cm (comp.)

Blue-faced honeyeater (Entomyza cyanotis) and White-pinioned honeyeater (Entomyza albipennis) c.1875
 37 x 27cm (comp.)

DIGGLES, SILVESTER (artist)
 England/Australia 1817–80
EATON, HENRY GREEN (lithographer)
 Australia c.1811–87
Blood-stained cockatoo (Cacatua sanguinea) c.1875
 36.5 x 26.5cm (comp.)

Musk duck (Biziura lobata) c.1875
 37.5 x 27cm (comp.)
 Acc. 2005.310–327
 Purchased 2005

DJUNGINY, ROBYN
 Australia b.1947
 (Ganabingu people)
Woven bottle 2005
 Twined pandanus with natural dyes
 64 x 37.5cm (diam.) (complete)

Woven bottle 2005
 55 x 26cm (diam.) (complete)
 Acc. 2006.107–108
 Purchased 2005. Queensland Art Gallery Foundation

DUPAIN, MAX
 Australia 1911–92
Little nude 1938
 Gelatin silver photograph
 32.6 x 25.4cm (comp.)
 Acc. 2005.217
 Purchased 2005

DURRNG, MICKY
 Australia 1940–2006
 (Liyagalawumirr people)
Gariyak body painting 2006
 Natural pigments on bark
 135 x 35cm

Lorkon (burial pole) 2006
 Wood with natural pigments
 210 x 25cm (diam.) (irreg.)

Lorkon (burial pole) 2006
297 x 21cm (diam.) (irreg.)
Acc. 2006.091–093
Purchased 2006

ELIASSEN, OLAFUR
Denmark b.1967
The cubic structural evolution project 2004
Plastic Lego blocks
Installed size variable
Acc. 2005.109a–
Purchased 2005. Queensland Art Gallery Foundation Grant

ENTATA, IRENE (potter)
Australia b.1946
Arremite (Aranda)/Luritja people)
HERMANSBURG POTTERS (pottery workshop)
Australia est. 1990
Pot: Mission days 2005
Earthenware, hand-built terracotta clay with underglaze colours and applied decoration
41.5 x 30cm (diam.) (complete)
Acc. 2006.028a–b
Purchased 2005

EVANS, EMILY
Australia b.1975
(Lardil people)
Wurruku (Sharp-nosed brown shark) 2005
Synthetic polymer paint on canvas
137 x 91cm
Acc. 2005.258
Purchased 2005

Balibal country 2006
Synthetic polymer paint on linen
172 x 172cm (diagonally)
Acc. 2006.072
The Xstrata Coal Indigenous Art Collection. Purchased 2006 with funds from Xstrata Coal through the Queensland Art Gallery Foundation

FOSTER, ROBERT
Australia b.1962
Blue strike teapot 2004
Stainless steel, anodized aluminium, plastic
24.1 x 21.3 x 14.2cm

Fink water jug designed 1993, produced 2006
Anodized aluminium (silver satin finish) with powder-coated aluminium handle
30.6 x 18.6 x 10.2cm

Fink water jug designed 1993, produced 2006
Anodized aluminium (orange) with powder-coated aluminium handle
30 x 18.4 x 10.4cm

Fink water jug designed 1993, produced 2006
Anodized aluminium (deep blue) with powder-coated aluminium handle
30.1 x 18.4 x 10.4cm
Acc. 2006.085–088
Purchased 2006

FRIEND, DONALD
Australia 1915–89
Sigiriya Rock, Ceylon c.1960
Watercolour and pen, brush and coloured inks with ink wash, heightened with white, with scraping out and crayon
35.3 x 51.2cm (comp.)
Acc. 2005.254
Purchased 2005

GIBBS, CG
Australia 1906–92
Brisbane outskirts 1959
Watercolour
36 x 44.5cm (sight)
Acc. 2005.113
Bequest of Grace Davies and Nell Davies through the Queensland Art Gallery Foundation 2005

GIMBLETT, MAX
New Zealand/United States b.1935
Light green/red – to Dora 1978
Oil and wax on canvas
203.2 x 203.2cm
Acc. 2006.076
Purchased 2006. The Queensland Government’s Gallery of Modern Art Acquisitions Fund

GOIRIS, GEERT
Belgium b.1971
E313 1999
Lambda print, ed. of 5
100.4 x 128cm (comp.)
Acc. 2006.059
Purchased 2006. Queensland Art Gallery Foundation

HALL, FIONA
Australia b.1953
From ‘The Divine Comedy’ series:
Purgatory, Canto XVI: The wrathful 1988
Polaroid photograph
53.2 x 61.4cm (comp.)

Paradise, Canto XXI: The sphere of Saturn 1988
61.6 x 53cm (comp.)

The social fabric 1996
Type C photograph
230 x 130cm
Acc. 2005.229–231
Purchased 2005

HAMADA, ATSUYA
Japan 1932–86
Teapot c.1973
Stoneware with green glaze
9 x 14.5cm (diam.) (irreg., complete)
Acc. 2006.037a–b
Gift of Barbara and Peter Grant through the Queensland Art Gallery Foundation 2006

HAMADA, SHOJI
Japan 1894–1978
Rectangular bottle c.1973
Stoneware, press-moulded with tenmoku glaze and nuka glaze
22 x 16 x 8.5cm

Square platter c.1973
Stoneware with tenmoku glaze, and ladle-poured scroll design in kaki glaze
6 x 27 x 27cm

Round platter c.1973
Stoneware with ash glaze and kaki glaze, and wax resist design of a rice husk
5 x 27.5cm (diam.)

Lidded jar 1965
Stoneware with green–grey glazes and painted fruit design
11.5 x 9cm (diam.) (complete)
Acc. 2006.033–036
Gift of Barbara and Peter Grant through the Queensland Art Gallery Foundation 2006

HANSSEN PIGOTT, GWYN
Australia b.1935
Drift 2005
Wheelthrown and slip-cast
Limoges and Southern Ice porcelains with glazes
19 pieces: 30 x 150 x 23cm (installed)
Acc. 2005.093a–s
Purchased 2005. The Queensland Government’s Gallery of Modern Art Acquisitions Fund

HEARMAN, LOUISE
Australia b.1963
Untitled #1111 2005
Oil on composition board
61.4 x 92.1cm

Untitled #1084 2004
54.5 x 61cm

Untitled #1086 2005
41 x 61cm

Untitled #1109 2004
51.1 x 54cm
Acc. 2006.001–004
Purchased 2006. Queensland Art Gallery Foundation

HEATH, BARBARA
Australia b.1954
Mashrabia-inspired lattice brooch 1993–94
18 carat yellow gold, pearls
2.7 x 2.7 x 0.9cm

Mashrabia-inspired lattice brooch 1993–94
18 carat yellow gold, sterling silver
3.6 (diam.) x 1.3cm

Hawk 1999
18 carat yellow gold, cabochon black star sapphire, yellow sapphire
4 x 3.3 x 1cm

Skylark 2005
Oxidised sterling silver, white seed pearls, ruby
3.2 x 4 x 0.5cm

Wryneck 1999
18 carat yellow gold, diamond, spinel briolette
2.7 x 3.9 x 1.2cm
Acc. 2006.005–009
Purchased 2006 with funds from the Estate of Jessica Ellis through the Queensland Art Gallery Foundation

HEYSEN, HANS
Germany/Australia 1877–1968
(Pastoral scene) c.1920
Watercolour with gouache over pencil
31 x 37.7cm (sight)
Acc. 2006.079
Gift of May Heck in memory of her husband Douglas Heck through the Queensland Art Gallery Foundation 2006

HONG HAO
China b.1965
Long March in Panjiayuan A 2004
Type C photograph, ed. 1/9
127 x 230cm

Long March in Panjiayuan B 2004
Acc. 2006.131–132
Purchased 2006

HU YANG
China b.1959
Shanghai living (series) 2004–05
Type C photographs, ed. 5/8
100 sheets: 43 x 61cm (each comp., approx.)
Acc. 2006.074.001–100
Purchased 2006. The Queensland Government’s Gallery of Modern Art Acquisitions Fund

HUGHAN, HAROLD
Australia 1893–1987
Jug 1950s
Stoneware, wheelthrown with grey glaze
24 x 18 x 15.5cm
Acc. 2006.018
Purchased 2005

HUNTLEY, attrib. to **ALBERT STAFFORD**
Australia 19th century
Engineer’s camp, North Toolburra, near Warwick 1864
Pencil
16 x 21.5cm (oval)
Acc. 2006.025
Purchased 2006. Queensland Art Gallery Foundation Grant

INO, KIYOSHI
Japan b.1946
Vase c.1980–82
Stoneware, wheelthrown with white crackle glaze
23.5 x 14cm (diam.)
Acc. 2005.248
Bequest of Grace Davies and Nell Davies through the Queensland Art Gallery Foundation 2005

INOUE, SHUNICHI
Japan b.1946
Vase 1978
Stoneware, wheelthrown, mallet shape with matte, pale mauve/pink glaze
22.8 x 11cm (diam.)
Acc. 2005.249
Bequest of Grace Davies and Nell Davies through the Queensland Art Gallery Foundation 2005

JACIR, EMILY
Palestine/United States b.1970
Where we come from (If I could do anything for you, anywhere in Palestine, what would it be?) 2001–03
Laser print, ed. 3/3
22.2 x 28.6 x 2.5cm (framed)

Where we come from (Osama) 2001–03
Laser print; c-print mounted on cintra, ed. 3/3
Laser print: 22.2 x 28.6 x 2.5cm (framed); c-print: 37.9 x 24.1 x 2.5cm

Where we come from (Habib) 2001–03
Laser print; c-print mounted on cintra, ed. 3/3
Laser print: 22.2 x 28.6 x 2.5cm (framed); c-print: 30.5 x 22.9 x 2cm

Where we come from (Ibrahim) 2001–03
Laser print, ed. 3/3
22.2 x 28.6 x 2.5cm (framed)
Acc. 2006.115–118
Purchased 2006

JACOBSEN, ARNE (designer)
Denmark 1902–71
STELTON (manufacturer)
Denmark est. 1960
Tea strainer (from ‘Cylinda Line’ series) designed 1964–67, produced 1967
Polished and brushed stainless steel
Two parts: 4 x 10.3cm (complete)
Acc. 2005.216a–b
Purchased 1982

JAPAN
Lidded box 1897–1907 (Meiji period)
(Tiwi people)
Kayimwagakimi jilamara 2004
Natural pigments on canvas
200 x 60cm
Kayimwagakimi jilamara 2004
Jilamara, Milikapiti, Melville Island 2004
Pwoja (Pukumani body paint design) 2004
Acc. 2005.266–269
The Xstrata Coal Indigenous Art Collection. Purchased 2005 with funds from Xstrata Coal through the Queensland Art Gallery Foundation

JIN-GUBARANGUNYJA, LORNA
Australia b.1952
(Burarra (Martay dialect) people)
Jina-bakara (fish trap) 2005
Twined pandanus palm leaf, bark string, wood
147 x 44cm (diam.)
Acc. 2006.106
Purchased 2006. Queensland Art Gallery Foundation

JOHNSON, TIM (artist)
Australia b.1947
SMITH, BRENDAN (collaborating artist)
Australia b.1964
Two phoenix 2005
Synthetic polymer paint on canvas
153 x 183cm
Acc. 2006.010
Purchased 2006 with funds from Macquarie Bank Foundation through and with the assistance of the Queensland Art Gallery Foundation

JONES, JONATHAN
Australia b.1978
(Kamilaroi/Wiradjuri people)
lumination fall wall weave 2004/2006
Electrical cable, light fittings, bulbs on painted MDF board
363 x 720 x 25cm (installed, variable)
The Xstrata Coal Emerging Indigenous Art Award 2006 (winning entry). Purchased 2006 with funds from Xstrata Coal through the Queensland Art Gallery Foundation

lumination fall 1F, 2F, 3F 2003–05
Cotton thread on paper, ed. 5/5
Three sheets: 22 x 15cm (sight, each)
Acc. 2006.070–071
The Xstrata Coal Indigenous Art Collection. Purchased 2006 with funds from Xstrata Coal through the Queensland Art Gallery Foundation

KERINAUIA, RAELENE
Australia b.1962
(Tiwi people)
Kayimwagakimi jilamara 2004
Natural pigments on canvas
200 x 60cm
Kayimwagakimi jilamara 2004
Jilamara, Milikapiti, Melville Island 2004
Pwoja (Pukumani body paint design) 2004
Acc. 2005.266–269
The Xstrata Coal Indigenous Art Collection. Purchased 2005 with funds from Xstrata Coal through the Queensland Art Gallery Foundation

KOOLMATRIE, YVONNE
Australia b.1944
(Ngarrindjeri people)
Hot-air balloon 2006
Coil-woven sedge grass and river rushes
194 x 90cm (diam.)
Acc. 2006.109
Purchased 2006 with funds from Dr Cathryn J Mittelheuser, AM, through the Queensland Art Gallery Foundation

KUDRUVI, SERUWAIA
Lau Islands/Fiji b.(c.)1950
Ibe vakabati (mat) 2005
Woven voi voi (pandanus) with commercial wool
181.5 x 246.3cm
Acc. 2006.113
Commissioned 2005

KUGDJA, KOROLI
West Papua
Noken c.2005
Ilam or metel bark fibre string, karang kwe and dome (brown and yellow orchid) stem, nylon, seed pods and cowrie shells
53.5 x 31.5cm (including handle)
Acc. 2006.055
Purchased 2006

LAHEY, VIDA
Australia 1882–1968
The carter’s rest, Eagle Street 1913
Watercolour
33 x 42cm
Acc. 2006.024
Purchased 2005

LARAIJDBI, LULU
Australia b.1949
(Kuninjku people)
Headdress 2004
Bark fibre string with natural pigments, beeswax, feathers
80 x 28 x 6cm
Acc. 2006.105
Purchased 2006. Queensland Art Gallery Foundation

LAU ISLANDS
Ibe vakabati (mat) c.2001
Woven voi voi (pandanus) with commercial wool
185.5 x 210.5cm
Acc. 2006.111
Purchased 2005

LÊ, DINH Q
Vietnam b.1968
Lotusland 1999
Fibreglass, polymer, wood and synthetic polymer paint, ed. of 1
27 pieces ranging from 30 x 57.5 x 52.5cm to 77.5 x 55 x 45cm
Acc. 2006.073a–aa
Purchased 2006. The Queensland Government’s Gallery of Modern Art Acquisitions Fund

LISTER, W LISTER
Australia 1859–1943
(Riverine landscape) c.1920s
Watercolour
59 x 92.8cm (sight)
Acc. 2005.114
Bequest of Grace Davies and Nell Davies through the Queensland Art Gallery Foundation 2005

LIU JIEQIONG
China b.1967
Story of the Red Army 2004
Papercut, ed. of 6
12 pieces: 225 x 432cm (overall)
Acc. 2006.133a–l
Purchased 2006

LOUGHLIN, JESSICA
Australia b.1975
Untitled 1 2003
Kiln-formed and cut glass
2.1 x 49.5cm (diam.)
Acc. 2006.065
Purchased 2006 with funds from the Estate of Jessica Ellis through the Queensland Art Gallery Foundation

Space between #6 2005
Kiln-formed, wheel-worked glass
40.5 x 49.1 x 5.2cm
Acc. 2006.089
Purchased 2006. Queensland Art Gallery Foundation

MARA, FINAU
Lau Islands/Fiji b.1950
I yara yara (Baby mat) 2005–06
Woven voi voi (pandanus) with beach hibiscus and commercial wool
100 x 140cm
Acc. 2006.114
Commissioned 2005

MARAWILI, DJAMBAWA
Australia b.1953
(Madarrpa people)
Baraltja 2005
Natural pigments on bark
196.5 x 74.5cm

Mundukul (lightning serpent) 2005
200 x 79.5cm

Dhanbarr (hollow log memorial pole) 2004
Wood with natural pigments
312 x 20cm (diam.)
Acc. 2005.271–273
Purchased 2005. Queensland Art Gallery Foundation

MARRINON, LINDA
Australia b.1959
Dancer 2005
Tinted plaster
67.2 x 23.6 x 17.3cm

Man in long johns 2005
Plaster
67.6 x 23.7 x 19.1cm

Man with shorts 2005
Patinated plaster
61.2 x 17.1 x 20.6cm

Pink sailor 2005
Tinted plaster
65 x 24.6 x 17.4cm
Acc. 2006.066–069
Purchased 2006. Queensland Art Gallery Foundation Grant

MCCONNELL, CARL
Australia 1926–2003
Large bowl with ‘Pinjarra plum’ glaze c.1976
Stoneware, wheelthrown with circular design of incised leaves and ‘Pinjarra plum’ (reduced iron) glaze
13 x 43cm (diam.)

Celadon plate c.1978–80
Stoneware, wheelthrown with incised circular design of leaves and pale celadon glaze
4 x 22.8cm (diam.)

Bowl with cracked glaze c.1978–80
Porcelain, wheelthrown with crackled grey–white glaze, with wooden stand
Bowl: 7.5 x 14cm (diam.); stand: 3 x 9cm (diam.)
Acc. 2005.122–124
Bequest of Grace Davies and Nell Davies through the Queensland Art Gallery Foundation 2005

Large vase with ‘Pinjarra plum’ glaze c.1980
Stoneware, wheelthrown with ‘Pinjarra plum’ glaze and poured decoration
54 x 29.5cm (diam.)
Acc. 2005.253
Purchased 2005

Tea bowl with crab motif c.1970s
Porcelain, wheelthrown with brushed cobalt decoration and crackled celadon glaze, with wooden stand
Bowl: 8.5 x 9.8cm (diam.); stand: 4 x 10cm (diam.)
Acc. 2006.080a–b
Gift of Bunny McConnell through the Queensland Art Gallery Foundation 2006

MCMMASTER, VAL
Australia 1913–83
Coffee set 1936
Earthenware, slab-built white clay of swelling rectangular shape, carved with a register of leaves and flowers, glazed brown and colours
Coffee pot: 21 x 19 x 9cm (complete); milk jug: 10.4 x 14.5 x 8.3cm; sugar basin: 14 x 16 x 9.5cm (complete)
Acc. 2006.081.001–003
Gift of Mrs Mavis McIntyre through the Queensland Art Gallery Foundation 2006

MIK, AERNOUT
The Netherlands b.1962
Pulverous 2003
3-channel video installation on video server: 23:27 minutes (looped), colour, silent on rear projection screen embedded into temporary wall, ed. 1/4
200 x 790cm (installed, approx.)
Acc. 2005.110
Purchased 2005. The Queensland Government’s Gallery of Modern Art Acquisitions Fund

MILLER, MOLLY
Australia
(Pitjantjatjara people)
Basket 1997
Coil-woven desert grass (wangarnu or minarri), emu feathers with wool and red ininti beans
28 x 48cm (diam.)
Acc. 2005.232
Purchased 2005

MOFFATT, TRACEY
Australia/United States b.1960
Adventure series 2004
Digital photo-prints on Fujiflex paper, ed. 12/25
Ten sheets: 132.1 x 114.8cm (each comp.)
Acc. 2005.203.001–010
Purchased 2005. The Queensland Government’s Gallery of Modern Art Acquisitions Fund

MOLVIG, JON
Australia 1923–70
Sketch for ‘Portrait version no. 3’ 1960
Charcoal on Ingres paper
56 x 37.5cm (sight)
Acc. 2005.115
Bequest of Grace Davies and Nell Davies through the Queensland Art Gallery Foundation 2005

MURDILINGA, MARINA
Australia b.1960
(Kuninjku people)
Yawkyawk spirit 2005
Pandanus, cane, bark fibre, natural dyes
231 x 86 x 6cm

Yawkhawk spirit 2005
183.5 x 62.5 x 6cm
Acc. 2006.097–098
Purchased 2006. Queensland Art Gallery Foundation

MURIATA, ABE
Australia b.1952
(Girramay people)
Jawun (basket) 2005
Twined lawyer vine
44 x 29 x 21cm
Acc. 2006.030
Purchased 2005

MURRAY, NINNEY
Australia b.1941
(Girramay/Jirrbal people)
Wungarr (eel trap) 2005
Twined lawyer vine
149 x 21.5 x 13cm
Acc. 2006.031
Purchased 2005

NAPALTJARRI, NGOIA POLLARD
Australia b. late 1940s
(Luritja/Warlpiri people)
Swamps around Nyirripi 2005
Synthetic polymer paint on linen
191 x 155cm
Acc. 2005.257
Purchased 2005

NAPALTJARRI, WENTJA 2
Australia b.(c.)1940
(Luritja/Pintupi people)
Rock holes west of Kintore 2005
Synthetic polymer paint on linen
152 x 188cm
Acc. 2005.256
Purchased 2005

NOLAN, SIDNEY
Australia/England 1917–92
Flower 1948
Carbon transfer drawing
29.3 x 22.9cm (comp.)

Wallaby and flowers c.1949
29.3 x 22.9cm (comp.)

Flower 1949
30.5 x 25.4cm (comp.)
Acc. 2006.021–023
Purchased 2005

NONA, DENNIS
Australia b.1973
(Kala Lagaw Ya people)
Baidam 2006
Linocut, A.P.
95 x 239cm (comp.)

Ara 2006
90 x 240cm (comp.)
Acc. 2006.011–012
Purchased 2006. Queensland Art Gallery Foundation Grant

NORRIE, MARY
Australia 1917–2005
Red square 1967
Synthetic polymer paint on board
56 x 76cm

Green abstract c.1972
92 x 106.5cm

Mt Coot-tha wall no. 2 c.1980
Synthetic polymer paint on canvas
43 x 83.5cm
Acc. 2006.082–084
Gift of Angus Norrie through the Queensland Art Gallery Foundation 2006

OZAWA, TSUYOSHI
Japan b.1965
From ‘Vegetable weapon’ series:
Salmon hotpot/Tokyo 2002
Type C photograph, ed. of 1
157 x 114cm (comp.)

Korean style vegetable hotpot/Seoul 2001
157.2 x 114cm (comp.)

Chapsui/Baguio, The Philippines 2001
157.1 x 114.1cm (comp.)

Seafood hotpot/Beijing 2002
157 x 114.1cm (comp.)

Parippu (Lentil curry) from Sri Lanka/New York 2002
114 x 157cm (comp.)

Giblets hotpot/Fukuoka 2002
114.2 x 157cm (comp.)
Acc. 2005.095–100
Purchased 2005 with funds from John Potter and Roz MacAllan through the Queensland Art Gallery Foundation

Vegetable vindaloo/Brisbane, Australia 2005
156 x 113cm (comp.)

Vegetable curry/Brisbane, Australia 2005
113 x 156cm (comp.)

Chicken and spinach risotto/Brisbane, Australia 2005
113 x 156cm (comp.)
Acc. 2005.342–344
Purchased 2005 with funds from John Potter and Roz MacAllan through the Queensland Art Gallery Foundation and the Queensland Art Gallery Foundation Grant

PRESTON, MARGARET
Australia 1875–1963
Protea 1925
Woodcut, hand-coloured
26.5 x 24.3cm
Acc. 2006.121
Purchased 2006. Queensland Art Gallery Foundation

PRESTON, REG
Australia 1917–2000
Spherical jar c.1980s
Stoneware, wheelthrown with light blue glaze over tenmoku glaze
19.7 x 21cm (diam.) (complete)

Spherical vase c.1980s
Stoneware, wheelthrown with mottled tenmoku and brown glazes
29.5 x 21cm (diam.)

Large vase c.1980s
Stoneware, wheelthrown and distorted with square shoulders and brown glaze over wax resist
47.5 x 18.5 x 18.5cm
Acc. 2005.125–127
Bequest of Grace Davies and Nell Davies through the Queensland Art Gallery Foundation 2005

PUUPIA, CHATCHAI
Thailand b.1964
Go ahead, jump c.1994
Synthetic polymer paint and crayon on canvas
201 x 135cm
Acc. 2005.307
Gift of Peera Ditbunjong through the Queensland Art Gallery Foundation 2005

PUIPIA, CHATCHAI
Thailand b.1964
Go ahead, jump c.1994
Synthetic polymer paint and crayon on canvas
201 x 135cm
Acc. 2005.307
Gift of Peera Ditbunjong through the Queensland Art Gallery Foundation 2005

PULE, JOHN
Niue/New Zealand b.1962
Tukulagi tukumuitea (Forever and ever) 2005
Oil on canvas
Triptych: 199.9 x 199.9cm (each panel)

Lagaki (To lift) (series) 2000–05
Ink, oil stick, pencil and pastel on paper
15 sheets: 76.3 x 56.4cm (each comp., approx.)
Purchased 2005. The Queensland Government’s Gallery of Modern Art Acquisitions Fund

Halahala (The pathway is clear for the child to be born) 1992
Oil on canvas
247 x 176.5cm (unstretched)

Untitled 1998
246.4 x 225.7cm (unstretched)

Vaka (canoe) 1994
Woodcut, ed. 6/18
92.9 x 21cm (comp.)

Mamao 1995
Woodcut, ed. 7/14
40.6 x 39.1cm (comp.)

Ihi ihi (divide) 1997
Lithograph, ed. 2/32
58 x 47.9cm (comp.)

Self portrait 1999
Etching, A.P.
18.9 x 10.4cm (comp.)

Dazzled eyes 2001
Lithograph, ed. 6/38
17.9 x 13cm (comp.)

Paradise lost 2001
Lithograph, ed. 5/30
71.1 x 56.8cm (comp.)

Agaaga 2002
Etching (left-hand image) and woodcut (right-hand image), ed. 5/30
29.7 x 50.2cm (comp.)

Mahina 2004
Lithograph, ed. 8/40
76.4 x 61.1cm (comp.)
Acc. 2005.204–215
Gift of the artist 2005

PUTRIH, TOBIAS
Slovenia b.1972
Macula A/-5 2005
Cardboard
Five parts: 240 x 119.4 x 121.9cm (complete)
Acc. 2006.077a–e
Purchased 2006. The Queensland Government’s Gallery of Modern Art Acquisitions Fund

PWERLE, ANGELINA
Australia b.(c.)1952
(Anmatyerre/Alyawarre people)
Bush plum dreaming 2002
Synthetic polymer paint on canvas
180 x 119cm
Acc. 2005.094
Purchased 2005 with funds from the Estate of Margaret Hockey, oam, through and with the assistance of the Queensland Art Gallery Foundation

QURESHI, NUSRA LATIF
Pakistan b.1973
Silent spaces 1 2005
Gouache, paper, synthetic polymer paint and wasli on illustration board
Diptych: 40 x 30cm (each comp.)
Acc. 2005.334a–b
Purchased 2005. The Queensland Government’s Gallery of Modern Art Acquisitions Fund

RUFF, THOMAS
Germany b.1958
Substrat 19 1 2003
Chromogenic colour print on paper with Diasec (acrylic sheet), ed. 3/5
183.5 x 108.4cm (comp.)
Acc. 2005.111
Purchased 2005. The Queensland Government’s Gallery of Modern Art Acquisitions Fund

SAMOA
Angel in pink (fala su’i) c.1980–85
Woven laufala (pandanus) and commercial wool
128 x 224cm (irreg., including fringe)
Acc. 2005.345
Purchased 2005

SANDERS, CHRISTOPHER
Australia b.1952
Covered jar c.1995
Stoneware, wheelthrown with ‘sang de boeuf’ (reduced copper) glaze
31.5 x 24.5cm (diam.) (complete)

Flat lid jar 1995
Porcelain, wheelthrown with crackled white glaze
12.5 x 12cm (diam.) (complete)
Acc. 2005.128–129
Bequest of Grace Davies and Nell Davies through the Queensland Art Gallery Foundation 2005

SANPITAK, PINAREE
Thailand b.1961
Untitled c.1995
Gouache, crayon
42 x 29.5cm

Untitled c.1995
Acc. 2005.308–309
Gift of Peera Ditbunjong through the Queensland Art Gallery Foundation 2005

SCHLITZ, MICHAEL
Australia b.1967
Astronomer 2004
Drypoint, ed. 12/40
76.5 x 56.5cm (comp.)
Acc. 2006.090
Acquired 2006. Print Council of Australia Member Print 2004

SELIG, SANDRA
Australia b.1972
Untitled (from ‘Webs from my garden’ series) 2004–05
Enamel on spider web with adhesive and sealant on paper
Eight sheets: 27.7 x 41.8cm (each)
Acc. 2005.218–225
Purchased 2005. Queensland Art Gallery Foundation Grant

SHAHANI, KUMAR
India b.1940
The Bamboo Flute (Birah Bharyo Ghar Aangan Kone) 2000
35mm negative and 35mm film print: 84 minutes, colour, sound (Hindi and Tamil languages, English subtitles)

Immanence (Bhavantarana) 1991
35mm negative and 35mm film print: 65 minutes, colour, sound (Oriya and Sanskrit languages, English subtitles)

Kasba 1990
35mm negative and 35mm film print: 115 minutes, colour, sound (Hindi, Urdu, and Panjabi languages, English subtitles)

The Khayal Saga (Khayal Gatha) 1988
35mm negative and 35mm film print: 103 minutes, colour, sound (Hindi and Urdu languages, English subtitles)
Purchased 2006. The Queensland Government’s Gallery of Modern Art Acquisitions Fund

SHARPE, PENNY
Australia b.1941
(Boats on the Brisbane River) 1959
Watercolour and Indian ink
25 x 25.2cm (sight)
Acc. 2005.116
Bequest of Grace Davies and Nell Davies through the Queensland Art Gallery Foundation 2005

SHERIDAN, STEVE
Australia b.1950
Bowl with chün glaze c.1980–81
Stoneware, wheelthrown with chün glaze
21 x 24.6cm (diam.)

Vase with lug handles c.1980–81
Stoneware, wheelthrown with chün-type glaze
21 x 24.5cm (diam.)
Acc. 2005.130–131
Bequest of Grace Davies and Nell Davies through the Queensland Art Gallery Foundation 2005

SHIGA, SHIGEO
Japan b.1928
Large vase c.1970s
Stoneware, wheelthrown, with cinnabar-red glaze
28.5 x 19cm (diam.)

Vase c.1970s
Stoneware, wheelthrown, with brown glaze and red/brown glaze near base
23.5 x 14cm (diam.)

Vase c.1970
Stoneware, wheelthrown, with purple/blue chün-type glaze
18 x 16cm (diam.)
Acc. 2005.250–252
Bequest of Grace Davies and Nell Davies through the Queensland Art Gallery Foundation 2005

SHOJI, MITSUO
Australia b.1946
Large bowl c.1979
Stoneware, wheelthrown with cream glaze and calligraphic marking
11.5 x 51cm (diam.)
Acc. 2005.132
Bequest of Grace Davies and Nell Davies through the Queensland Art Gallery Foundation 2005

SHORT, DOROTHY
Australia b.1933
(Umpila people)
Grass skirt 2005
Knotted cabbage palm fibre with natural dyes
77 x 94 x 5.2cm
Acc. 2006.029
Purchased 2005

SIGNER, ROMAN
Switzerland b.1938
Ladder with barrel 2001
Metal ladder, barrel, balloon
Ladder: 274.2 x 35.5 x 5.7cm; barrel: 58.5 x 37.5cm (diam.)
Acc. 2005.112a–c
Purchased 2005. The Queensland Government’s special Centenary Fund and the Queensland Art Gallery Foundation

SITTHIKET, VASAN
Thailand b.1957
From ‘Inferno’ series:

Sinners are gunmen who serve the mafia and tyranny, oppressing peaceful men to be afraid, doing unlawful business, making trouble everywhere. They will be surrounded by flocks of hungry dogs and crows gathering to eat them, they will die and be reborn again and again for five hundred kalpas 1991
Synthetic polymer paint on canvas
210 x 210cm

Sinners are eggheads, learn superb knowledge too much; do nothing, only records in their heads; take farangs’ science bullshit to cheat Thais, fighting for high status. Their heads will be broken and their brains taken out, replaced with shit 1991

Sinners are weapon merchants; who profit from suffering and devastation. Their heads will be hanged down in cave of conflagration; hitting each other to death 1991

Sinners are social workers, living off poor people’s torments; making many projects to get money from abroad; soothing for a while, delaying social changes (poverty forever). They will be wriggling on big thorn rocks painfully unto death 1991

Sinners are bullshit law writers, prejudiced, grab advantages for their group only. Their mouths will be opened by claws, putting hot irons inside. Cutting heads

off, vultures and crows tear and eat until death, reborn like this for hundred kalpas 1991

(title in Thai script) 1991
210 x 210cm
(title in Thai script) 1991
(title in Thai script) 1991
(title in Thai script) 1991
190 x 205cm
(title in Thai script) 1991
210 x 210cm

Sketches for ‘Dasachati’ series 1997
Crayon
Four sheets: 56 x 76.5cm (each)

Peera Ditbunjong 1991
Ink
12.5 x 7.5cm
Acc. 2005.276–290
Gift of Peera Ditbunjong through the Queensland Art Gallery Foundation 2005

SMITH, DAVID
Australia b.1927
Oval vase c.1970s
Stoneware, wheelthrown with tenmoku glaze
16 x 10.5cm (diam.)
Acc. 2005.133
Bequest of Grace Davies and Nell Davies through the Queensland Art Gallery Foundation 2005

SPOWERS, ETHEL
Australia 1890–1947
Staircase window c.1925
Woodcut, ed. of 40
14.8 x 8.9cm (comp.)
Acc. 2005.255
Purchased 2005

STEVENS, GRANT
Australia b.1980
Danger zone 2003
DVD: 19.5 seconds (looped), colour, sound, ed. of 5

Some want it all 2004
DVD: 3:03.25 minutes (looped), black and white, sound, A.P.

Nothing’s changed 2004
DVD: 26:58.79 minutes (looped), three channel, black and white, sound, ed. of 7
Acc. 2005.226–228
Purchased 2005. Queensland Art Gallery Foundation Grant

TABUNI, NAMA KULEME
West Papua
Noken 2005
Ilam or metel bark fibre string, karang kwe and dome (brown and yellow orchid) stem, pigs tusks and cowrie shells
72 x 31cm (including handle)
Acc. 2006.044
Purchased 2006

TAMARII, EMMA (artist)
Marquesas Islands/Tahiti b.1937
TAMARII, MARIE-THERESE (collaborating artist)
Marquesas Islands/Tahiti b.1959
Couronne du Roi (The King’s crown) (tifaifai) 2003
Commercial cotton cloth and thread in appliqué and embroidered technique
280 x 240cm
Acc. 2006.061
Purchased 2006. Queensland Art Gallery Foundation

TAPPIN, PETER
Australia b.1941
Vase with flared lip c.1980s
Earthenware, wheelthrown with hand-carved band at the shoulder and green glaze
21.7 x 8.5cm (diam.)
Acc. 2005.134
Bequest of Grace Davies and Nell Davies through the Queensland Art Gallery Foundation 2005

TERAOKA, MASAMI
Japan/United States b.1936
31 Flavors Invading Japan/French Vanilla 1978
65 colour screenprint on Roll Rives paper, ed. 48/58
28 x 140cm (comp.)
Acc. 2005.274
Purchased 2005 with funds from Jan and Spencer Grammer through the Queensland Art Gallery Foundation

Woman with Iris 1980
54 colour screenprint on Arches 88 paper, ed. 36/87
58.3 x 43.3cm (comp.)

McDonald’s Hamburgers Invading Japan/Chochin-me 1982
36 colour screenprint on Arches 88 paper, ed. 41/91
54.3 x 36.5cm (comp.)

Sarah and Octopus/Seventh Heaven 2001
29 colour woodblock on Hoshō paper, ed. 28/200
26.4 x 40cm (comp.)

AIDS Series/Geisha and Ghost Cat 1989/2002
Aquatint and sugar lift etching, with spit bite and direct gravure on Shimane Sekishu 100% kozo paper, ed. 8/35
70 x 50.3cm (comp.)
Acc. 2005.335–338
Purchased 2005. The Queensland Government’s Gallery of Modern Art Acquisitions Fund

Riji (pearlshell pendant): Man/woman story 2006
34.7cm (long); pendant: 17.3 x 13.5 x 2.1cm

THE ATLAS GROUP / WALID RAAD
Lebanon est. 1999 / b.1967
Already been in a lake of fire 1999–2002
Digital colour prints, ed. 3/7
Ten sheets: 29.5 x 41.5cm (sight, each comp.)
Acc. 2006.078a–j
Purchased 2006. The Queensland Government’s Gallery of Modern Art Acquisitions Fund

THENUWARA, CHANDRAGUPTHA
Sri Lanka b.1960
Peace 2004
Synthetic polymer paint on canvas
91.4 x 121.9cm
A line on a canvas 2004
Ink on canvas
Camouflage 2004
Synthetic polymer paint on canvas
Camouflage 2004
Acc. 2006.038–041
Purchased 2006. Queensland Art Gallery Foundation

TIGAN, AUBREY
Australia b.1945
(Bardi/Jawu people)
Riji (pearlshell pendant): Traditional Bardi trading shell 2006
Pearlshell, hair string with natural pigment
55.5cm (long); pendant: 17.5 x 13.8 x 2.1cm

Riji (pearlshell pendant): Traditional Bardi trading shell 2006
39cm (long); pendant: 16.8 x 13 x 1.7cm

Riji (pearlshell pendant): Stingray, coconut tail (Butcher Joe) 2006
83cm (long); pendant: 16.7 x 13.1 x 2cm

Love Riji (pearlshell pendant) 2006
58cm (long); pendant: 18 x 14.5 x 1.7cm

Riji (pearlshell pendant): Galaloong (God Man Design) 2006
84.8cm (long); pendant: 19 x 15.7 x 3cm

Riji (pearlshell pendant): Jawi design 2006
59cm (long); pendant: 19 x 14.3 x 2.2cm

Riji (pearlshell pendant): Man/woman story 2006
34.7cm (long); pendant: 17.3 x 13.5 x 2.1cm

Riji (pearlshell pendant): Bardi design 2006
35.5cm (long); pendant: 16.7 x 13.3 x 1.5cm

Riji (pearlshell pendant): Man/Beast Ilyarrgan/Jawi 2006
71cm (long); pendant: 18 x 14 x 1.8cm
Acc. 2006.122–130
Purchased 2006. Queensland Art Gallery Foundation

TRISTRAM, JW
Australia 1872–1938
(Landscape with rising moon) 1921
Watercolour
17.7 x 36.7cm (sight)
Acc. 2005.117
Bequest of Grace Davies and Nell Davies through the Queensland Art Gallery Foundation 2005

UNGWANAKA, RAHEL (potter)
Australia b.1946
(Arremte (Aranda)/Luritja people)
HERMANNSBURG POTTERS (pottery workshop)
Australia est. 1990
Ankarta (Frill-necked lizard) 2005
Earthenware, hand-built terracotta clay with underglaze colours and applied decoration
39 x 26cm (diam.) (complete)
Acc. 2006.032a–b
Purchased 2006. Queensland Art Gallery Foundation

UNIDENTIFIED ARTIST
Australia
Mewana (sedge grass basket) c.1995
Twined sedge grass, bark fibre string
71.5 x 44cm (diam.) (without handle)

Mewana (sedge grass basket) c.1995
58.5 x 60.5cm (diam.) (without handle)
Acc. 2006.099–100
Purchased 2006. Queensland Art Gallery Foundation

URALE, SIMA
Samoa/New Zealand b.1969
Still life 2001
35mm film and Digital Betacam formats: 10:59 minutes, colour, stereo, ed. unlimited
The James C Sourris Collection. Purchased 2005 with funds from James C Sourris through the Queensland Art Gallery Foundation

YONGPOOTHORN, SAVANHARY (artist)
Laos/Australia b.1971
YONGPOOTHORN, MUNGSAMAI (collaborating artist)

Laos/Australia b.1941
Tala 2005
Synthetic polymer paint on perforated canvas
Triptych: 120 x 246cm (overall)
Acc. 2005.259a–c
Purchased 2005. Queensland Art Gallery Foundation

WALLACE, ANNE
Australia b.1970
That was long ago 2005
Oil on canvas
91 x 127cm
The James C Sourris Collection. Purchased 2005 with funds from James C Sourris through the Queensland Art Gallery Foundation

Sometimes I wonder 2005
48 x 57cm
Acc. 2005.260–261
Purchased 2005 with funds from the Estate of Margaret Hockey, OAM, through and with the assistance of the Queensland Art Gallery Foundation

WARHOL, ANDY
United States 1928–87
Birmingham race riot 1964
Screenprint, ed. of 510
50.6 x 60.8cm (comp.)
Purchased 2006. The Queensland Government's Gallery of Modern Art Acquisitions Fund

S&H green stamps 1965
Offset lithograph, ed. of 300 approx.
56.8 x 55.7cm (comp.)
Acc. 2006.119–120
Purchased 2006. Queensland Art Gallery Foundation

WASIM, SAIRA
Pakistan b.1975
Drawing "Mission accomplished?" 2005
Gouache, graphite and tea washes on artist board
30.2 x 18.3cm (comp.)

Where we went wrong 2005
Gouache on tea-stained artist board
35.9 x 20.2cm (comp.)

Untitled 2005
Gouache, silver, ink and graphite on artist board
19 x 14.1cm (comp.)
Acc. 2005.339–341
Purchased 2005

Holy matrix 2005
Gouache, silver and ink washes on artist board
23.3 x 33cm (comp.)

Lamentation of innocence (Genocide) 2005
Gouache on artist board
23.2 x 30.5cm (comp.)
Acc. 2006.042–043
Purchased 2006

WENDA, DIWET
West Papua
Noken c.2005
Ilam or metel bark fibre string, karang kwe and dome (brown and yellow orchid) stem, nylon, seed pods and pigs tusks
81.2 x 34cm (including handle)
Acc. 2006.058
Purchased 2006

WENDA, JACO
West Papua
Noken 2005
Ilam or metel bark fibre string, karang kwe and dome (brown and yellow orchid) stem and cowrie shells
68 x 32.2cm (including handle)

Noken 2005
Ilam or metel bark fibre string, karang kwe and dome (brown and yellow orchid) stem
70.1 x 32cm (including handle)
Acc. 2006.053–054
Purchased 2006

WENDA, MUIN
West Papua
Noken c.2005
Nylon and karang kew and dome (brown and yellow orchid) stem
64.6 x 21.7cm (including handle)
Acc. 2006.057
Purchased 2006

WENDA, NURDIN
West Papua
Noken 2005
Ilam or metel bark fibre string, karang kwe and dome (brown and yellow orchid) stem
64.5 x 37.5cm (including handle)

Noken 2005
61.8 x 30.8cm (including handle)

Noken 2005
Ilam or metel bark fibre string, karang kwe and dome (brown and yellow orchid) stem and nylon
68.5 x 34.5cm (including handle)

Noken 2005
Ilam or metel bark fibre string, karang kwe and dome (brown and yellow orchid) stem and cowrie shells
60 x 29.5cm (including handle)

Noken 2005
Ilam or metel bark fibre string, karang kwe and dome (brown and yellow orchid) stem
72.2 x 40.4cm (including handle)

Noken 2005
Ilam or metel bark fibre string, karang kwe and dome (brown and yellow orchid) stem and seed pods
55.3 x 28.9cm (including handle)

Noken 2005
Ilam or metel bark fibre string, karang kwe and dome (brown and yellow orchid) stem
66.4 x 31.9cm (including handle)

Noken 2005
62.4 x 37.6cm (including handle)
Acc. 2006.045–052
Purchased 2006

WENDA, TIRION
West Papua
Noken c.2005
Ilam or metel bark fibre string, karang kwe and dome (brown and yellow orchid) stem and cotton
75.9 x 30.4cm (including handle)
Acc. 2006.056
Purchased 2006

WHERRA, JACK
Australia c.1924–c.1983
(Ngariinyin people)
(Pastoral scene) c.1957
Carved boab nut
21.5 x 10.5cm (diam.)

(Hunting scene) c.1957
Acc. 2006.094–095
Purchased 2006

WONAEAMIRRI, PEDRO
Australia b.1974
(Tiwi people)
Pwoja (Pukumani body paint design) 2005
Natural pigments on canvas
196 x 118cm
Acc. 2005.270
Purchased 2005. Queensland Art Gallery Foundation

Tuitini (pole) 2005
Carved wood with natural pigments
224 x 22cm (diam.)
Acc. 2005.331

Tuitini (pole) 2005
234.5 x 20cm (diam.)
Acc. 2005.333
Commissioned 2005 with funds from The Thomas Foundation through the Queensland Art Gallery Foundation

Tuitini (pole) 2005
218 x 19cm (diam.)
Acc. 2006.110
Commissioned 2005 with assistance from The Thomas Foundation through the Queensland Art Gallery Foundation

WRIGHT, GP
Australia active c.1874–79
From 'Brisbane illustrated' portfolio c.1874–79:
Cocos Plumosa Palm. The Curator's Cottage, & c., Botanic Gardens Tropical foliage – the island, Botanic Gardens (Weeping willow and bamboo, Botanic Gardens) Government House and domain, from the top of the parliamentary building The General Post Office The fountain and terra cottas, Acclimatisation Society, Bowen Park

The Registrar-General's Office The Lands Office Victoria Bridge, from William Street The river – Petrie's Bight and wharves
Albumen photographs
Ten sheets: 20 x 27cm (each comp., approx.)
Acc. 2005.346–355
Purchased 2005

WRIGHT, JUDITH
Australia b.1945
One dances 2003
Lambda print, ed. 2/6
120 x 120cm (comp.)
One dances 2003
One dances 2003
Acc. 2005.245–247
Gift of the artist through the Queensland Art Gallery Foundation 2005

One dances 2003
Digital Betacam: 15:00 minutes, colour, sound, ed. 3/6
Acc. 2005.330
Purchased 2005

YALI, REPEKA
Lau Islands/Fiji b.1942
Ibe vakabati (mat) 2005
Woven voi voi (pandanus) with commercial wool
178.7 x 272.7cm
Acc. 2006.112
Commissioned 2005

YANG ZHENZHONG
China b.1968
Light and easy 2002
Type C photograph, ed. 8/10
120 x 181.7cm (comp.)

Nos 5, 9, 15–17, 24 from Light and easy series 2002
Type C photographs, ed. 8/10
Six sheets: 120 x 79cm (each comp., approx.)

922 rice corns 2000
Betacam SP and DVD formats: 8:00 minutes, colour, sound, ed. 7/10
Acc. 2005.101–108
Purchased 2005. Queensland Art Gallery Foundation

YARINKURA, LENA
Australia b.1961
(Kune/Rembarrnga people)
Wyarra spirit 2005
Wooden sticks, paperbark, bark fibre, natural pigments
238 x 41.5 x 4.5cm

Dancing belt 2005
Bark fibre string with natural pigments, feathers
55 x 37.5 x 8cm
Acc. 2006.096, 2006.104
Purchased 2006. Queensland Art Gallery Foundation

DEACCESSIONS ASHTON, WILL
Australia 1881–1963
The harbour, Algeciras, Spain 1936
Oil on canvas
54.5 x 65cm
Acc. 1:0703
Purchased 1956

BALE, AME
Australia 1875–1955
Pom-Pom dahlias c.1911
Oil on canvas
50.8 x 38.7cm
Acc. 1:0634
Purchased 1954

CAMPBELL, ROBERT
Australia 1902–72
The Seine and Ile de la Cité c.1930
Oil on canvas
40 x 56cm
Acc. 1983.007
Purchased 1983

CARTER, NORMAN
Australia 1875–1963
A lady in black 1928
Oil on canvas
94 x 78.8cm
Acc. 1:0301
Purchased 1942

CHINA
Pair of pendants 20th century
Green jade, carved and pierced with attached maroon silk tassels
0.5 x 7.6 x 5.8cm (each); 14cm (tassel, long)
Acc. 4:1278a–b

Snuff bottle 19th century
Clear glass cased in multicolours and carved with flowers. Silver mounted base
7.9 x 4.4 x 2.6cm
Acc. 4:1287

Snuff bottle 19th century
Clear glass cased red and carved. Silver base
5.6 x 5 x 2.5cm
Acc. 4:1288

Snuff bottle 19th century
Brown glass cased yellow and carved
5.3 x 4.7 x 1.5cm
Acc. 4:1289

Box for seals, seals and paint box 20th century
Brocade box, silk lined enclosing two soapstone seals and porcelain box of ink
3.2 x 15 x 8cm
Acc. 4:1355

Box 20th century
Red cinnabar lacquer; the top carved with figures in a landscape and the sides with a diaper pattern
5 x 14.5 x 9.5cm (complete)
Acc. 4:1356a–b

Plate on stand 19th century
Silver filigree
2.5 x 16.5cm (diam.)
Acc. 4:1387
Bequest of Dr Ernest Singer 1975

Snuff bottle 19th century
Red glass with carved floral motifs
6.6 x 6 x 2.5cm
Acc. 4:1514

Snuff bottle 19th century
Mottled white glass cased red and carved with stylised frogs
7.9 x 5.1 x 2.2cm
Acc. 4:1515

Snuff bottle 19th century
Clear glass cased red and carved with a design of birds and lotus
7.2 x 5.7 x 2.7cm
Acc. 4:1516

Snuff bottle 19th century
Clear glass, the interior painted in polychrome with leaves and flowers
8.9 x 7.5 x 5cm
Acc. 4:1517
Gift of Mrs M. Ponsford 1979

CHRISTMAS, EW
Australia 1850–1918
Evening near Goulburn c.1898
Oil on canvas
102.2 x 81.9cm
Acc. 1:0074
Purchased 1898

COLQUHOUN, AD
Australia 1894–1983
Portrait of M.S. Herring Esq. 1958
Oil on canvas
91.5 x 76.2cm
Acc. 1:0778
Commissioned 1958

DARGIE, WILLIAM
Australia 1912–2003
Riabouchinska in Cotillon 1940s
Oil on canvas on cardboard
48 x 58.2cm
Acc. 1:0375
Purchased 1946

Portrait of Mr S.H. Ervin c.1950s
Oil on canvas
102.3 x 76.5cm
Acc. 1:1067
Bequest of Mrs Mignon McKelvey in memory of her mother Mrs Muriel Beatrice Ervin 1967

DOBELL, WILLIAM
Australia 1899–1970
Portrait of a cat 1945
Oil on composition board
17.1 x 25.5cm
Acc. 1:0585
Purchased 1953

ELDERSHAW, JOHN
Australia 1892–1973
The millet field 1963–65
Oil on composition board
60.8 x 76.5cm
Acc. 1:1034
Purchased 1965

JACKSON, JAMES R
New Zealand 1882–1975
Autumn day, Sydney Harbour 1949
Oil on canvas on hardboard
53.3 x 96.2cm
Acc. 1:1130
Purchased 1970

JAPAN
Six liqueur goblets 19th century
Silver cast and engraved
5.6 x 3cm (diam.) (each)
Acc. 4:1388.001–006
Bequest of Dr Ernest Singer 1975

JONES, PAUL
Australia 1921–98
Fruit 1949
Oil on composition board
26.3 x 33.5cm
Acc. 1:0491
Purchased 1951

LE BAS, EDWARD
England 1904–66
Brighton from Clifton Terrace 1952–53
Oil on canvas
66.5 x 65cm
Acc. 1:0862

Gift of Sir James (Robert) McGregor, KBE, 1961

LISTER, W LISTER
Australia 1859–1943
Sydney Harbour, overlooking Taylors Bay c.1912
Oil on canvas
183.2 x 230cm
Acc. 1:0452
Purchased 1949

NICHOLAS, ATHOL
Australia
Mixed bunch c.1946
Oil on card
50.8 x 55.6cm
Acc. 1:0405
Purchased 1946

PARKER, HAROLD
Australia 1873–1962
Portrait of Jane Parker (mother of the artist) 1932
Watercolour
49.6 x 34.4cm (sight)
Acc. 1989.126

Self portrait 1934
Oil on canvas on cardboard
50 x 35cm
Acc. 1989.128
Gift of Mrs Margaret Henty 1989

PENDLEBURY, SCOTT
Australia 1914–86
The storm 1955
Oil on canvas laid down on composition board
69.5 x 90.8cm
Acc. 1:0828
Purchased 1960

PLAZZOTTA, ENZO
Italy/England 1921–81
Sibley in repose 1972
Bronze on polished metal base, ed. 5/9
39.5 x 12 x 11cm (with base)
Acc. 1:1292

Charlene 1971
Bronze on polished metal base, ed. 5/9
33.8 x 22.5 x 13cm (with base)
Acc. 1:1293

Four Seasons 1971
Bronze, ed. 1/9
42.5 x 75 x 39.5cm
Acc. 1:1294

Reflection 1972
Bronze with steel mirror on polished metal base, ed. 2/9
41.3 x 30.5 x 26.5cm (with base)
Acc. 1:1295

Anthony Dowell II 1972
Bronze, ed. 6/9
85.5 x 37 x 22.5cm (with base)
Acc. 1:1296

Swan landing 1970
Bronze, ed. 6/9
39.5 x 101.5 x 63.5cm
Acc. 1:1298
Purchased 1973

Lolita c.1975
Bronze on polished metal base, ed. 6/9
42.5 x 25 x 23.5cm (with base)
Acc. 1:1477
Gift of Grace Davies and Nell Davies 1976

Portrait bust of Sir Leon Trout 1979
Bronze on polished metal base, ed. 1/2
45 x 25.6 x 25cm (with base)
Acc. 1:1684
Gift of Lady Trout 1979

QUINN, JAMES
Australia/France 1871–1951
Lady in a black dress 1929
Oil on canvas
104.5 x 69.5cm
Acc. 1:1374
Purchased 1975

RAPOTEC, STANISLAUS
Yugoslavia/Australia 1913–97
Exploding form 1966
Oil on composition board
121.8 x 137.3cm
Acc. 1:1242
Purchased 1972

ROWELL, KENNETH
Australia 1922–99
Desert monument 1959
Synthetic polymer paint with pastel and enamel and sawdust on paper
42 x 27.1cm (irreg.)
Acc. 1:1120
Gift of Ann Gruen in memory of her mother, Margaret Darvall 1970

SANTRY, JOHN
Australia 1910–90
Ann c.1950
Oil on canvas on plywood
41.3 x 41.6cm
Acc. 1:0506
Purchased 1951

Play street 1954
Oil and ink on hardboard
61 x 91.4 cm
Acc. 1:0674
Purchased 1955

TIBET
Footed bowl 19th century
Silver in two sections raised and engraved over a cork body
5 x 11.3cm (diam.)
Acc. 4:1379
Bequest of Dr Ernest Singer 1975

WILSON, ERIC
Australia 1911–46
Bridge over Seine (Paris) 1941
Oil on cardboard
47.5 x 37.5cm (comp.)
Acc. 1:1730
Purchased 1980

EXHIBITIONS SCHEDULE AND SPONSORS

EXHIBITIONS PRESENTED AT THE GALLERY

NO ORDINARY PLACE: THE ART OF DAVID MALANGI
23 April – 17 July 2005

A National Gallery of Australia Travelling Exhibition
Principal Sponsor: Newmont, The Gold Company
A proud partner of Reconciliation Australia
Visions of Australia
Northern Territory Government
in association with Bula'bula Arts, Ramingining
Channel 7
Australian Air Express

I AM MAKING ART**25 June – 25 September 2005****LEE UFAN EXHIBITION****25 June – 6 November 2005****BLACK INK: INDIGENOUS PRINTS FROM THE QUEENSLAND ART GALLERY COLLECTION****9 July – 20 November 2005****PRESS PAUSE: AUSTRALIAN VIDEO INSTALLATIONS****9 July – 9 October 2005****SPARSE SHADOWS, FLYING PEARLS: A JAPANESE SCREEN REVEALED****27 August – 27 November 2005****BARBARA HEATH: JEWELLER TO THE LOST****15 October 2005 – 26 March 2006****KISS OF THE BEAST****16 November 2005 – 22 January 2006****MADE FOR THIS WORLD: CONTEMPORARY ART AND THE PLACES WE BUILD****26 November 2005 – 19 February 2006**

A Queensland Art Gallery Children's Art Centre Exhibition
Sponsored by Commonwealth Bank
Media Sponsor QUEST

EXPOSURE: AUSTRALIAN PHOTOGRAPHY FROM THE 1930S TO THE 1950S**3 December 2005 – 2 July 2006****GRACE COSSINGTON SMITH: A RETROSPECTIVE EXHIBITION****18 February – 1 May 2006**

A National Gallery of Australia Travelling Exhibition
Proudly sponsored by MARSH and Australian Air Express

MARGARET PRESTON: ART AND LIFE**18 February – 1 May 2006**

Organised by the Art Gallery of New South Wales
Major Exhibition Program Sponsor: Art Gallery of New South Wales President's Council
National Touring Partner Visions of Australia
Media Partner Australian Women's Weekly

FOCUS/THEMATIC DISPLAYS PRESENTED AT THE GALLERY

'NEW' PAINTING FROM THE CONTEMPORARY AUSTRALIAN COLLECTION**April – 2 October 2005****LUMINOUS: WATERCOLOUR LANDSCAPES OF THE FEDERATION ERA****11 April – 2 October 2005****NEW ACQUISITIONS: INDIGENOUS AUSTRALIAN ART****June 2005 – March 2006**

EXHIBITIONS PRESENTED IN REGIONAL QUEENSLAND

STREETON: WORKS FROM THE QUEENSLAND ART GALLERY COLLECTION**8 April 2005 – 4 July 2006**

A Queensland Art Gallery Travelling Exhibition
Outback Regional Gallery, Winton
8 April – 12 May 2005
Qantas Founders Outback Museum, Longreach
28 May – 10 July 2005
Gladstone Regional Art Gallery and Museum
16 July – 24 September 2005
Noosa Regional Gallery
22 October – 27 November 2005
Hervey Bay Regional Gallery
7 December 2005 – 21 January 2006
Dogwood Crossing Art Gallery, Miles
11 February – 26 March 2006
Toowoomba Regional Art Gallery
31 March – 21 May 2006
Stanthorpe Art Gallery
26 May – 4 July 2006

QUEENSLAND LIVE: CONTEMPORARY ART ON TOUR**22 February 2006 – 7 October 2007**

A Queensland Art Gallery Travelling Exhibition
Gladstone Regional Art Gallery and Museum
22 February – 25 April 2006
Logan Art Gallery
23 May – 8 July 2006
Bundaberg Arts Centre
19 July – 3 September 2006
Kick Arts, Cairns
13 September – 19 November 2006
Ipswich Art Gallery
2 December 2006 – 11 February 2007
Redland Art Gallery, Cleveland
25 February – 15 April 2007
Artspace, Mackay
4 May – 8 July 2007
Toowoomba Regional Art Gallery
23 August – 7 October 2007

EXHIBITIONS PRESENTED INTERSTATE

THE ART OF FIONA HALL**8 July – 11 September 2005**

A Queensland Art Gallery Travelling Exhibition
Art Gallery of South Australia

PUBLICATIONS

PUBLISHED BY THE GALLERY

ARTLINES.

Issue 2-2005 – issue 1-2006. (48–52pp., illus: col.).

Staff contributions:

Arden, Holly. 'Grant Stevens: Then I let you'. (2-2005, pp.38–39)
Burnett, David. 'Almodóvar's *Bad Education*'. (2-2005, p.45)
Burnett, David. '*The Proposition*'. (1-2006, p.49)
Butt, Zoe. 'The feather arts of Hawai'i'. (1-2006, p.42)
Butt, Zoe. '*The Chinese: Contemporary Photography and Video from China*'. (2-2005, p.43)
Chambers, Nicholas. 'Candice Breitz: Mother + father'. (2-2005, pp.12–15)
Chambers, Nicholas. 'Olafur Eliasson's constructed worlds'. (3-2005, pp.12–15)
Clark, Andrew and Seear, Lynne. 'Contemporary art for contemporary kids'. (3-2005, pp.16–23)
Cooke, Glenn R. 'Leonard Shillam, AM, 1915–2005'. (3-2005, p.47)
Cull, Tamsin and Heron, Don. 'Artists collaborating with kids'. (3-2005, pp.28–33)
Dezuanni, Rebecca. 'Beck's *Guero*: Any which way you like it'. (2-2005, p.44)
Dezuanni, Rebecca. '*Hero*: The art of Christopher Doyle'. (2-2005, pp.34–37)
Dezuanni, Rebecca. 'Julius Sherman'. (1-2006, p.45)
Dezuanni, Rebecca. '*PS*: New beginnings'. (3-2005, p.44)
Dezuanni, Rebecca. 'Vale: Robert Haines 1910–2005'. (3-2005, p.46)
Fitzgibbons, Abby. 'Reprise: *Mono Lake California*'. (2-2005, p.44)
Gobé, Claire. '*Degenerates and Perverts: The 1939 Herald Exhibition of French and British Contemporary Art*'. (3-2005, p.43)
Kirker, Anne. '*LA Artland: Contemporary Art from Los Angeles*'. (1-2006, p.47)
Kirker, Anne. '*Shanghai Modern 1919–1945*'. (3-2005, p.43)
McColm, Donna and Ryan, Kate. 'Made for this World'. (3-2005, pp.38–39)
McDougall, Ruth. 'Pacific weave'. (1-2006, p.40–41)
Mallos, Melina and Ravenswood, Kate. 'Explore, discover, interact: Let's play'. (3-2005, pp.24–27)
O'Reilly, Rachel. 'World Without End'. (2-2005, p.41)
Page, Maud and Seear, Lynne. 'A wider Pacific: Collecting art in the region'. (1-2006, pp.30–37)
Timmins, Kylie. '*Banksy: Wall and Piece*'. (1-2006, p.46)
Timmins, Kylie. '*Cyberarts 2004*'. (2-2005, p.43)
Weir, Kathryn. 'Space, time and chaos: Aernout Mik's *Pulverous*'. (2-2005, pp.30–33)

Were, Ian. 'John Pule: Life is worthless if we forget'. (1-2006, pp.12–15)

Were, Ian. 'John Pule: Life is worthless if we forget'. (1-2006, pp.12–15)

Were, Ian. 'John Pule: Life is worthless if we forget'. (1-2006, pp.12–15)

Were, Ian. 'John Pule: Life is worthless if we forget'. (1-2006, pp.12–15)

Were, Ian. 'John Pule: Life is worthless if we forget'. (1-2006, pp.12–15)

Were, Ian. 'John Pule: Life is worthless if we forget'. (1-2006, pp.12–15)

Were, Ian. 'John Pule: Life is worthless if we forget'. (1-2006, pp.12–15)

Were, Ian. 'John Pule: Life is worthless if we forget'. (1-2006, pp.12–15)

Were, Ian. 'John Pule: Life is worthless if we forget'. (1-2006, pp.12–15)

Were, Ian. 'John Pule: Life is worthless if we forget'. (1-2006, pp.12–15)

Were, Ian. 'John Pule: Life is worthless if we forget'. (1-2006, pp.12–15)

Were, Ian. 'John Pule: Life is worthless if we forget'. (1-2006, pp.12–15)

Were, Ian. 'John Pule: Life is worthless if we forget'. (1-2006, pp.12–15)

Were, Ian. 'John Pule: Life is worthless if we forget'. (1-2006, pp.12–15)

Were, Ian. 'John Pule: Life is worthless if we forget'. (1-2006, pp.12–15)

Were, Ian. 'John Pule: Life is worthless if we forget'. (1-2006, pp.12–15)

Were, Ian. 'John Pule: Life is worthless if we forget'. (1-2006, pp.12–15)

Were, Ian. 'John Pule: Life is worthless if we forget'. (1-2006, pp.12–15)

Were, Ian. 'John Pule: Life is worthless if we forget'. (1-2006, pp.12–15)

Were, Ian. 'John Pule: Life is worthless if we forget'. (1-2006, pp.12–15)

Were, Ian. 'John Pule: Life is worthless if we forget'. (1-2006, pp.12–15)

Were, Ian. 'John Pule: Life is worthless if we forget'. (1-2006, pp.12–15)

Were, Ian. 'John Pule: Life is worthless if we forget'. (1-2006, pp.12–15)

Were, Ian. 'John Pule: Life is worthless if we forget'. (1-2006, pp.12–15)

Were, Ian. 'John Pule: Life is worthless if we forget'. (1-2006, pp.12–15)

Were, Ian. 'John Pule: Life is worthless if we forget'. (1-2006, pp.12–15)

Were, Ian. 'John Pule: Life is worthless if we forget'. (1-2006, pp.12–15)

Were, Ian. 'John Pule: Life is worthless if we forget'. (1-2006, pp.12–15)

Were, Ian. 'John Pule: Life is worthless if we forget'. (1-2006, pp.12–15)

Were, Ian. 'John Pule: Life is worthless if we forget'. (1-2006, pp.12–15)

Were, Ian. 'John Pule: Life is worthless if we forget'. (1-2006, pp.12–15)

Were, Ian. 'John Pule: Life is worthless if we forget'. (1-2006, pp.12–15)

Were, Ian. 'John Pule: Life is worthless if we forget'. (1-2006, pp.12–15)

Were, Ian. 'John Pule: Life is worthless if we forget'. (1-2006, pp.12–15)

Were, Ian. 'John Pule: Life is worthless if we forget'. (1-2006, pp.12–15)

Were, Ian. 'John Pule: Life is worthless if we forget'. (1-2006, pp.12–15)

Were, Ian. 'John Pule: Life is worthless if we forget'. (1-2006, pp.12–15)

Were, Ian. 'John Pule: Life is worthless if we forget'. (1-2006, pp.12–15)

Were, Ian. 'John Pule: Life is worthless if we forget'. (1-2006, pp.12–15)

Were, Ian. 'John Pule: Life is worthless if we forget'. (1-2006, pp.12–15)

Were, Ian. 'John Pule: Life is worthless if we forget'. (1-2006, pp.12–15)

Were, Ian. 'John Pule: Life is worthless if we forget'. (1-2006, pp.12–15)

Were, Ian. 'John Pule: Life is worthless if we forget'. (1-2006, pp.12–15)

Were, Ian. 'John Pule: Life is worthless if we forget'. (1-2006, pp.12–15)

Were, Ian. 'John Pule: Life is worthless if we forget'. (1-2006, pp.12–15)

Were, Ian. 'John Pule: Life is worthless if we forget'. (1-2006, pp.12–15)

Were, Ian. 'John Pule: Life is worthless if we forget'. (1-2006, pp.12–15)

Were, Ian. 'John Pule: Life is worthless if we forget'. (1-2006, pp.12–15)

Were, Ian. 'John Pule: Life is worthless if we forget'. (1-2006, pp.12–15)

Were, Ian. 'John Pule: Life is worthless if we forget'. (1-2006, pp.12–15)

Were, Ian. 'John Pule: Life is worthless if we forget'. (1-2006, pp.12–15)

Were, Ian. 'John Pule: Life is worthless if we forget'. (1-2006, pp.12–15)

Were, Ian. 'John Pule: Life is worthless if we forget'. (1-2006, pp.12–15)

CONTRIBUTIONS TO EXTERNAL PUBLICATIONS

Butt, Zoe. 'Gifts of the artists: Contemporary Asian art at the Queensland Art Gallery'. *TAASA Review*, vol.14, no.4, December 2005, pp.18–19.

Butt, Zoe. *Wang Qingsong* [exhibition catalogue]. Albion Gallery, London, 2006.

Butt, Zoe and Dean, Bec. *Mirror Worlds: Contemporary Video from Asia* [exhibition catalogue]. Australian Centre for Photography, Sydney, May 2005.

Butt, Zoe and Dean, Bec. *Mirror Worlds: Contemporary Video from Asia* [exhibition catalogue]. Institute of Modern Art, Brisbane, March 2006.

Carter, Anne. 'Donors and saints: An examination of a panel by the Master of Frankfurt'. *Melbourne Journal of Technical Studies in Art*, vol.2: Underdrawing, pp.55–68.

Carter, Anne. 'Donors and saints: A re-ordering of Ian Burn's *Re-ordered painting 1965*'. *Melbourne Journal of Technical Studies in Art*, vol.2: Underdrawing, pp.77–83.

Hall, Doug. *Gordon Shepherdson* [exhibition catalogue]. Philip Bacon Galleries, Brisbane, 2005.

Kirker, Anne. 'Bill Viola: The passions (National Gallery of Australia) [review]'. *Eyeline*, no.59, 2006, p.59.

Kirker, Anne. 'Colors: Viktor & Rolf and KCI (Mori Art Museum, Tokyo) [review]'. *Object*, no.47, 2005, pp.44–45.

Kirker, Anne. 'David Stephenson: Visions of heaven — The dome in European architecture'. *Photofile*, no.77, Autumn 2006, p.78.

Kirker, Anne. 'Drifting: Ian Friend's encounter with Redcliffe'. *Tidal*. Redcliffe City Art Gallery, Redcliffe, 2006.

Kirker, Anne. 'Dutch masters from the Rijksmuseum (National Gallery of Victoria) [review]'. *Museums Australia Magazine*, November 2005, p.29.

Kirker, Anne. 'glass house mountains: Judy Watson and Liza Lim (Institute of Modern Art) [review]'. *Eyeline*, no.58, Spring 2005, p.53.

Kirker, Anne. 'A gracious iconoclast: Arline Fisch'. *Craft Arts International*, no.65, 2005, pp.67–71.

Kirker, Anne. 'Helen Ennis, Margaret Michaelis: Love, loss and photography (National Gallery of Australia) [review]'. *Photofile*, no.76, Summer 2006, p.78.

Kirker, Anne. 'Judy Watson: Selected works 1990–2005 (University of Queensland Art Museum) [review]'. *Artlink*, vol.26, no.1, 2006, p.91.

Kirker, Anne. 'Over my dead body: Mona Hatoum (Museum of Contemporary Art) [review]'. *Eyeline*, no.57, Winter 2005, p.51.

Kirker, Anne. 'Transformations: The language of craft (National Gallery of Australia) [review]'. *Object*, no.49, 2006, p.47.

Littley, Samantha. 'A question of influence: The linocuts of Ethleen Palmer', *World of Antiques and Art*, issue 69, August 2005 – February 2006, pp.52–56.

Littley, Samantha. *Sebastian Moody: The prohibition of isolation* [exhibition brochure], Metro Arts, Brisbane, 2005.

Mühlberger, Emma. 'An artwork is a dot on a line: Two contemporary ephemeral artists', *Machine*, vol.1, no.4, February 2006, pp.8–9.

Mühlberger, Emma. 'Beasts of burden'. *Animals as Allegory* [exhibition catalogue]. QUT Art Museum, Brisbane, 2006, unpaginated.

O'Reilly, Rachel. 'Compasses, meetings and maps: Three recent media works'. *Leonardo*, vol.39, issue 4, August 2006, pp.335–339.

Osmond, Gillian, Keune, Katrien and Boon, Jaap. 'A study of zinc soap aggregates in a late nineteenth century painting by RG Rivers at the Queensland Art Gallery'. *AICCM Bulletin*, vol. 29 2004–05, pp.37–46.

Pagliariino, Amanda. 'Instant experience — constant challenge: Conservation of 2 electronic artworks by Nam June Paik'. *AICCM Objects Special Interest Group Symposium*. AICCM, 2005, pp.27–34.

Shellard, Samantha. 'Discoveries beyond a smokey haze — The resurrection of collage components from *The Café Balzac mural*'. *Conference Proceedings: 4th AICCM Paper, Book and Photographic Symposium*, 19–21 April 2006.

Te Papa Tongarewa Museum of New Zealand, Wellington, 2006 (forthcoming).

Timmins, Kylie. 'Explorations in the gothic'. *Machine*, vol.1, no.6, June 2006, pp.7–9.

Timmins, Kylie. 'The politics of street art'. *Machine*, vol.1, no.4, February 2006, pp.5–7.

Wild, Liz. "'Please touch the balls gently": Conservation of *Narcissus garden* by Yayoi Kusama'. *AICCM Objects Special Interest Group Symposium*, AICCM, 2005, pp.35–42.

PAPERS PRESENTED (UNPUBLISHED)

Carter, Anne. 'Cleaning *The Café Balzac mural*'. Australian Institute for the Conservation of Cultural Materials Paintings Special Interest Group 10th Symposium, Brisbane, 4–5 May 2006.

Dudley, Andrew. 'Dotting the 'i's and Crossing the 't's — Critical Collection Documentation'. Graduate Courses in Museum Studies, University of Queensland, Brisbane, 5 May 2006.

Dudley, Andrew. 'Leaving a Trail — Documenting the Acquisition and Removal of Objects'. Graduate Courses in Museum Studies, University of Queensland, Brisbane, 5 May 2006.

Dudley, Andrew. 'What Information do I Keep and Why?' Graduate Courses in Museum Studies, University of Queensland, Brisbane, 5 May 2006.

Dudley, Andrew. 'Did you Wash your Hands? Handling Objects and Art works.' University of Queensland Graduate Courses in Museum Studies, Queensland Art Gallery, Brisbane, 12 May 2006.

Hook, John. 'Origins and Treatment of Old Master Paintings and Icons in Brisbane Collections'. AICCM Paintings Special Interest Group 10th Symposium, Brisbane, 4–5 May 2006.

Kirker, Anne. 'Collaborations between Artists and Poets'. 10th Sydney Art on Paper Fair, Sydney, 29 July 2005.

Kirker, Anne. 'Photographic Interventions: The Prints of Noda Tetsuya and Shimada Yoshiko'. Harold Wright Legacy Symposium, University of Melbourne, Melbourne, 15 November 2005.

Osmond, Gillian. 'Zinc Soap Aggregates in Paintings from the Queensland Art Gallery Collection'. Metal Soaps in Paint Layers, ICOM-CC Scientific Research Meeting, Van Gogh Museum, Amsterdam, 10 September 2005.

Pagliariino, Amanda. 'The Technical Profession of Conservation: Looking at the Detail'. Queensland University of Technology Interior Design Masters Course, Queensland Art Gallery, Brisbane, 11 May 2006.

Shellard, Samantha. 'Conservation of Contemporary Photography'. Nuts and Bolts — Current Issues in Printing, Editioning, Conserving, Collecting and Making Contemporary Photography: Museums and Galleries Services Queensland Seminar, Gold Coast City Art Gallery, Surfers Paradise, 6 May 2006.

PAPERS PRESENTED (PUBLISHED)

Carter, Anne. 'Cleaning *The Café Balzac mural*'. Poster presented and abstract published in pre prints 'Modern Paints Uncovered' Symposium, Tate Modern, London, 11–12 May 2006.

BOARD OF TRUSTEES AND EXECUTIVE MANAGEMENT TEAM

| BOARD OF TRUSTEES | TERM OF APPOINTMENT | |
|---|---------------------|-------------------|
| CHAIR Mr Wayne Goss | 24/06/02–23/06/05 | 24/06/05–02/02/08 |
| DEPUTY CHAIR Ms Ann Gamble Myer | 24/06/02–23/06/05 | 24/06/05–02/02/08 |
| MEMBERS | | |
| Mr Tim Fairfax, AM | 24/06/02–23/06/05 | 24/06/05–02/02/08 |
| Mr Mark Gray | 24/06/02–23/06/05 | 24/06/05–02/02/08 |
| Ms Katrina McGill | 24/06/02–23/06/05 | 24/06/05–02/02/08 |
| Ms Sue Purdon | 31/01/02–30/01/05 | 03/02/05–02/02/08 |
| Mr Brian Robinson | 24/06/02–23/06/05 | 24/06/05–02/02/08 |
| Ms Maureen Hansen | 12/06/03–11/06/06 | 12/06/06–02/02/08 |
| Mr Craig Koomeeta | 03/02/05–02/02/08 | |
| Professor Michael Wesley | 23/06/05–02/02/08 | |

(Section 6 (1) of the *Queensland Art Gallery Act 1987* provides for the Board to consist of the number of members appointed by the Governor in Council)

EXECUTIVE MANAGEMENT TEAM

The Executive Management Team provides strategic direction and manages the Gallery's operations and programs.

DIRECTOR

Mr Doug Hall, AM

ASSISTANT DIRECTOR, CURATORIAL & COLLECTION DEVELOPMENT

Ms Lynne Seear

ASSISTANT DIRECTOR, MANAGEMENT & OPERATIONS

Mr Alan Wilson

ASSISTANT DIRECTOR, PUBLIC PROGRAMS

Mr Andrew Clark

STAFF PROFILE

| Staff profile as of 30 June 2006 | Permanent | Temporary | Casual |
|--|------------|-----------|-----------|
| DIRECTORATE | | | |
| Directorate | 2 | | |
| Building & Development | 1 | 1 | 2 |
| Foundation & Membership | 3 | 3 | |
| CURATORIAL & COLLECTION DEVELOPMENT | | | |
| Executive Management | 1 | | |
| Curatorial | 10 | 15 | |
| Conservation | 10 | 3 | |
| Registration | 5 | 5 | |
| Information and Publishing Services | 11 | 4 | 2 |
| PUBLIC PROGRAMS | | | |
| Executive Management | 1 | | |
| Managerial Research | 1 | 4 | |
| Exhibitions & Display | 7 | 8 | 5 |
| Access, Education & Regional Services | 5 | 6 | |
| Marketing & Communications | 2 | 7 | |
| Design, Web & Multimedia | 1 | 7 | |
| MANAGEMENT & OPERATIONS | | | |
| Executive Management | 1 | | |
| Administration | 4 | | |
| Financial Services | 4 | | |
| Gallery Store | 5 | | 2 |
| Protection & Services | 38 | 2 | 5 |
| Information Technology | 4 | 2 | |
| Total | 116 | 67 | 15 |

STATISTICAL SUMMARY

| Statistical Summary | | PHOTOGRAPHIC REPRODUCTIONS AND COPYRIGHT CLEARANCES | |
|---|---------|---|------------|
| NUMBER OF BOARD OF TRUSTEES MEETINGS | 8 | External reproduction requests (193 works) | 110 |
| ATTENDANCE | | Internal reproduction requests (611 works) | 54 |
| Total Gallery attendance | 325 730 | Internal copyright clearances sought (329 works) | 56 |
| Total attendance at exhibitions in regional Queensland | 26 716 | PUBLICATIONS | |
| EXHIBITIONS AND SERVICES — REGIONAL QUEENSLAND | | Published by the Gallery | 18 |
| Total travelling exhibitions | 2 | In progress at 30 June | 5 |
| Exhibition venues | 7 | Staff contributions to external publications | 29 |
| Total exhibition attendances | 26 716 | Papers presented (unpublished) | 11 |
| Total visits by Gallery staff to regional Queensland | 115 | Papers presented (published) | 1 |
| STREETON: WORKS FROM THE QUEENSLAND ART GALLERY COLLECTION | | Websites | 2 |
| Venues 2–7 of 8 venues (11 works) | | Videos | 9 |
| Qantas Founders Outback Museum, Longreach | 4918 | WEBSITE USAGE | |
| Gladstone Regional Art Gallery and Museum | 4017 | Queensland Art Gallery * www.qag.qld.gov.au | |
| Noosa Regional Gallery | 3699 | Total hits | 14 827 779 |
| Hervey Bay Regional Gallery | 1178 | Page views | 3 821 572 |
| Dogwood Crossing Art Gallery, Miles | 2895 | User sessions | 672 118 |
| Toowoomba Regional Art Gallery | 7199 | VOLUNTEERS | |
| Total attendance venues 2–7 | 23 906 | Curatorial volunteers | 3 |
| QUEENSLAND LIVE: CONTEMPORARY ART ON TOUR | | Information Officer volunteers | 23 |
| First of 8 venues (22 works) | | Library volunteers | 7 |
| Gladstone Regional Art Gallery and Museum | 2810 | Children's program volunteers | 1 |
| ACQUISITIONS | | Survey volunteers | 4 |
| Asian art | 2 | Volunteer Guides | 84 |
| Australian art | 52 | | |
| Contemporary Asian and Pacific art | 125 | | |
| Contemporary Australian art | 84 | | |
| Indigenous Australian art | 60 | | |
| International art | 15 | | |
| Total | 338 | | |
| Acquired through Foundation | 190 | | |
| EDUCATION — ACCESS | | | |
| Students participating in booked tours (guided and unguided) | 30 126 | | |
| Education clients receiving educational material | 8404 | | |
| Children's programs, exhibitions and events total attendance | 82 739 | | |
| Children's activities and workshops Total attendance | 105 | | |
| Public programs total attendance (youth, tertiary and adult) | 4203 | | |
| | 2718 | | |

* Includes the main Queensland Art Gallery website and all exhibition websites hosted within the www.qag.qld.gov.au domain, but excludes the Gallery Store website

OVERSEAS TRAVEL

Overseas travel in the 2005–06 financial year has focused on undertaking key research and Collection development for 'The 5th Asia–Pacific Triennial of Contemporary Art'. Research for Queensland Gallery of Modern Art exhibitions, programs and initiatives, including the Australian Centre of Asia–Pacific Art, Children's Art Centre and Australian Cinémathèque, has also been a focus of overseas travel.

| NAME OF OFFICER AND POSITION | DESTINATION | REASON FOR TRAVEL | AGENCY COST \$ | \$** |
|---|-------------------------------|--|----------------|----------|
| Julie Ewington Head of Australian Art Don Heron Head of Exhibitions & Display | Singapore & Malaysia | To research and meet with artists in relation to the APT5 exhibition; view works under consideration for acquisition; meet with art curators and writers in relation to APT5. | \$9285* | |
| Gillian Osmond Conservator, Paintings | The Netherlands | To attend the ICOM-CC Triennial Meeting; attend and present at the Molecular Paintings Research Group Meeting dedicated to metal soaps/protrusions research; continue conservation research of particular significance to the QAG Collection. | \$1257 | |
| Lynne Seear Assistant Director, Curatorial & Collection Development Sarah Tiffin Curator, Historical Asian Art | China & Japan | To undertake curatorial selection and research on APT5 artists; attend the Third Fukuoka Asian Art Triennial 2005 and the Yokohama Triennial 2005; meet with senior staff from the Shanghai Museum and the Idemitsu Museum of Arts to continue negotiations for two major loans programs. | \$25 753* | |
| Suhanya Raffel Head of Asian, Pacific & International Art | New Zealand, USA & UK | To take up a Smithsonian Fellowship to develop a major exchange program between the QAG and the Arthur M Sackler Gallery; select and secure a group of significant historical Asian art works for loan to QAG; research and develop the adoption of new technologies in the cultural industries. | \$7724 | \$14 615 |
| Zoe Butt Curatorial Assistant, Contemporary Asian Art Diane Moon Curator, Indigenous Fibre Art | Fiji, Cook Islands & Hawai'i | To select art works from the Pacific for APT5 ; consult with key elders in relation to culturally significant art works for inclusion in APT5 and development of the Gallery's contemporary Pacific collection; research the Pacific Art collection at the Bishop Museum, Honolulu. | \$21 272* | |
| Julie Ewington Head of Australian Art | France | To review the major international contemporary art exhibition, 2005 Biennale de Lyon; identify art works by international artists of interest for the APT5 and QAG Collection; promote the Gallery, GoMA and APT5 to French arts professionals. | \$1614 | |
| Andrew Clark Assistant Director, Public Programs Kathryn Weir Head of Cinema | Thailand, Hong Kong & Vietnam | To research artists and film-makers in relation to APT5 and the QAG Film and Video collection; promote the QAG Collection and programs, especially the Gallery of Modern Art's Australian Cinémathèque; conduct research for forthcoming exhibitions, projects and publications. | \$20 720* | |
| Izabella Chabrowska Retail Manager, Gallery Store | Japan | To attend the Tokyo Product Trade Fair and visit contemporary art museums and commercial art and design stores; source new products and suppliers of art merchandise; establish international outlets for the sale of QAG publications and merchandise. | \$4152 | |
| Samantha Shellard Conservator, Works on Paper | New Zealand | To attend the AICCM/New Zealand Paper Conservation Group Symposium on the Conservation of Paper, Books and Photographic Materials; present a paper on a current restoration project; promote the Gallery's conservation research and the opening program of GoMA at an international forum. | \$1497 | |
| Lynne Seear Assistant Director, Curatorial & Collection Development Don Heron Head of Exhibitions & Display | Korea, China & Singapore | To research artists and art works for consideration in APT5; progress negotiations with the National Museum of Korea regarding a long-term loans program of historical Asian art works; present on the programs of GoMA's Children's Art Centre at the National Museum of Korea's Children's Museum. | \$12 415* | \$11 066 |
| Kathryn Weir Head of Cinema | New Caledonia | To research artists and art works, film-makers and films for inclusion in APT5; present on QAG, GoMA and Australian Cinémathèque programs at the Nouméa Cultural Centre and Médiathèque; meet with staff at key contemporary art and film institutions. | \$2286 | \$748 |
| Glenn Cooke Research Curator, Queensland Heritage | USA | To photograph and document items by LJ Harvey donated to the QAG Collection; strengthen the Gallery's relationship with significant donors David and Bruce Noble; record the history of the donated art works as told by the artist's family. | \$4926 | |
| Linda Mehan Head of Retail & Commercial Services | UK | To attend the <i>Pulse</i> Product Trade Fair and visit a range of art museums, commercial galleries and design stores; source new products and suppliers of art merchandise for the new GoMA store; establish contacts for the marketing of QAG products. | \$5983 | |

** Contribution from other Agencies or Sources \$

* This amount represents travel costs for two officers.

CORPORATE GOVERNANCE

ETHICS AND CODE OF CONDUCT

The Gallery's Code of Conduct is based on the ethics, principles and obligations outlined in the *Public Sector Ethics Act 1994* and was developed following consultation with all staff.

New employees receive the Code of Conduct as part of their commencement kit and the Code is available to all staff on the Gallery's intranet. The Code applies to all paid employees as well as volunteers.

Persons other than staff members can inspect the Code, free of charge, upon request at the Gallery's Research Library, with extracts or a full copy available free of charge.

During the year, workshops for new supervisory staff included reference to the Code.

EQUAL EMPLOYMENT OPPORTUNITY

Strategies to achieve the objectives contained in the Gallery's Equal Employment Opportunity (EEO) Management Plan 2005–07 continued to be implemented and monitored against target dates during the year.

Key strategies included:

- + conducting career planning sessions
- + continuing the Indigenous traineeship program
- + continuing online anti-discrimination training and certification for new supervisors and managers
- + ensuring access to human resource policies through the intranet and providing printed copies in the Gallery's Research Library.

HUMAN RESOURCE ISSUES

The Gallery:

- + continued its Change Management Program for staff in preparation for the Gallery's transition to a two-site organisation
- + continued the recruitment of additional staff to undertake planning and program/services preparation for the Gallery of Modern Art
- + continued the traineeship program
- + continued online anti-discrimination training for supervisors
- + provided a range of staff training and professional development
- + conducted workshops for new supervisory staff.

Due to the size of the Queensland Art Gallery, a separate risk management committee has not been established. However, the Gallery's Executive Management Team, comprising the Director and three Assistant Directors, is responsible for the implementation and monitoring of the Gallery's risk management process.

Risk control measures were reviewed during the year.

Gallery representatives participated in the Government's Asset Protection Program.

AUDIT COMMITTEE

The Board of Trustees Audit Committee, consisting of Mr Tim Fairfax, AM, Mr Wayne Goss, Ms Ann Gamble Myer (Trustees) and Mr Doug Hall, AM (Director), met on one occasion.

RECORDKEEPING

The Gallery's recordkeeping practices are currently under review to ensure compliance with the *Public Records Act 2002* and *Information Standard 40* (IS40). The Queensland State Archives (QSA) Recordkeeping Practices Survey has been completed and a Strategic Records Implementation Plan will be developed, assessed by QSA and implemented by the end of 2007, as per the requirements of IS40.

The Gallery has indicated its willingness to be involved in the pilot project for the introduction of an Electronic Document and Records Management System (eDRMS), which will be conducted by the Corporate Administration Agency in the forthcoming financial year.

WORKPLACE HEALTH AND SAFETY

The Gallery has a Workplace Health and Safety Committee consisting of workplace health and safety representatives elected by staff, five Workplace Health and Safety Officers, the Assistant Director (Management and Operations), and the Head of Exhibitions and Display. The Committee met on six occasions during the year and:

- + facilitated training of representatives in health and safety issues
- + monitored online training for all staff
- + conducted regular inspections of work areas
- + responded to all reported/identified hazards.

The Gallery is also represented on the Queensland Cultural Centre's Workplace Health and Safety Committee which met on six occasions.

WHISTLEBLOWERS PROTECTION ACT

There were no disclosures received over the reporting period.

CONSULTANCIES

During 2005–06, the Gallery used the services of consultants to carry out specific tasks where their expertise was required:

| Category | \$ |
|--------------------------|-----------------|
| Management | – |
| Professional — Technical | \$92 699 |
| TOTAL | \$92 699 |

BOARD OF TRUSTEES COSTS

In 2005–06, meeting fees and travel costs of Board members totalled \$30 563.

VOLUNTARY EARLY RETIREMENT (VER)

During 2005–06, one VER package of \$79 311 was taken.

MAJOR INVESTMENTS AND BORROWINGS

There were no major investments or borrowings during the year.

FINANCIAL AND OPERATIONAL PERFORMANCE SYSTEMS

The Gallery's financial systems and their uses are as follows:

- + Finance 1 and Great Plains's eEnterprise are used primarily for processing financial data and obtaining reports.
- + Whole-of-government financial information is reported using the Queensland Government's Tridata system.
- + The Gallery Store uses Booknet as its point-of-sale system.

Reports on operational performance against declared goals, strategies and benchmarks are prepared and presented at each meeting of the Board of Trustees. Quarterly, non-financial performance reports measured against declared targets are submitted to Arts Queensland and Queensland Treasury.

ENTITIES CONTROLLED

The Queensland Art Gallery Foundation was established in 1979 by the Queensland Art Gallery Board of Trustees to raise corporate and private funding to support the growth of the art collection and exhibition programs. The Gallery provides all the infrastructure support and meets all operational costs of the Foundation. For the purposes of the *Financial Administration and Audit Act 1977*, the Foundation is an entity controlled by the Queensland Art Gallery Board of Trustees.

Financial reports are prepared by the Gallery for submission to the Foundation's Council. The Foundation produces its own annual report and its books and accounts were audited by the Queensland Audit Office.