

YAYOI KUSAMA

LIFE IS THE HEART
OF A RAINBOW

GALLERY OF MODERN ART
4 NOV 2017 — 11 FEB 2018

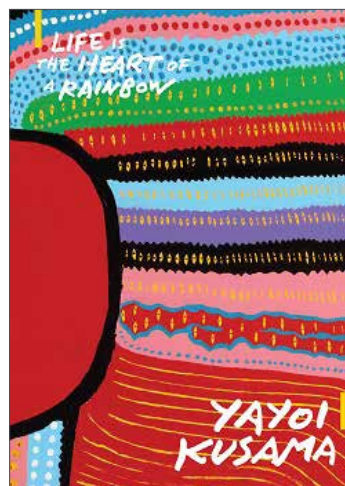


Library Guide

The 'Yayoi Kusama: Life is the Heart of a Rainbow' exhibition is a focused survey of Kusama's work. This guide provides you with selected key resources about the exhibition themes. Please visit the QAGOMA Research Library and use the call numbers listed to locate books on the shelves.

The QAGOMA Research Library is located at the Gallery of Modern Art on Level 3.
Opening hours:
10.00am – 5.00pm, Tuesday–Friday
Closed Mondays, weekends and public holidays
T: +61 (0)7 3842 9557
E: library@qagoma.qld.gov.au
Search the [online Library catalogue](#)

EXHIBITION CATALOGUE



Storer, Russell (ed.).
*Yayoi Kusama:
Life is the Heart
of a Rainbow*,
National Gallery
of Singapore,
Singapore, 2017.
QAG ExCat 2017.17

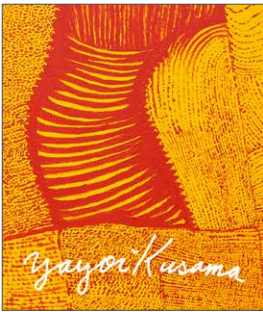
Check out the [interactive](#) created in 2011 for the Gallery's exhibition 'Look Now, See Forever', which includes essays by exhibition curator Reuben Keehan, Bree Richards (former Assistant Curator of Contemporary Australian Art) and Mami Kataoka (Chief Curator, Mori Art Museum, Tokyo).

YAYOI KUSAMA

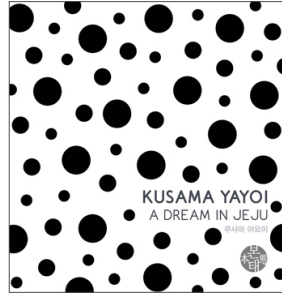
LIFE IS THE HEART OF A RAINBOW

Library Guide

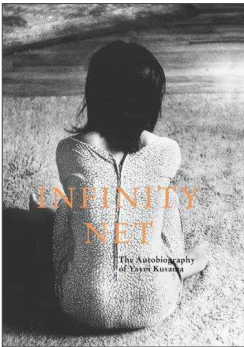
COMPREHENSIVE



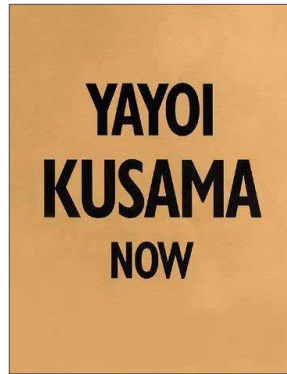
Coomer, Martin. *Yayoi Kusama*. Victoria Miro, London, 2016.
APT JAP KUS 2016



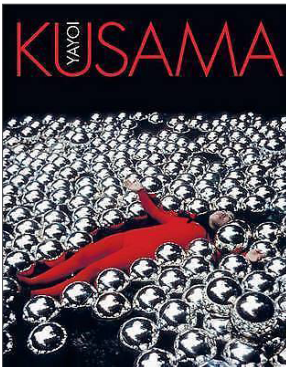
Yayoi Kusama: A dream in Jeju. Bonte Museum, Jeju Island, Korea, 2014.
APT JAP KUS 2014



Kusama, Yayoi. *Infinity Net: The Autobiography of Yayoi Kusama*. Tate Publishing, London, 2011.
APT JAP KUS 2011



Hirst, Damien (Interviewer). 'Damien Hirst interviews Yayoi Kusama'. In *Yayoi Kusama: Now*, Robert Miller Gallery, New York, 1998.
APT JAP KUS 1998



Morris, Frances (ed.). *Yayoi Kusama*. DAP, New York & Tate Publishing, London, 2012.
APT JAP KUS 2012

'NET' PAINTINGS & INFINITY ROOMS

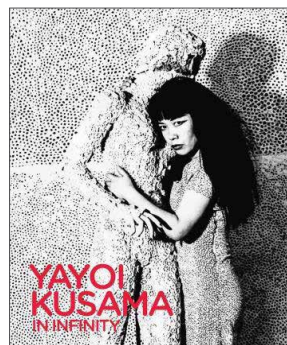


Hoptman, Laura. 'Infinity nets'. In *Yayoi Kusama*, edited by Louise Neri & Takaya Goto. Rizzoli, New York, 2012, pp 62–107.
APT JAP KUS 2012

SCULPTURES, INSTALLATIONS & OBLITERATIONS



Camh, Leslie. 'Large sculpture'. In *Yayoi Kusama*, edited by Louise Neri & Takaya Goto. Rizzoli, New York, 2012, pp 214–39.
APT JAP KUS 2012



Yayoi Kusama in Infinity, edited by Laerke Rydal Jorgensen, Louisiana Museum of Modern Art, Humlebaek, Denmark, 2015.
APT JAP KUS 2015

YAYOI KUSAMA

LIFE IS THE HEART OF A RAINBOW

Library Guide

'NET' PAINTINGS & INFINITY ROOMS (CONTINUED)



'Infinity mirrored room—the souls of millions of light years away, 2013'. In *Yayoi Kusama: I Who Have Arrived in Heaven*, David Zwirner, New York, 2014.
APT JAP KUS 2014

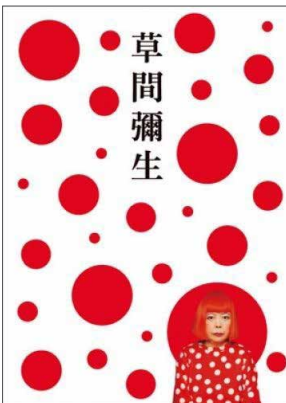


Goldberg, RoseLee. 'Performances'. In *Yayoi Kusama*, edited by Louise Neri & Takaya Goto. Rizzoli, New York, 2012, pp 152–85.
APT JAP KUS 2012

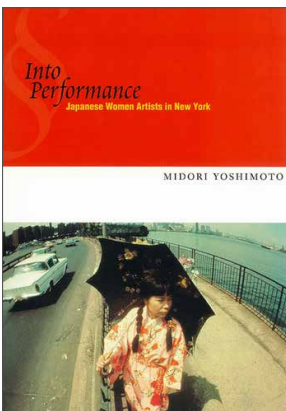
'MY ETERNAL SOUL' SERIES



'Road to eternity, 2013'. In *Yayoi Kusama: I Who Have Arrived in Heaven*, David Zwirner, New York, 2014.
APT JAP KUS 2014



Yasugi, M., Maryama, Y. & Shubutami, A. (eds.). *Yayoi Kusama: Eternity of Eternal Eternity*. Asahi Shinbunsha, Tokyo, 2012.
APT JAP KUS 2012



'Performing the self: Yayoi Kusama and her ever-expanding universe'. In *Into Performance: Japanese Women Artists in New York*, edited by Midori Yoshitomo. Rutgers University Press, New Brunswick, NJ, 2005, pp. 45–77.
APT JAP YOS 2005

SHARE YOUR EXPERIENCE

@qagoma | #KusamaGOMA



HOTEL PARTNER

[THE JOHNSON]
Art Series Hotel Group

TOURISM & MEDIA PARTNERS

brisbane
australia's new world city

JCDecaux

hit
105

SUPPORTED BY

Australian Government
Department of Communications and the Arts

WINE & SPARKLING PARTNER

YERING
Station

EXHIBITION ORGANISED BY

NATIONAL GALLERY SINGAPORE

QAGOMA

Queensland
Government

Funding for insurance has been provided through the Queensland Government Exhibition Indemnification Scheme